

National Pollutant Discharge Elimination System/State Disposal System

MN0052141

Permittee: United States Air Force Reserve
Facility name: U.S. Air Force Reserve/934th Airlift Wing
Receiving water: Mississippi River - Class 2Bg, 3, 4A, 4B, 5, 6 water; Unnamed stream - Class 2Bg, 3, 4A, 4B, 5, 6 water; Minnesota River - Class 2Bg, 3, 4A, 4B, 5, 6 water
City or Township: Minneapolis **County:** Hennepin
Issuance date: TBD
Expiration date: TBD

The state of Minnesota, on behalf of its citizens through the Minnesota Pollution Control Agency (MPCA), authorizes the Permittee to operate a disposal system at the facility named above and to discharge from this facility to the receiving water named above, in accordance with the requirements of this permit.

The goal of this permit is to reduce pollutant levels in point source discharges and protect water quality in accordance with the U.S. Clean Water Act, Minnesota statutes and rules, and federal laws and regulations.

This permit is effective on the issuance date identified above. This permit expires at midnight on the expiration date identified above.

Signature:

This document has been electronically signed.

for the Minnesota Pollution Control Agency

Brandon Montgomery
Supervisor
Water Section
Industrial Division

Resources

Submit electronic Discharge Monitoring Reports (eDMR) via the MPCA e-Services at:

https://rsp.pca.state.mn.us/TEMPO_RSP/Orchestrate.do?initiate=true

Submit documents electronically to wq.submittals.mPCA@state.mn.us. **Note:** The Water quality submittals form located at <https://www.pca.state.mn.us/sites/default/files/wq-wwprm7-71.docx> must be attached.

For eDMR and other permit reporting issues, use the directory listed at the bottom of the Discharge Monitoring Report page: <https://www.pca.state.mn.us/water/discharge-monitoring-reports>

For specific permit requirements, contact your compliance staff:

<https://www.pca.state.mn.us/water/wastewater-compliance-and-enforcement-staff-contacts>

For wastewater permit program general questions, contact the MPCA at 651-282-6143 or 800-657-3938, or reference the permit user's manual at <https://www.pca.state.mn.us/sites/default/files/wq-wwtp7-09.pdf>.

Additional guidance and resources are located at: <https://www.pca.state.mn.us/water/wastewater>.

A printable summary of sampling requirements can be found at:

<https://www.pca.state.mn.us/water/wastewater-permit-submittal-checklists>.

A printable checklist of submittals can be found at:

<https://www.pca.state.mn.us/water/wastewater-permit-submittal-checklists>

Table of Contents

	Page
1. Permitted facility description.....	4
2. Location map of permitted facility.....	6
3. Monitoring locations	7
4. Summary of stations and station locations	8
5. Permit requirements	9
6. Submittal action summary.....	40
7. Limits and monitoring.....	42
8. Chemical additives	85

DRAFT

1. Permitted facility description

The U.S. Air Force Reserve/934th Airlift Wing facility (facility) is located at 760 Military Highway Bldg 744, Minneapolis, Minnesota 55450, Hennepin County.

The main base of the facility (Base Area N) is located adjacent to the north of the Minneapolis-St. Paul International Airport (MSP). The facility also includes a small triangular area to the southeast (Base Area D) which houses the US Air Force JP-8 tanks. The principal activity at this facility is the storage, maintenance, and operation of military aircraft by the United States Air Force Reserve's 934th Airlift Wing. The facility consists of several service buildings, aircraft parking/aircraft deicing apron, and two above-ground storage tanks for fuel with accompanying secondary containment basins.

The waste streams authorized by this permit include the discharges of stormwater as further described herein. As these are stormwater related discharges dependent on precipitation, they occur intermittently. Discharge flow volume for station SD 001 averages 53,000 gallons per day (gpd); station SD 002 discharge flow volume averages 8,000 gpd; station SD 003 discharge flow volume averages 1,600 gpd; and station SD 004 discharge flow volume averages 4,600 gpd. Station SD 005 has been added to this permit to monitor stormwater discharges from the area located northeast of the aircraft parking apron and is further discussed below.

Outfall SD 001 collects stormwater from the aircraft parking apron, east-end including the designated deicing location and stormwater catch basins serving the area surrounding several aircraft maintenance buildings. Any deicing fluid which reaches the ground following plane deicing is vacuumed up by specially-equipped trucks.

When deicing operations are not occurring, stormwater will be directed to the stormwater collection system. The stormwater is treated with an oil-water separator before discharge to the MSP storm sewer. The Vortechs hydrodynamic separator treatment system consists of a gravity-baffled unit with approximately 1,600 gallon oil storage capacity. The treatment system is inspected quarterly and cleaned as needed. Station SD 001 discharges to the Minnesota River (Class 2Bg, 3, 4A, 4B, 5, 6 water), south of Snelling Lake via the MSP storm sewer/conveyance/treatment system.

Outfall SD 002 collects stormwater from the largest part of the base, most of which is non-industrial; including buildings, driveways, parking lots, and a small part of the west-end of the aircraft parking area, away from the deicing area. The stormwater is treated via an oil-water separator before discharge to the City of Minneapolis storm sewer. The Vortechs hydrodynamic separator treatment system consists of a gravity-baffled unit with approximately 1,600 gallon oil storage capacity. The treatment system is inspected quarterly and cleaned as needed. The storm sewer discharges into the Mississippi River (Class 2Bg, 3, 4A, 4B, 5, 6 water), downstream from where Minnehaha Creek outlets into the river.

Outfall SD 003 collects stormwater from the secondary containment basins for JP-8 Tanks 600 and 601 and stormwater catch basins in the truck loading and parking area at Base Area D. The secondary containment dike system includes a bypass valve which is maintained in the locked/closed position. The treatment system for this waste stream consists of an oil-water separator with a 10,000 gallon capacity. The discharge goes into the storm sewer which discharges to an unnamed stream (Class 2Bg, 3, 4A, 4B, 5, 6 water), followed by the Mississippi River (Class 2Bg, 3, 4A, 4B, 5, 6 water) near Federal Drive and Highway 55.

Outfall SD 004 collects stormwater runoff from the perimeter of the truck-loading area at the fuel storage/transfer facility (Base Area D). The treatment system for this waste stream consists of an oil-water separator with a 10,000 gallon capacity. This waste stream is discharged into the same storm sewer as station SD 003.

Outfall SD 005 collects stormwater from a small part of the base, most of which is non-industrial; including buildings, driveways, parking lots and the glycol and fuel storage area located northeast of the aircraft parking apron. The stormwater is treated with a Vortechs hydrodynamic separator treatment system before discharge to the same MSP storm sewer as SD 001.

Changes to the facility may result in an increase in pollutant loading to surface waters or other causes of degradation to surface waters. If a change to the facility will result in a net increase in pollutant loading or other causes of degradation that exceed the maximum loading authorized through conditions specified in the existing permit, the changes to the facility are subject to antidegradation requirements found in Minn. R. 7050.0250 to 7050.0335.

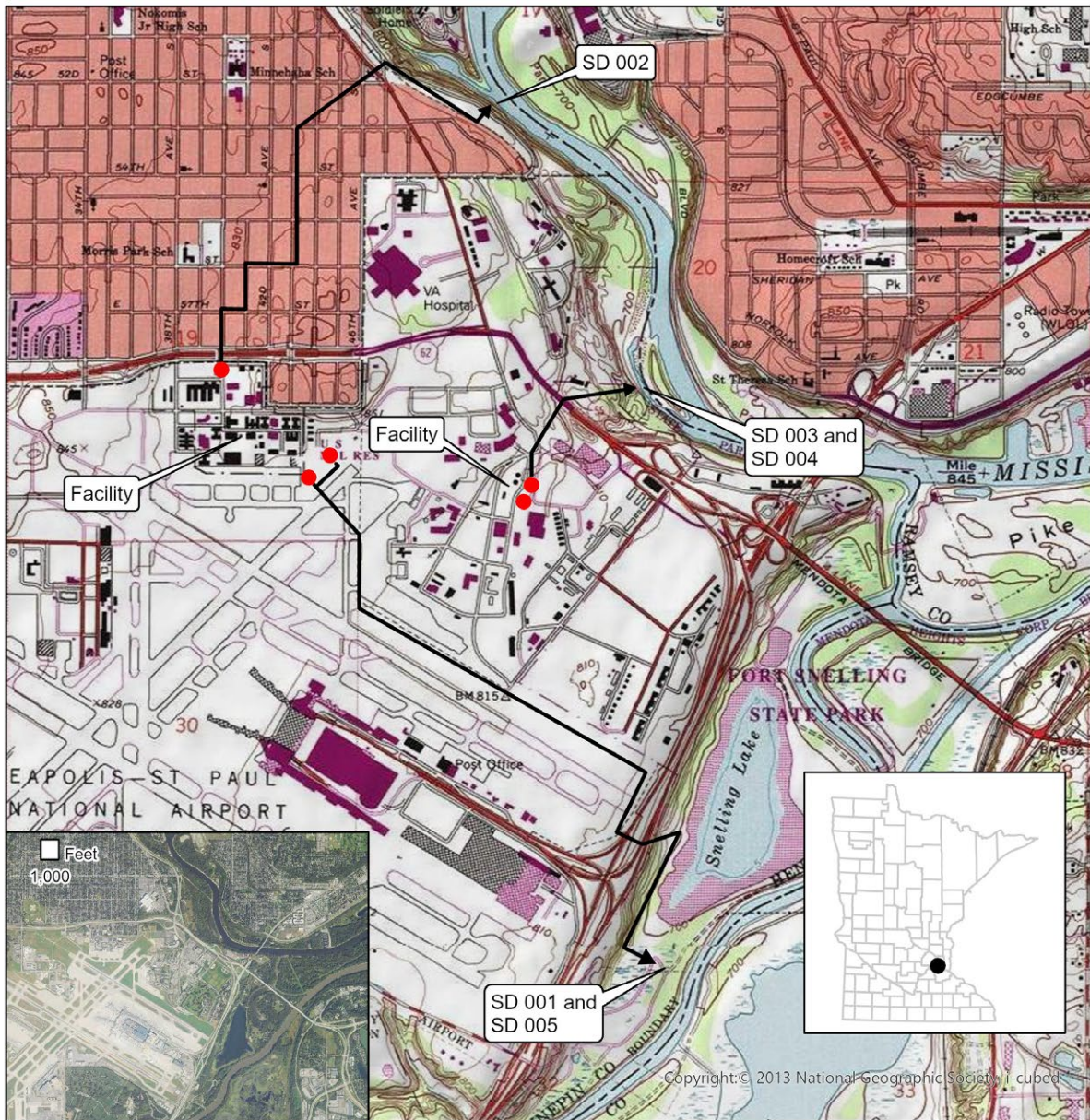
This Permit also complies with Minn. R. 7053.0275 regarding anti-backsliding.

Any point source discharger of sewage, industrial, or other wastes for which a National Pollutant Discharge Elimination System (NPDES) permit has been issued by the MPCA that contains effluent limits more stringent than those that would be established by Minn. R. 7053.0215 to 7053.0265 shall continue to meet the effluent limits established by the permit, unless the permittee establishes that less stringent effluent limits are allowable pursuant to federal law, under section 402(o) of the Clean Water Act, United States Code, title 33, section 1342.

DRAFT

2. Location map of permitted facility

Facility Location Map
MN0052141: U.S. Air Force Reserve/934th Airlift Wing
T28N, R23W, Sections 19 and 20
Minneapolis, Hennepin County, Minnesota

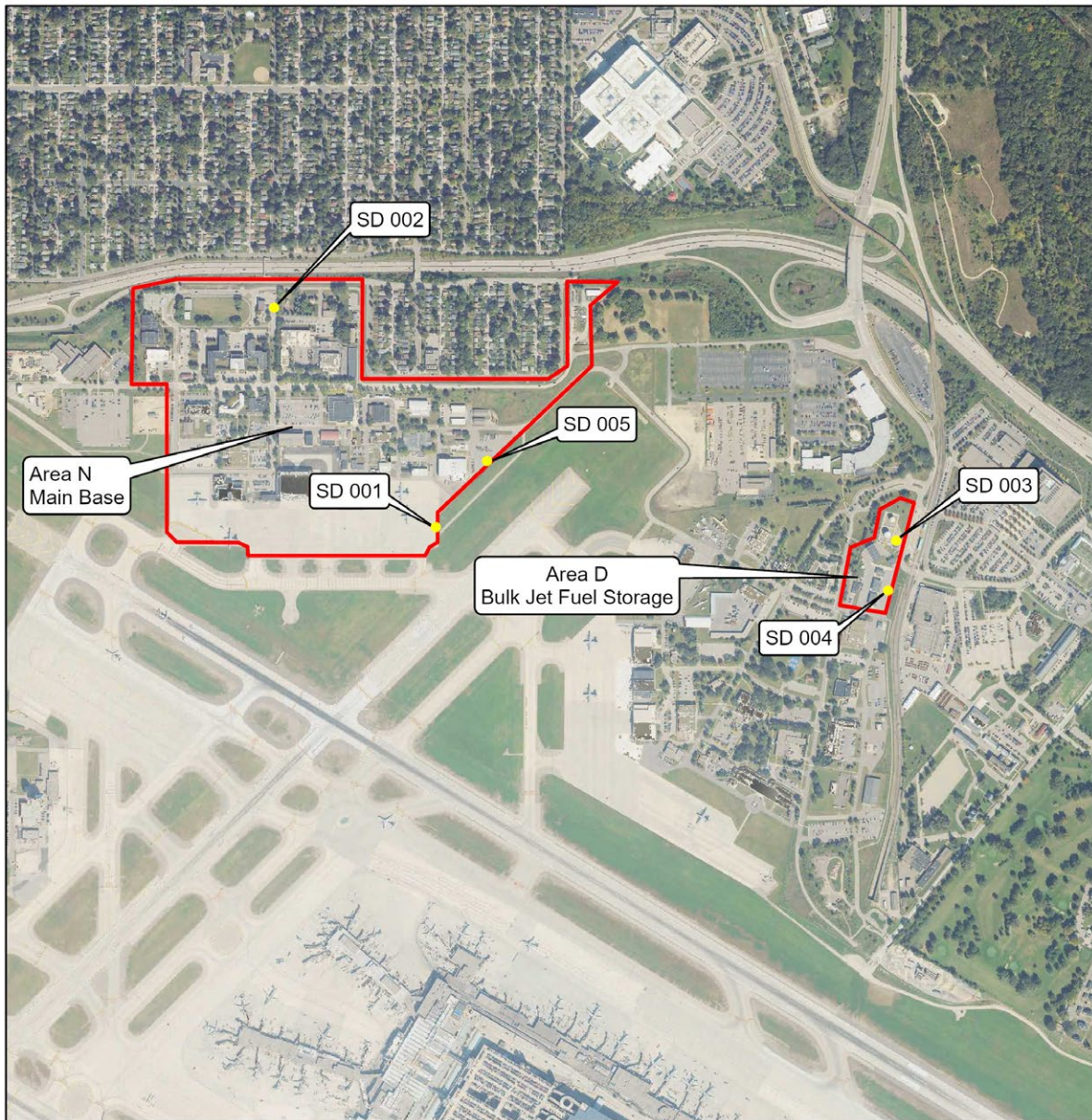


Map produced by: MPCA Staff, 5/29/2026
Scale: 1:25,000

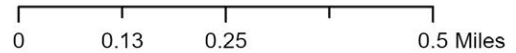
0 0.25 0.5 1 Miles

3. Monitoring locations

Monitoring Location Map
MN0052141: U.S. Air Force Reserve/934th Airlift Wing
T28N, R23W, Sections 19 and 20
Minneapolis, Hennepin County, Minnesota



Map produced by: MPCA Staff, 5/18/2026
Scale: 1:12,000



4. Summary of stations and station locations

Station	Type of station	Local name	PLS location
SD 001	Stormwater, Non-specific Runoff	Aircraft Parking Apron	T28N, R23W, S32, NE Quarter of the NE Quarter
SD 002	Stormwater, Non-specific Runoff	Discharge to Minneapolis Storm Sewer	T28N, R23W, S17, SE Quarter of the SW Quarter
SD 003	Stormwater, Non-specific Runoff	Base Area D- Secondary Containment	T28N, R23W, S20, NW Quarter of the NE Quarter of the SE Quarter
SD 004	Stormwater, Non-specific Runoff	Base Area D- Perimeter	T28N, R23W, S20, NW Quarter of the NE Quarter of the SE Quarter
SD 005	Stormwater, Non-specific Runoff	Glycol Transfer Pad to MSP Storm Sewer	T28N, R23W, S32, NE Quarter of the NE Quarter

DRAFT

5. Permit requirements

SD 001	Stormwater, Non-specific Runoff	
		Facility Specific Limit and Monitoring Requirements
	5.1.1	The Permittee shall submit a monthly DMR: Due by 21 days after the end of each calendar month following permit issuance. [Minn. R. 7001.0150, Subp. 2(B)]
	5.1.2	Sampling Location. [Minn. R. 7001.0150, subp. 2(B)]
	5.1.3	Samples for station SD 001 shall be taken at a point representative of the discharge to the Metropolitan Airports Commission (MAC) storm sewer. Samples should be taken following treatment, prior to commingling with the other waters which may be present in the storm sewer. [Minn. R. 7001.0150, subp. 2(B)]
SD 002	Stormwater, Non-specific Runoff	
		Facility Specific Limit and Monitoring Requirements
	5.2.1	The Permittee shall submit a quarterly DMR: Due by 21 days after the end of each calendar quarter following permit issuance. [Minn. R. 7001.0150, Subp. 2(B)]
	5.2.2	Sampling Location. [Minn. R. 7001.0150, subp. 2(B)]
	5.2.3	Samples for station SD 002 shall be taken following treatment, prior to commingling with the other waters which may be present in the storm sewer and shall be representative of the discharge. [Minn. R. 7001.0150, subp. 2(B)]
SD 003	Stormwater, Non-specific Runoff	
		Facility Specific Limit and Monitoring Requirements
	5.3.1	The Permittee shall submit a monthly DMR: Due by 21 days after the end of each calendar month following permit issuance. [Minn. R. 7001.0150, Subp. 2(B)]
	5.3.2	Sampling Location. [Minn. R. 7001.0150, subp. 2(B)]
	5.3.3	Samples for station SD 003 shall be taken following treatment, prior to commingling with other waters which may be present in the storm sewer and shall be representative of the discharge. [Minn. R. 7001.0150, subp. 2(B)]
SD 004	Stormwater, Non-specific Runoff	
		Facility Specific Limit and Monitoring Requirements
	5.4.1	The Permittee shall submit a monthly DMR: Due by 21 days after the end of each calendar month following permit issuance. [Minn. R. 7001.0150, Subp. 2(B)]
	5.4.2	Sampling Location. [Minn. R. 7001.0150, subp. 2(B)]
	5.4.3	Samples for station SD 004 shall be taken following treatment, prior to commingling with other waters which may be present in the storm sewer and shall be representative of the discharge. [Minn. R. 7001.0150, subp. 2(B)]
SD 005	Stormwater, Non-specific Runoff	

		Facility Specific Limit and Monitoring Requirements
	5.5.1	The Permittee shall submit a monthly DMR: Due by 21 days after the end of each calendar month following permit issuance. [Minn. R. 7001.0150, Subp. 2(B)]
	5.5.2	Sampling Location. [Minn. R. 7001.0150, subp. 2(B)]
	5.5.3	Samples for station SD 005 shall be taken from either the stormwater collection basin located on MAC property, or within the final chamber of the hydrodynamic separator, post treatment, until completion of the sampling port installation. Once the sampling port has been installed, the facility shall monitor SD 005 discharges from the sampling port location, prior to commingling with other waters which may be present in the storm sewer and shall be representative of the discharge. [Minn. R. 7001.0150, subp. 2(B)]
MN0052141	US Air Force Reserve/934th Airlift Wing	
		Facility Description and Location
	5.6.1	The drainage area for the facility includes: A. 23.2 acres for outfall SD 001; B. 47.2 acres for outfall SD 002; C. 0.7 acres for outfall SD 003; D. 2.0 acres for outfall SD 004; and E. 11 acres for outfall SD 005. [Minn. R. 7001]
	5.6.2	Spent deicing fluid will be recycled; contaminated stormwater will be discharged to the sanitary sewer per an agreement with the Metropolitan Council Environmental Services (MCES). Wastewaters associated with engine maintenance activities are captured and discharged to the sanitary sewer pursuant to a permit issued by MCES. Such wastes are not authorized for discharge under this permit. [Minn. R. 7001]
	5.6.3	The facility has developed and follows a Spill Prevention, Control and Countermeasures Plan to address any spilled petroleum products. [Minn. R. 7001]
		Surface Discharge Station General Requirements
	5.7.4	Representative Samples. [Minn. R. 7001]
	5.7.5	Samples and measurements required by this permit shall be representative of the monitored activity. [Minn. R. 7001]
	5.7.6	Surface Discharge Prohibitions. [Minn. R. 7001]
	5.7.7	Floating solids or visible foam shall not be discharged in other than trace amounts. [Minn. R. 7001]
	5.7.8	Do not discharge oil or other substances in amounts that create a visible color film. [Minn. R. 7001]
	5.7.9	The discharge shall not degrade the aquatic habitat, which includes the waters of the state and stream bed, in any material manner. [Minn. R. 7001]
	5.7.10	Irrespective of numeric effluent limitations, the pollutant levels in the discharge shall not impair the receiving water for its designated use. [Minn. R. 7001]
	5.7.11	The discharge shall not seriously impair or endanger the normal fishery and lower aquatic biota upon which it is dependent. The species composition shall not be altered materially, and the propagation or migration of the fish or other biota normally present shall not be prevented or hindered by the discharge. [Minn. R. 7001]
	5.7.12	The discharge shall not in any manner render the receiving water unsuitable or objectionable for fishing, fish culture or recreational uses. [Minn. R. 7001]
	5.7.13	The discharge shall not cause or contribute to a material increase in undesirable slime growths or aquatic plants, including algae, nor shall the discharge cause or contribute any significant increase in harmful pesticides or other residues in the waters, sediments, and aquatic flora and fauna. [Minn. R. 7001]

5.7.14	All discharges to the surface waters shall: A. Be free of toxic substances in concentrations that produce detrimental physiological responses in human, plant, animal, or aquatic life; B. Be free of discoloration that causes nuisance or adversely affects beneficial uses; and C. Not contain floating material in amounts that cause nuisance conditions or adversely affect beneficial uses. [Minn. R. 7001]
5.7.15	Install and maintain outlet protection measures at the discharge stations to prevent erosion. [Minn. R. 7001]
5.7.16	Winter Sampling Conditions. [Minn. R. 7001]
5.7.17	Sample flows at the designated monitoring stations, including when ice removal is required to sample the water. If there is a frozen station throughout a designated sampling month, check the "No Discharge" box on the electronic Discharge Monitoring Report (eDMR) and note the ice conditions in the comments section on the eDMR. [Minn. R. 7001]
5.7.18	Nitrogen Limits and Monitoring Requirements. [Minn. R. 7001]
5.7.19	The analysis for ammonia-nitrogen shall use an EPA approved method (under 40 CFR part 136), with a reporting limit of 0.1 mg/L or less. [Minn. R. 7001]
5.7.20	Analysis Requirements. [Minn. R. 7001]
5.7.21	pH analysis shall be conducted within 15 minutes of sample collection. [Minn. R. 7001]
5.7.22	Discharge flow rates shall be measured as an estimate using local MSP precipitation data. Flow estimation calculations shall consider the following: liquid precipitation readings from the National Weather Service (NWS) MSP weather station, acres contributing to the outfall and appropriate conversion factors. [Minn. R. 7001]
5.7.23	The Permittee shall submit monitoring results in accordance with the Limits and Monitoring requirements for this station. If conditions are such that no sample can be acquired, the Permittee shall report "No Flow" or "No Discharge" on electronic Discharge Monitoring Report (eDMR) and shall add a comments attachment to the eDMR detailing why the sample was not collected. [Minn. R. 7001.0150, Subp 2(B)]
5.7.24	Parameters that have a monitoring frequency of once per quarter and an effective period of Mar, Jun, Sep, Dec may be taken any time during that calendar quarter but must be reported on the designated month's DMR (e.g., the sample for the first calendar quarter of Jan-Mar will be reported on the March DMR). [Minn. R. 7001]
5.7.25	Parameters that have a monitoring frequency of once per year and an effective date of Dec may be taken any time during the calendar year but must be reported on the designated month's DMR. [Minn. R. 7001]
5.7.26	The modified Wisconsin methods Diesel Range Organics (DRO) and or Gasoline Range Organics (GRO) shall be used for petroleum hydrocarbons constituents, including but not limited to, gasoline, diesel fuel, fuel oil, kerosene, crude oil, and jet fuel. [Minn. R. 7001]
	Special Requirements
5.8.27	Aircraft and Pavement Deicing Fluids. [Minn. R. 7001]
5.8.28	The Permittee shall submit a report: Due by 21 days after the end of each calendar month following permit issuance. The Permittee shall monitor and collect data on the daily usage of all aircraft and pavement deicing fluids. This information shall be included in a report that is submitted to the MPCA with monthly eDMRs. This report shall include a summary table of total quantities and types of aircraft and pavement deicing fluids applied for the entire facility, including a breakdown of all quantities by date, specific location, number of aircraft and by drainage area. [Minn. R. 7001]
5.8.29	Benchmark Values. [Minn. R. 7001]
5.8.30	The permit includes the following benchmark values for the parameters listed below at stations SD 001, SD 002, and SD 005:

	<p>A. The five-day carbonaceous biochemical oxygen demand (CBOD₅) benchmark value is 25 mg/L; B. The chemical oxygen demand (COD) benchmark value is 120 mg/L; C. The ammonia-nitrogen benchmark value is 2.8 mg/L; and D. The total suspended solids (TSS) benchmark value is 65 mg/L.</p> <p>If these values are exceeded, the Permittee shall refer to the Industrial Stormwater Sector S: Air Transportation Facilities section of this permit. [Minn. R. 7001]</p>
5.8.31	Sample Port Installation Compliance Schedule. [Minn. R. 7001]
5.8.32	<p>The Permittee shall install equipment: Due by three years after permit issuance. The Permittee shall install a sample port to monitor stormwater discharges for the area of the facility located to the northeast of the military aircraft parking apron. Stormwater discharges from this area of the facility are identified as SD 005. The sampling port shall be in a location where stormwater can be monitored after hydrodynamic separator treatment and shall be installed by three years after permit issuance. The facility shall monitor stormwater discharges from either the stormwater collection basin located on MAC property, or within the final chamber of the hydrodynamic separator, post treatment, until completion of the sampling port installation. Once the sampling port has been installed, the facility shall only monitor SD 005 discharges from the sampling port location. [Minn. R. 7001]</p>
5.8.33	The Permittee shall submit a notice to the MPCA within 14 days of completion of the installation of the sampling port. [Minn. R. 7001]
	Phosphorus Management Plan
5.9.34	The Permittee shall submit a Phosphorus Management Plan: Due by 180 days after permit issuance. [Minn. R. 7001]
5.9.35	<p>Phosphorus is a common constituent in many wastewaters discharges and a pollutant that has the potential to negatively impact the quality of Minnesota's lakes, wetlands, rivers and streams. Therefore, phosphorus discharges are being carefully evaluated throughout the state.</p> <p>The Permittee shall prepare and submit a Phosphorus Management Plan (PMP) to the MPCA as detailed in this section. The intent of the PMP is to help maintain previous improvements and conduct ongoing evaluations to determine possible source reduction measures, operational improvements, and minor facility modifications that will reduce phosphorus loadings. [Minn. R. 7001]</p>
5.9.36	Immediately upon submittal to the MPCA, the Permittee shall implement the PMP for the remainder of this permit. [Minn. R. 7001]
5.9.37	<p>The PMP shall include, but not be limited to, an evaluation of and a plan to implement the following over the permit term:</p> <p>A. Facility influent reduction measures: i. Aircraft and pavement deicing chemicals may have high levels of phosphorus. The Permittee shall work with chemical vendors to find low phosphorus alternatives. If high phosphorus deicing chemicals are the only option, the Permittee shall reevaluate the phosphorus reduction potential of other sources and processes; ii. Determine which sources have the opportunity for further reduction of phosphorus (e.g., processes, additives, and other sources determined by the facility); iii. Determine whether known phosphorus sources have adopted or can adopt phosphorus minimization and water conservation plans; and B. Wastewater treatment facility effluent reduction measures: i. Continued optimization of existing treatment processes; and ii. An assessment of side stream loading and reductions options. [Minn. R. 7001]</p>
5.9.38	PMP guidance can be found on the MPCA's website at: https://www.pca.state.mn.us/business-with-us/phosphorus-management-plans or by contacting the compliance staff using the link provided on the cover page of this permit. [Minn. R. 7001]

		Per- and Polyfluoroalkyl Substances (PFAS)
	5.10.39	Per- and Polyfluoroalkyl Substances Analyses. [Minn. R. 7001]
	5.10.40	The Permittee shall analyze per- and polyfluoroalkyl substances (PFAS) in accordance with the following: The Permittee must sample and analyze PFAS compounds using methodology capable of detecting PFAS to the minimum reporting limits available and specifically below a two (2) nanogram per liter (ng/L) reporting limit for PFOS and PFOA, such as draft EPA method 1633 or EPA 1633A and subsequent revisions using an LC-MS/MS. [Minn. R. 7001]
	5.10.41	eDMR Requirements. [Minn. R. 7001]
	5.10.42	If all PFAS samples for a given station and monitoring period are below the reporting limit, the Permittee should report a value of less than (<) the reporting limit for that PFAS to the MPCA. If some PFAS values are less than the reporting limit but some are above, then a value of the reporting limit should be used when calculating the average for that PFAS. [Minn. R. 7001]
	5.10.43	PFAS Source Identification and Reduction. [Minn. R. 7001]
	5.10.44	The Permittee shall complete an annual PFAS Source Identification and Reduction Evaluation by March 31 of each year for the previous year. The results of the evaluation shall be kept on site and available to the MPCA upon request. The evaluation shall include: A. A detailed description of the most likely/probable source of each PFAS compound found at each distinctly separate discharge station; B. Identify discharge station(s) and PFAS compounds where monitoring results are above a Minnesota Department of Health (MDH) Health Based Value (HBV). For the identified station(s) and PFAS compounds, describe in detail the methods and technologies that will be used to eliminate or mitigate the discharge to groundwater (unsaturated zone) and by when those technologies will be implemented; C. Identify discharge station(s) where the receiving water has PFAS site specific criteria, a PFAS water quality standard, or PFAS fish consumption advisory. For the identified station(s), describe in detail the methods and technologies that will be used to eliminate or mitigate the discharge of PFAS to surface water and by when those technologies will be implemented; D. Determination as to whether additional upstream sampling locations and/or frequencies are needed to definitively locate the source(s) of PFAS and a discussion of when these activities will occur; E. What PFAS source reduction and/or elimination efforts the Permittee has taken related to, but not limited to facility production, facility operation and maintenance, and raw materials, including source water(s) in the prior calendar year, and corrective actions planned for the future. If known PFAS containing products are currently being used, discuss if an alternative is available and the feasibility of implementing the alternative; and F. Discussion if PFAS detections lead to conversation with other entities over the prior calendar year and conversations planned for the future. If so, who was contacted, when, and what topics were addressed. [Minn. R. 7001]
	5.10.45	The Permittee shall complete and submit a PFAS Source Identification and Reduction Report by 180 days prior to permit expiration. The report will include a compilation of all annual PFAS Source Identification and Reduction Evaluations over the life of the permit, summaries, recommendations, and discussion of corrective actions planned for the future. The Permittee shall submit a PFAS Source Identification and Reduction Report: Due by 180 days prior to permit expiration. [Minn. R. 7001]
		Industrial Wastewater General Requirements
	5.11.46	Prohibited Discharges. [Minn. R. 7001]
	5.11.47	This permit does not authorize the discharge of wash water, scrubber water, spills, oil, hazardous substances, or equipment/vehicle cleaning and maintenance wastewaters to ditches, wetlands, or other surface waters of the state. [Minn. R. 7001.1090, subp. 1(A)]

5.11.48	The Permittee shall prevent the routing of pollutants from the facility to a municipal wastewater treatment system in any manner unless authorized by the pretreatment standards of the MPCA and the municipal authority. [Minn. R. 7001.1090, subp. 1(A)]
5.11.49	The Permittee shall not transport pollutants to a municipal wastewater treatment system that will interfere with the operation of the treatment system or cause pass-through violations of effluent limits or water quality standards. [Minn. R. 7049.140, subp. 2]
5.11.50	Toxic Substance Reporting. [Minn. R. 7001]
5.11.51	The Permittee shall notify the MPCA immediately of any knowledge or reason to believe that an activity has occurred that would result in the discharge of a toxic pollutant listed in Minn. R. 7001.1060, subp. 4 to 10 or listed below that is not limited in the permit, if the discharge of this toxic pollutant has exceeded or is expected to exceed the following levels: A. For acrolein and acrylonitrile, 200 ug/L; B. For 2,4-dinitrophenol and 2-methyl-4,6-dinitrophenol, 500 ug/L; C. For antimony, 1 mg/L; D. For any other toxic pollutant listed in Minn. R. 7001.1060, subp. 4 to 10, 100 ug/L; or, E. Five times the maximum concentration value identified and reported for that pollutant in the permit application. [Minn. R. 7001.1090, subp. 2]
5.11.52	The Permittee shall notify the MPCA immediately if the Permittee has begun or expects to begin to use or manufacture, as an intermediate or final by-product, a toxic pollutant that was not reported in the permit application under Minn. R. 7001.1050, subp. 2 (J). [Minn. R. 7001.1050, subp. 2(J)]
5.11.53	Polychlorinated Biphenyls (PCBs). [Minn. R. 7001]
5.11.54	PCBs, including but not limited to those used in electrical transformers and capacitors, shall not be discharged or released to the environment. [Minn. R. 7001.0150, subp. 2]
	Industrial Stormwater Sector S: Air Transportation
5.12.55	Authorization. [Minn. R. 7090]
5.12.56	This chapter authorizes the Permittee to discharge stormwater associated with industrial activity from industrial activities associated with SIC code 4581 in accordance with the terms and conditions of this chapter. [Minn. R. 7090]
5.12.57	Prohibitions and Limitations on Authorization. [Minn. R. 7090]
5.12.58	This chapter does not authorize the discharge of stormwater to prohibited waters as defined in Minn. R. 7050.0335. [Minn. R. 7090]
5.12.59	Only those portions of the air transportation facility with vehicle maintenance (including vehicle rehabilitation, mechanical repairs, painting, fueling, and lubrication), equipment cleaning operations, or deicing operations are industrial activities under this chapter, unless other portions of the facility include industrial activities described in 40 C.F.R. 122.26(b)(14)(i-ix and xi), which are also regulated under this chapter. In this case, these activities are co-located with the air transportation activities and the appropriate sector requirements for these activities also apply. [Minn. R. 7090]
5.12.60	This chapter does not authorize the discharge of aircraft, ground vehicle, and equipment wash water, or the dry weather discharge of deicing chemicals. [Minn. R. 7090]
5.12.61	Water Quality Standards. [Minn. R. 7050]
5.12.62	The Permittee shall operate and maintain the facility and shall control runoff, including stormwater, from the facility to prevent the exceedance of water quality standards specified in Minnesota Rules, chs. 7050 and 7060. [Minn. R. 7050, Minn. R. 7060]
5.12.63	The Permittee shall limit and control the use of materials at the facility that may cause exceedances of groundwater standards specified in Minnesota Rules, ch. 7060. These materials include, but are not limited to, detergents and cleaning agents, solvents, chemical dust suppressants, lubricants, fuels, drilling fluids, oils, fertilizers, explosives and blasting agents. [Minn. R. 7060]
5.12.64	Potential Pollutant Sources. [Minn. R. 7090]
5.12.65	The Permittee shall identify the potential for the following activities and facility areas to contribute pollutants to stormwater discharges:

		A. Aircraft; B. Ground vehicle and equipment maintenance and cleaning; and C. Military aircraft and deicing operations (including apron and centralized aircraft deicing stations, military aircraft parking areas, and ramps). [Minn. R. 7090]
	5.12.66	If the Permittee uses deicing chemicals or pesticides, the Permittee shall maintain the records of the types the Permittee uses, including the Safety Data Sheets (SDS) and the monthly quantities. This includes all deicing chemicals, not just glycols and urea (e.g. potassium acetate). All tenants that conduct these activities shall provide the above information in their Stormwater Pollution Prevention Plan (SWPPP). Update and attach information as necessary to maintain current records. [Minn. R. 7090]
	5.12.67	Stormwater Control Measures. [Minn. R. 7090]
	5.12.68	The Permittee shall design and implement all stormwater control measures, including best management practices (BMP)s, to reduce or eliminate contact or exposure of pollutants to stormwater, to prevent erosion, control sediment and manage runoff, or remove pollutants from stormwater prior to discharge from the facility. The Stormwater Pollution Prevention Plan (SWPPP) must include the type and objective of the BMP, and a description of how the Permittee shall evaluate each BMP to determine proper function. The Permittee shall implement all non-structural BMPs immediately and all structural BMPs within 12 months of receiving authorization to discharge industrial stormwater under this permit. [Minn. R. 7090]
	5.12.69	Good Housekeeping. [Minn. R. 7090]
	5.12.70	The Permittee shall keep exposed areas that may contribute pollutants to stormwater sufficiently clean to reduce or eliminate contaminated stormwater runoff. Typical problem areas include but are not limited to: A. Trash containers, storage areas, loading docks, vehicle fueling, maintenance areas; B. Locations where dust is generated. Identify and properly manage through BMPs all on-site sources of dust to minimize stormwater contamination from the deposition of dust on the areas exposed to precipitation; and C. Locations where vehicle tracking of significant materials occur. The Permittee shall remove and properly dispose of significant materials that have been tracked off-site within one day of discovery. [Minn. R. 7090]
	5.12.71	Eliminating and Reducing Exposure. [Minn. R. 7090]
	5.12.72	The Permittee shall evaluate their stormwater control measures of their significant materials to determine if and how they can reduce or eliminate exposed materials. To the extent prudent and feasible, the Permittee shall situate industrial activities and significant materials in areas not exposed to rain, snow, snowmelt, or runoff. [Minn. R. 7090]
	5.12.73	The Permittee shall clean equipment only in the areas the Permittee identifies in the SWPPP and clearly designate these areas using ground signage or other appropriate means. [Minn. R. 7090]
	5.12.74	Preventive Maintenance. [Minn. R. 7090]
	5.12.75	The Permittee shall evaluate whether over-application of deicing chemicals on military aircraft parking areas and the deicing apron occurs by analyzing and adjusting application rates as necessary, consistent with considerations and requirements of flight safety. The personnel most familiar with the particular aircraft and flight operations in question shall carry out the evaluation. [Minn. R. 7090]
	5.12.76	The Permittee shall describe and implement measures that prevent or minimize the contamination of stormwater runoff from all areas used for aircraft, ground vehicle, and equipment maintenance (including the maintenance the Permittee conducts on the terminal apron and in dedicated hangers). [Minn. R. 7090]
	5.12.77	The Permittee shall describe and implement measures that prevent or minimize the contamination of stormwater with fuels and fuel servicing activities or other operations the Permittee conducts in support of the Military Airfield fuel system. [Minn. R. 7090]
	5.12.78	The Permittee shall store all aircraft, ground vehicles and equipment awaiting maintenance in designated areas only. The Permittee shall implement BMPs in these designated areas to prevent or

		minimize contact of stormwater with materials exposed from vehicles awaiting maintenance. [Minn. R. 7090]
5.12.79		Salt Storage, Use, and Management at the Facility. [Minn. R. 7090]
5.12.80		The Permittees should implement the following BMPs if salt piles are present at the facility: A. Cover salt piles or store the salt within a storm-resistant shelter on an impervious surface; B. Implement practices to reduce exposure resulting from adding or removing material from the salt piles (e.g., sweeping, diversions, containment); and C. Document within the SWPPP the location of any storage piles containing salt stored outside. [Minn. R. 7090]
5.12.81		The Permittee shall document within the SWPPP how the facility employees and/or hired contractors will minimize runoff from the use of salt or other de-icing/anti-icing materials used on the facility property. [Minn. R. 7090]
5.12.82		Erosion Prevention & Sediment Control. [Minn. R. 7090]
5.12.83		The Permittee shall identify areas at the facility that, due to topography, land disturbance (e.g. construction, grading, landscaping), or other factors, have potential for soil erosion. In those areas, the Permittee shall implement structural, vegetative, and/or stabilization BMPs to prevent or control on-site erosion and reduce sediment loads in stormwater discharges. [Minn. R. 7090]
5.12.84		Chemical Additive Use. [Minn. R. 7090]
5.12.85		If the Permittee intends to use polymers, flocculants, or other sedimentation treatment chemicals at the facility, the Permittee shall comply with the following minimum requirements: A. The Permittees must use conventional erosion and sediment controls prior to chemical addition to ensure effective treatment; B. Chemicals may only be applied where treated stormwater flows to a sediment control system that allows for filtration or settlement of the floc prior to discharge; C. Chemicals must be selected that are appropriately suited to the types of soils likely to be exposed to stormwater runoff at the facility, and to the expected turbidity, pH, and flow rate of stormwater flowing into the chemical treatment system; and D. Use chemicals in accordance with standard engineering practices, and with dosing specifications and sediment removal design specifications of the manufacturer or chemical supplier. [Minn. R. 7090]
5.12.86		The SWPPP must contain an inventory of all chemical additives the Permittee uses to treat stormwater including, at a minimum, the following: A. The process for the use of the additive; B. The method of application, application frequency, concentration, and daily average and maximum rates of use; C. A complete product use and instruction label; and D. Material Safety Data Sheet (MSDS), for the additive(s), which must include: i. Aquatic toxicity, human health, and environmental fate information for the additive. The aquatic toxicity information must include, at minimum, the results of: a) a 48-hour LC50 or EC50 acute study for a North American freshwater planktonic crustacean (either Ceriodaphnia or Daphnia sp.) and b) a 96-hour LC50 acute study for rainbow trout, bluegill or fathead minnow or another North American freshwater aquatic species other than a planktonic crustacean; and ii. The commercial and chemical names and Chemical Abstract Survey (CAS) number for all ingredients in the additive to the extent possible. [Minn. R. 7090]
5.12.87		Use of Infiltration Systems and/or Industrial Stormwater Ponds for Stormwater Treatment and Disposal. [Minn. R. 7090]
5.12.88		Industrial Stormwater Ponds. [Minn. R. 7090]
5.12.89		The Permittee of a Sector S industrial facility that does not conduct deicing activities, as defined below, has authorization to use industrial stormwater ponds for stormwater management without additional restrictions. [Minn. R. 7090]
5.12.90		The Permittee of a Sector S industrial facility that conducts deicing activities, as defined below, has authorization to use industrial stormwater ponds for stormwater management provided that any

	<p>industrial stormwater pond constructed after April 5, 2010, permit meets the following design criteria:</p> <p>A. Line the industrial stormwater pond with a synthetic liner that is chemically compatible with materials expected to enter the pond. Design the pond to restrict infiltration to less than 500 gallons per acre per day. The pond must be Ultraviolet (UV) stable; and</p> <p>B. Design the industrial stormwater pond in accordance with accepted engineering practices identified in the latest version of the MPCAs "Recommended Pond Design Criteria". [Minn. R. 7090]</p>
5.12.91	Infiltration Systems. [Minn. R. 7090]
5.12.92	The Permittee of a Sector S industrial facility that does not conduct deicing activities, as defined below, has authorization to use a designed infiltration system for industrial stormwater management and is not required to comply with the requirement below. [Minn. R. 7090]
5.12.93	The Permittee of a Sector S industrial facility that conducts deicing activities, as defined below, has authorization to use a designed infiltration system for stormwater management, implemented prior to April 5, 2010, provided the Permittee complies with the following requirements: <p>A. The Permittee shall conduct benchmark monitoring in accordance with the terms and conditions of this permit for all industrial stormwater prior to infiltration; and</p> <p>B. If the Permittee has a designed infiltration system operating prior to April 5, 2010, the Permittee has authorization to continue using that device. However, on or after April 5, 2010, the Permittee does not have authorization to construct new infiltration systems, expand infiltration activities or practices that result in infiltration, or expand volume of infiltration. [Minn. R. 7090]</p>
5.12.94	Management of Runoff. [Minn. R. 7090]
5.12.95	The SWPPP must describe all permanent stormwater BMPs the Permittee implements at the facility to manage runoff, including, but not limited to, the permanent structural BMPs used to divert stormwater runoff away from fueling, manufacturing, treatment, storage, and disposal areas, and BMPs that treat, infiltrate, reuse, contain, or otherwise reduce pollutants in stormwater discharges. [Minn. R. 7090]
5.12.96	The Permittee shall describe and implement a program to control or manage contaminated runoff to reduce the amount of pollutants discharging from the facility. Describe the controls the Permittee uses for collecting, containing or disposal of contaminated snow or contaminated snowmelt water. [Minn. R. 7090]
5.12.97	The Permittee shall install and maintain stormwater outlet protection measures to prevent erosion at all areas where stormwater is discharging from the Permittee's operational control. [Minn. R. 7090]
5.12.98	Permittees shall prevent the discharge of stormwater to or from areas that have been impacted by the release of a pollutant or contaminant. This includes preventing potential pollutant mobilization through subsurface soils. [Minn. R. 7060.200, Minn. Stat. ch. 115.03]
5.12.99	Industrial stormwater ponds and infiltration systems must not contribute to a pollutant or contaminant spreading to a greater extent or magnitude in locations where pollutants or contaminants exist in the soil or in the shallow aquifer and are under other regulatory authority. A qualified professional (e.g. professional hydrogeologist, engineer, etc.) shall conduct a site analysis evaluating for extent and magnitude of impacted soil and groundwater and file a report with the SWPPP for any pollutant or contaminant on-site. [Minn. R. 7090, Minn. Stat. ch. 115.03]
5.12.100	If the Permittee finds that industrial stormwater ponds and infiltration systems are a contributor to contaminant increases or movement, the Permittee shall submit a plan to the MPCA that describes how the Permittee will reduce contaminants, or will redesign, relocate, or eliminate the industrial stormwater ponds and infiltration systems, as needed, to eliminate the contribution to contaminant problems. The Permittee shall submit the plan to the MPCA within one year of the Permittee's authorization to discharge under this permit or within one year of discovery if the Permittee discovers their ponds or infiltration systems are a contributor of contaminant spreading. The Permittee shall implement the plan as soon as the MPCA grants approval. The plan does not reduce or eliminate more stringent requirements that other MPCA regulatory programs may impose. [Minn. R. 7090]
5.12.101	This permit prohibits Permittees from constructing infiltration systems in areas within 1,000 feet up-gradient or 100 feet down-gradient of active karst features. The Permittee shall not use industrial

	<p>stormwater ponds and infiltration systems in any high-risk karst area unless a qualified professional (e.g. professional hydrogeologist, engineer, etc.) conducts a geotechnical evaluation to ensure that the industrial stormwater pond or infiltration system does not present a significant risk to groundwater. The Minnesota Stormwater Manual describes standard engineering practices. The Manual can be found on the MPCA's website. If the industrial stormwater ponds and infiltration systems present a risk, the Permittee shall take appropriate measures to minimize or eliminate the risk, such as sealing or removal of the industrial stormwater ponds or infiltration systems. The Permittee shall document the evaluation with the SWPPP. [Minn. R. 7090]</p>
5.12.102	<p>This permit prohibits the construction of a new infiltration system in the following areas:</p> <ul style="list-style-type: none"> A. Areas that receive discharges from vehicle fueling and maintenance activity; B. Areas with less than three feet of separation distance from the bottom of the infiltration system to the elevation of the seasonally saturated soils or the top of bedrock; C. Areas of predominately Hydrologic Soil Group D (clay) soils; and D. Areas where soil infiltration rates are field measured at more than 8.3 inches per hour unless the Permittee amends the soil to slow the infiltration rate below 8.3 inches per hour. [Minn. R. 7090]
5.12.103	<p>The Permittee shall coordinate industrial stormwater ponds and infiltration systems in vulnerable wellhead protection areas with local drinking water authorities and design them to not adversely affect drinking water supplies. The Permittee shall contact the appropriate local drinking water authorities and document coordination efforts with the SWPPP. [Minn. R. 7090]</p>
5.12.104	<p>This permit prohibits Permittees from constructing infiltration systems within a Drinking Water Supply Management Area (DWSMA) as defined in Minn. R. 4720.5100, subp. 13. If Permittees locate infiltration systems within the following areas, Permittees shall review and apply the requirements found in the "Guidance and recommendations for conducting a higher level of engineering review for stormwater infiltration in DWSMAs and Wellhead Protection Areas" section of the Minnesota Stormwater Manual (www.pca.state.mn.us):</p> <ul style="list-style-type: none"> A. In an Emergency Response Area (ERA) within a DWSMA classified as having high or very high vulnerability as defined by the Minnesota Department of Health (MDH); or B. In an ERA within a DWSMA classified as moderate vulnerability unless a regulated MS4 Permittee performed or approved a higher level of engineering review sufficient to provide a functioning treatment system and to prevent adverse impacts to groundwater; or C. Outside of an ERA within a DWSMA classified as having high or very high vulnerability, unless a regulated MS4 Permittee performed or approved a higher level of engineering review sufficient to provide a functioning treatment system and to prevent adverse impacts to groundwater. [Minn. R. 7090]
5.12.105	<p>Permittees with any infiltration system defined as a US EPA Class V injection well shall contact the US EPA Region V to determine the need to register as a Class V injection well. Refer to the US EPA Underground Injection Well Program for the definitions and complete registration process. The Permittee shall document contacts and US EPA response with the SWPPP. [Minn. R. 7090]</p>
5.12.106	<p>Facility Inspection Requirements. [Minn. R. 7090]</p>
5.12.107	<p>The Permittee shall conduct two inspections per month with no less than 10 days between inspections during the deicing season, as specified in the Permittee's SWPPP. [Minn. R. 7090]</p>
5.12.108	<p>The Permittee shall develop and implement an inspection schedule that includes a minimum of one facility inspection per calendar month. In addition, a total of 2 inspections must occur during runoff events, with at least one inspection occurring during a snowmelt runoff event. Each inspection must include a visual assessment of the runoff to identify any visible sheens or films that indicate the presence of oil or grease in the discharge. If sheens are present in stormwater discharges, implement corrective actions to prevent sheen and document those corrective actions in the SWPPP. [Minn. R. 7090]</p>
5.12.109	<p>There shall be at least one inspection conducted under each of the following conditions:</p> <ul style="list-style-type: none"> A. During periods of actual deicing operations. If not practicable during active deicing or the weather is too inclement, conduct an inspection when deicing operations are likely to occur and the materials and equipment for deicing are in place;

	<p>B. Within the first hour of discharge following or during a hard rain event;</p> <p>C. During a dry period in the third calendar quarter (July/August/September) when there has been at least seven consecutive days of no rain [this is waived if such an inspection has been conducted during a previous permit cycle and there are/were no site changes affecting facility discharges]. The purpose of the dry weather inspection is to ensure no non-stormwater discharges; and</p> <p>D. During a significant snowmelt event in the first calendar quarter (January/February/March) when temperatures are projected to be above freezing for two or more consecutive days. [Minn. R. 7050]</p>
5.12.110	<p>If a facility is inactive and unstaffed, monthly facility inspections are not required as long as there are no industrial materials or activities exposed to stormwater. However, the Permittee shall include the following in the SWPPP:</p> <p>A. BMP implementation that assures adequate protection of all waters receiving industrial stormwater discharges from the facility during the months the facility is inactive and unstaffed; and</p> <p>B. Which months the facility was inactive and unstaffed. [Minn. R. 7090]</p>
5.12.111	<p>All facility inspections must include the following:</p> <p>A. An evaluation of the facility to determine that the SWPPP accurately reflects site conditions. At a minimum, the Permittee shall inspect storage tank areas, waste disposal areas, maintenance areas, loading/unloading areas, and raw material, intermediate product, by-product and final product storage areas;</p> <p>B. An evaluation of all structural and non-structural BMPs to determine effectiveness and proper function;</p> <p>C. An evaluation of the facility to determine whether there are new exposed significant materials or activities at the site since completion of the SWPPP; and</p> <p>D. During an inspection conducted during a runoff event, an evaluation of the stormwater runoff to determine discoloration or if other contaminants are visible in the runoff (e.g. oil & grease). [Minn. R. 7090]</p>
5.12.112	<p>The Permittee shall document all inspections, and the following information must be stored with the SWPPP:</p> <p>A. Inspection date (i.e. mm/dd/yyyy), time, and weather conditions;</p> <p>B. Inspector name;</p> <p>C. Inspection findings; and</p> <p>D. A description of any necessary corrective actions and a schedule for corrective action completion. [Minn. R. 7090]</p>
5.12.113	<p>If conditions are observed at the site that require changes in the SWPPP, such changes shall be made to the SWPPP prior to submission of the annual report for that calendar year. [Minn. R. 7090]</p>
5.12.114	<p>Maintenance Requirements. [Minn. R. 7090]</p>
5.12.115	<p>BMP Maintenance. [Minn. R. 7090]</p>
5.12.116	<p>The Permittee shall maintain all stormwater BMPs at the facility, to ensure BMP effectiveness.</p> <p>A. The Permittee shall develop a schedule for preventive maintenance of all stormwater BMPs, and store the schedule with the SWPPP;</p> <p>B. If the Permittee identifies BMPs that are not functioning properly, the Permittee shall replace, maintain, or repair the BMPs within seven calendar days of discovery. If the Permittee cannot complete BMP replacement, maintenance, or repair within seven calendar days, the Permittee shall implement effective backup BMPs within 48 hours of discovery and maintain the backup BMPs until the Permittee restores the effectiveness of the original BMPs. The Permittee shall document the justification for an extended replacement, maintenance, or repair schedule of the failed BMPs, and store it with the SWPPP; and</p> <p>C. The Permittee shall record dates of maintenance and repairs. The Permittee shall store these records with the SWPPP. [Minn. R. 7090]</p>
5.12.117	<p>Stormwater sedimentation basins and infiltration basins must have maintenance plans that are included within the SWPPP. The plans must include but aren't limited to information detailing how the basin will be maintained and monitored to ensure effectiveness. The plans must include a description of the minimal maintenance frequency that will be implemented. There shall be no outflow from the stormwater sedimentation basin while sediment is being removed from the basin.</p>

	Permanent erosion control, such as rip rap, splash pads, or gabions shall be installed at the outlet(s) to prevent downstream erosion. [Minn. R. 7090]
5.12.118	Equipment Preventive Maintenance. [Minn. R. 7090]
5.12.119	The Permittee shall develop and implement a preventive maintenance program and store the information with the SWPPP. The program must require regular inspection, maintenance, and repair of industrial equipment and systems. The inspections must identify conditions that could cause breakdowns or failures, which may result in leaks, spills, and other releases (e.g. hydraulic leaks, torn bag-house filters, etc.), and the discharge of pollutants to stormwater. The preventive maintenance program may incorporate, by reference, a separate Operation and Maintenance Manual (or equivalent), as long as it addresses the items the preventive maintenance program requires above. [Minn. R. 7090]
5.12.120	Spill Prevention and Response Requirements. [Minn. R. 7090]
5.12.121	<p>The Permittee shall develop and implement a spill prevention and response procedure. If the facility already has a separate plan (e.g. Prevention and Response Plan as required by Minn. Stat. ch. 115E, or Spill Prevention Control and Countermeasure (SPCC) Plan as required by Federal Law), that Permittee can incorporate the plan by reference into the SWPPP.</p> <p>In either case, the Permittee shall include a minimum of the following components with the SWPPP or in a separate SPCC document:</p> <p>A. Areas where the storage, transfer, or use of solid or liquid significant materials occurs and, where spills and leaks of the material may potentially contribute pollutants to stormwater discharges;</p> <p>B. Identify areas, monitoring locations and surface waters that may be affected by spills, leaks, or discharges from emergency firefighting activities;</p> <p>C. Report and document spills or leaks (pursuant to Minn. Stat. 115.061) that occur in exposed areas, or that drain to a monitoring location;</p> <p>D. Material handling procedures, storage requirements, and cleanup equipment/materials and procedures necessary to recover as rapidly and thoroughly as possible spills or leaks pursuant to Minn. Stat. 115.061. The Permittee shall make all methods and procedures available to appropriate facility personnel;</p> <p>E. Contact information for individuals and emergency and regulatory agencies that require notification in the event of a spill. When a spill or discharge of a potentially polluting material occurs, the Permittee shall immediately notify the Minnesota Department of Public Safety Duty Officer at 800-422-0798 (toll free) or 651-649-5451 (metro area) per Minn. Stat. 115.061; and</p> <p>F. Any use or release of per-and polyfluoroalkyl (PFAS)-containing foam must immediately be reported to the Minnesota Duty Officer. Permittees must detail in their spill response plan all actions that will be taken to prevent finished Class B foam and foam-containing firefighting runoff water from entering stormwater systems or flowing to surface waters. [Minn. R. 7090]</p>
5.12.122	The Permittee shall ensure the use of infiltration is not part of a spill containment plan. This includes spill plans required under Federal Spill Prevention Containment and Control (SPCC) requirements or Minn. Stat. ch. 115E "The Spill Bill." [Minn. R. 7090]
5.12.123	The Permittee shall ensure the use of a pond is not part of a spill containment plan, including spill plans required under Federal SPCC requirements or Minn. Stat. ch. 115E, unless appropriate controls are in place to contain the spill. If the Permittee uses a pond as part of a spill containment plan, the pond must have a chemically compatible liner for chemical spills that the Permittee expects to enter the pond and must have outlet controls to contain a spill. A plan must also be in place to clean up a spill so that the pond will not continue to be a source of spilled pollutants. The Permittee shall document evaluations with the SWPPP. [Minn. R. 7090]
5.12.124	Mercury Minimization Plan. [Minn. R. 7090]
5.12.125	The Permittee shall evaluate the facility to determine if stormwater has the potential to come into contact with any mercury sources. If mercury sources are exposed to stormwater, the Permittee shall develop a Mercury Minimization Plan that describes how the Permittee will manage mercury sources at the site to eliminate exposure to precipitation and stormwater runoff. To the extent feasible, the Permittee shall remove and manage mercury sources and devices from stormwater exposure in

		accordance with Minn. R. ch. 7045, Hazardous Waste, and any additional applicable state and federal rules. [Minn. R. 7090]
	5.12.126	Employee Training Program. [Minn. R. 7090]
	5.12.127	The Permittee shall develop and implement a training program for employees. Training must cover stormwater control measures, components and goals of the SWPPP, monitoring procedures, and other applicable requirements of the permit. The program must include a training schedule that includes training at least annually. Training must correlate with the job function of the employee. The Permittee shall ensure that employees identified below in this Employee Training Program section are familiar with facility specific stormwater plans, requirements, and BMPs at the facility. The Permittee shall ensure that individuals receive training prior to assuming responsibilities listed in this Employee Training Program section. [Minn. R. 7090]
	5.12.128	At a minimum, the Permittee shall ensure that the following individuals receive training: A. Employee(s) responsible for writing, revising, and implementing the SWPPP; B. Employee(s) responsible for installing, inspecting, maintaining, and repairing BMPs; C. Employee(s) whose work involves the regulated industrial activity, including but not limited to: i. Loading/unloading areas; ii. Processing areas; iii. Waste and fluid management areas; iv. Fueling areas; and v. Vehicle maintenance areas; D. Employee(s) who conduct stormwater discharge monitoring. E. Employee(s) responsible for conducting winter maintenance activities. [Minn. R. 7090]
	5.12.129	The Permittee shall maintain training records including: A. The trainer's name and trainer's organization (internal or external); B. The names (printed first and last) of the employee(s) and date(s) the employee(s) received training; and C. A detailed description of the training provided to each employee. [Minn. R. 7090]
	5.12.130	The Permittee shall maintain the training records either in the SWPPP, or in a separate record stored with the SWPPP, for at least three years. [Minn. R. 7090]
	5.12.131	The Permittee shall address the following in the employee training program: A. Proper handling of deicing materials and fuels; B. Spill and leak prevention; and C. Proper recordkeeping of storage and application of deicing fluids. [Minn. R. 7090]
	5.12.132	Stormwater Pollution Prevention Plan. [Minn. R. 7090]
	5.12.133	A. The Permittee shall develop and implement a SWPPP to address the specific conditions at the facility. B. A Permittee with authorization under the previous version of this permit shall modify the SWPPP to comply with the requirements of this updated permit. C. The SWPPP must identify the individuals responsible for managing, implementing, maintaining, modifying, and ensuring compliance with the facility's SWPPP. D. The Permittee shall incorporate into the SWPPP, a section specific to any mobile industrial activities the Permittee conducts away from the facility. The Permittee shall keep a copy of this section of the SWPPP at the location where the mobile industrial activity occurs. E. The SWPPP must list all personnel receiving training to conduct facility inspections. F. The SWPPP must include records of all details relating to the monthly visual inspections in accordance with the Stormwater Control Measures section of this chapter. G. The SWPPP must include all information pertaining to maintenance in accordance with the Stormwater Control Measures section of this chapter. H. The SWPPP must contain, or the Permittee shall keep as a separate document, any documentation the Spill Prevention and Response Requirements of the Stormwater Control Measures section of this chapter requires. I. The SWPPP must contain a Mercury Minimization Plan if the Permittee discovers mercury sources as a result of compliance with the Stormwater Control Measures section of this chapter.

	<p>J. The SWPPP must include all information regarding the Employee Training Program requirements from the Stormwater Control Measures section of this chapter.</p> <p>K. The SWPPP must describe all stormwater BMPs the Permittee implements at the facility to manage runoff, including, but not limited to:</p> <ul style="list-style-type: none"> i. The permanent structural BMPs used to divert stormwater runoff away from fueling, manufacturing, treatment, storage, and disposal areas; and ii. BMPs that treat, infiltrate, reuse, contain, or otherwise reduce pollutants in stormwater discharges. <p>L. The SWPPP must include the date it was implemented and the date it was last modified.</p> <p>M. The SWPPP must include any stormwater contamination and/or runoff mitigation measures proposed to be part of the final project in any environmental review. [Minn. R. 7090]</p>
5.12.134	Special and Impaired Waters SWPPP Requirements. [Minn. R. 7090]
5.12.135	The SWPPP must document all stormwater BMPs that are implemented to comply with the Impaired Waters section of this chapter when an impaired or special water is identified within one mile of an industrial facility's benchmark monitoring location and where the identified impaired or special water receives discharge from the industrial facility's stormwater monitoring location. [Minn. R. 7090]
5.12.136	<p>The SWPPP must contain the following components:</p> <ul style="list-style-type: none"> A. Industrial stormwater volume reduction and/or pollutant concentration reduction BMPs, designed to restrict industrial stormwater discharges to the designated water; B. The SWPPP must include calculations to demonstrate the effectiveness of the chosen BMPs in reducing volume and/or pollutant concentrations; and C. A narrative discussion describing how the Permittee will monitor and maintain the BMPs the Permittee uses to ensure the industrial facility will sustain restricted industrial stormwater discharges. [Minn. R. 7050, Minn. R. 7090]
5.12.137	Facility Description. [Minn. R. 7090]
5.12.138	<p>The SWPPP must include:</p> <ul style="list-style-type: none"> A. A narrative description of the industrial activities the Permittee conducts at the facility; B. The total size of the facility property in acres; and C. A calculation of the facility acreage that has industrial activity and/or significant materials in contact with stormwater. The calculation excludes acreage that does not discharge industrial stormwater, such as natural and landscaped areas, employee parking lots, and office buildings, etc. [Minn. R. 7090]
5.12.139	Facility Map. [Minn. R. 7090]
5.12.140	<p>The SWPPP must include a map. The facility map(s) must be a United States Geological Survey map or equivalent and must depict the following:</p> <ul style="list-style-type: none"> A. Location of the facility in relation to surface waters receiving industrial stormwater discharges from the facility. Include the name of the surface water on the map. If the name is not known, indicate that on the map; B. Location of all impervious surfaces within the facility property boundaries; C. Arrows that indicate directions of stormwater flow; D. Location of all activities and materials identified in the Facility Assessment of Activities and Materials section below; E. Location of all structural BMPs; F. Location of all impaired waters within one mile of any monitoring location. The Permittee shall include the name of the impaired water and the impairment (e.g. impaired for biota, turbidity, nutrients, etc.); G. Location and name of any designated, special or restricted waters described in the Additional Requirements for Discharges to Special and Impaired Waters section of this chapter that is within one mile of a facility's monitoring location; H. Location of all storm sewer inlets; I. Location of all loading dock drains, including those that connect to a storm sewer; and J. Location of each benchmark monitoring location. Assign each benchmark monitoring location a unique identifying number that the Permittee uses when submitting monitoring data to the MPCA.

	Clearly label each benchmark monitoring location from which a discharge flows to, and is within one mile of, an impaired water and/or special water. [Minn. R. 7090]
5.12.141	<p>In addition, the Permittee shall also comply with the following:</p> <p>A. Facility Map. The Permittee shall identify the following areas of the facility and indicate whether activities occurring are or may come into contact with stormwater:</p> <ul style="list-style-type: none"> i. Aircraft and facility deicing operations; ii. Fueling stations; iii. Aircraft; iv. Ground vehicle and equipment maintenance/cleaning areas; and v. Storage areas for aircraft, ground vehicles, and equipment awaiting maintenance. <p>Where applicable, Permittees meeting the definition of tenant, as defined below, shall create a SWPPP specific to the tenant's own operations for stormwater discharges associated with the leased property/space. The individual tenant's SWPPP must reference the airport authority's SWPPP with coordination between the two entities. Conversely, the airport authority's SWPPP must reference the tenant's SWPPP with coordination between the two entities. [Minn. R. 7090]</p>
5.12.142	Facility Assessment of Activities and Materials. [Minn. R. 7090]
5.12.143	Assessment of Activities. [Minn. R. 7090]
5.12.144	<p>The SWPPP must include an assessment and inventory of all activities that can potentially be sources of pollutants to industrial stormwater discharges. Examples of these activities include, but are not limited to:</p> <ul style="list-style-type: none"> A. Fueling; B. Vehicle and equipment maintenance; C. Loading and unloading of dry bulk materials or liquids; D. Liquid storage tanks; E. Outdoor manufacturing and processing; F. Outdoor storage of significant materials; G. Access roads, rail cars, and tracks; H. Waste treatment, storage, or disposal including waste ponds, dumpsters, and solid waste storage or management; I. Dust or particulate-generating processes including dust collection devices and vents; and J. Contamination of rooftops by pollution control devices. [Minn. R. 7090]
5.12.145	Assessment of Materials and Associated Pollutants. [Minn. R. 7090]
5.12.146	<p>The SWPPP must include documentation of an assessment and inventory of all facility materials that can potentially be a source of pollutants to industrial stormwater discharges from the following:</p> <ul style="list-style-type: none"> A. Raw materials; B. Intermediate products; C. By-products; D. Final products; and E. Waste products. <p>The assessment must also include pollutant constituents, such as crankcase oil, zinc, sulfuric acid, cleaning solvents, etc. associated with the sources listed above. [Minn. R. 7090]</p>
5.12.147	BMP Documentation. [Minn. R. 7090]
5.12.148	<p>The Permittee shall document in the SWPPP all BMPs the Permittee uses to comply with each stormwater control measure required in the Stormwater Control Measures section of this chapter. The Permittee shall design and implement BMPs to address the potential pollutants associated with the activities and materials that the Permittee identifies in the Facility Assessment of Activities and Materials section above. The documentation must include a list of all structural and non-structural BMPs the Permittee designs and implements at the facility. [Minn. R. 7090]</p>
5.12.149	SWPPP Modification Requirements. [Minn. R. 7090]

5.12.150	<p>The Permittee shall review the SWPPP at least annually. The Permittee shall modify the SWPPP within 30 days if:</p> <p>A. There is construction or a change in design, operation, or maintenance at the facility that affects stormwater management or compliance with this permit;</p> <p>B. The Permittee identifies a monitoring location that is within one mile of an impaired water, including newly listed impaired waters;</p> <p>C. A routine inspection, compliance evaluation, or visual inspection identifies deficiencies in the SWPPP and/or BMPs;</p> <p>D. Additional stormwater control measures and BMPs are necessary to meet applicable water quality standards or to address exceedances of benchmark values;</p> <p>E. There is an unauthorized discharge from the facility. If the SWPPP modification is because of a release or unauthorized discharge, update the SWPPP to include a description and date of the release, the circumstances leading to the release, actions taken in response to the release, and measures to prevent the recurrence of such releases. Unauthorized releases and discharges are subject to the reporting requirements in the Stormwater Control Measures section of this chapter; or</p> <p>F. There is a change in personnel responsible for managing the SWPPP, implementing BMPs, conducting monthly visual inspections, or collecting stormwater samples at the facility.</p> <p>[Minn. R. 7090]</p>
5.12.151	SWPPP Implementation and Availability Requirements. [Minn. R. 7090]
5.12.152	The SWPPP shall be developed and implemented within 180 days after permit issuance and shall be available to the MPCA upon request. [Minn. R. 7090]
5.12.153	Benchmark Monitoring Requirements. [Minn. R. 7090]
5.12.154	The Permittee shall monitor each benchmark monitoring location for all benchmark parameters specified for the facility's SIC code at the frequency outlined in the Limits and Monitoring section of this permit specified for the Surface Discharge Stormwater, Non-Specific Runoff Stations. Sector specific benchmark parameters include CBOD ₅ , COD, ammonia-nitrogen, and TSS. [Minn. R. 7090]
5.12.155	Specified parameters shall be sampled at the frequency outlined in the Limits and Monitoring section of this permit. Each quarterly sample may be collected at any time during the calendar quarter but must be reported on the designated month's DMR (e.g., the sample for the first calendar quarter of Jan-Mar will be reported on the March DMR). [Minn. R. 7090]
5.12.156	Monitoring Procedures and Sample Collection Methods. [Minn. R. 7090]
5.12.157	The Permittee shall maintain written records of all calibrations and maintenance within the SWPPP. [40 CFR 136.3]
5.12.158	When to Collect a Sample. [Minn. R. 7090]
5.12.159	<p>Permittees shall collect samples from a measurable runoff event (rain or snowmelt) at the benchmark monitoring location(s), provided there is a gap of three days between measurable runoff events.</p> <p>To the extent feasible, during a measurable runoff event, Permittees shall collect samples each calendar quarter. The Permittee shall attempt to collect a stormwater discharge sample within the first 30 minutes after the discharge reaches the benchmark monitoring location. If unable to collect a sample within 30 minutes the Permittee shall document an explanation as to why they could not collect the sample within 30 minutes on the eDMR. [Minn. R. 7090]</p>
5.12.160	In addition to the Benchmark Monitoring Requirements section of this chapter, the Permittee shall collect two of the facility's four required samples for the applicable parameters during periods that are during the Military Airfield's deicing season the Permittee specifies. [Minn. R. 7090]
5.12.161	Unable to Collect a Sample. [Minn. R. 7090]
5.12.162	Permittees shall submit an eDMR to the MPCA for every calendar month as specified in the Limits and Monitoring section of this permit for stations SD 001, SD 003, SD 004 and SD 005. Permittees shall submit an eDMR to the MPCA for every calendar quarter for station SD 002. In the absence of a measurable runoff event during a quarter due to weather conditions and/or site soil characteristics, the Permittee shall include a comment on the eDMR, providing an explanation as to why a sample was not able to be collected, and submit the report to the MPCA. [Minn. R. 7090]

5.12.163	Compare quarterly samples to benchmark value. [Minn. R. 7090]
5.12.164	After collecting and analyzing quarterly samples, one per calendar quarter for each benchmark monitoring location, Permittees shall compare it against the benchmark value for parameters CBOD ₅ , COD, ammonia-nitrogen, and TSS. If the Permittee collects more than one sample per calendar quarter then, the results must be averaged within the quarter. The Permittee shall compare the average of the quarterly monitoring results with the applicable benchmark value for its applicable sectors and refer to the Benchmark Values Exceeded section below to determine any necessary further actions. [Minn. R. 7090]
5.12.165	For averaging purposes, the Permittee shall use a value of zero for any sample result the laboratory reports that is less than the method detection limit. For results the laboratory reports as falling between the method detection level and the quantitation limit (i.e. a confirmed detection, but below the level that can be reliably quantified), the Permittee shall use a value halfway between zero and the quantitation limit. [Minn. R. 7090]
5.12.166	Benchmark Values Exceeded. [Minn. R. 7090]
5.12.167	An exceedance of an applicable benchmark value for CBOD ₅ , COD, ammonia-nitrogen and TSS does not constitute a violation under this permit. However, the Permittee is required to perform any necessary corrective action(s) to address stormwater control measures, including the maintenance or implementation of BMPs, when an exceedance of an applicable benchmark value occurs. Failure to respond to benchmark value exceedances is a violation of the permit. [Minn. R. 7090]
5.12.168	The Permittee shall complete the following steps if benchmark monitoring values are exceeded: A. Collect at least one sample in the following quarter at the benchmark monitoring location(s) where exceedance(s) have occurred; B. Modify the SWPPP and document all corrective actions necessary to meet the applicable benchmark values, including improvements to BMPs; C. Initiate modifications and upgrade the SWPPP and BMPs immediately, but no later than 14 days beyond discovery of a benchmark value exceedance; and D. Install a new or repair an existing control measure to make it operational as soon as possible. i. If the Permittee is unable to complete the installation or repair within 14 calendar days, the Permittee shall document why it is infeasible within the 14-day timeframe. ii. Identify a schedule for completing the work, and document as soon as practicable after the 14-day timeframe but no longer than 45 days after discovery. Include all documentation within or as an attachment to the SWPPP. [Minn. R. 7090]
5.12.169	If any single sampling event results in a parameter meeting or exceeding the applicable benchmark value by four times or greater, it is considered an exceedance of the benchmark value and the steps required after a benchmark value exceedance are required. [Minn. R. 7090]
5.12.170	Records. [Minn. R. 7090]
5.12.171	The SWPPP shall be retained for the duration of the permit. A copy of the SWPPP shall remain on the permitted site whenever Permittee staff is on the site and be available upon request. The Permittee shall maintain the following records for the period of permit coverage: A. Dates and findings of inspections; B. Completed corrective actions; C. Documentation of all changes to the SWPPP; and D. A copy of all annual reports. [Minn. R. 7090]
5.12.172	Additional Requirements for Discharges to Impaired and Special (Prohibited, Restricted, Other) Waters. [Minn. R. 7050]
5.12.173	Specific Requirements for Industrial Facility Discharges Regulated Under Minn. R. 7050.0210, Non-degradation For Impaired Waters. [Minn. R. 7050]
5.12.174	This permit authorizes stormwater discharges associated with industrial activity regulated under this permit provided the Permittee complies with all terms and conditions of this permit, and all terms and conditions of the additional requirements for discharges to impaired waters listed in this section. [Minn. R. 7050]

5.12.175	The Permittee shall develop and implement stormwater control measures, including BMPs, that restrict the facility's industrial stormwater discharges, to the extent possible, to ensure the facility's stormwater is not causing pollution to negatively affect the water quality of the impaired water. [Minn. R. 7050]
5.12.176	If a facility is within one mile of and discharges to a water impaired for total suspended solids (TSS) or a surrogate for TSS, and TSS is listed as a required benchmark monitoring parameter in the Limits and Monitoring section then: A benchmark monitoring value of 65 mg/L for TSS applies to the discharge at the benchmark monitoring location, instead of 100 mg/L. [Minn. R. 7050]
5.12.177	Additional Required BMPs. [Minn. R. 7050]
5.12.178	If the Permittee cannot certify a condition of No Exposure, the Permittee shall comply with the appropriate requirements below. [Minn. R. 7050]
5.12.179	<p>BMP 1</p> <p>The Permittee shall develop and implement stormwater control measures, including BMPs that restrict the facility industrial stormwater discharges to the extent necessary to preserve the existing high quality, or to preserve the wilderness, scientific, recreational, or other special characteristics that make the water an Outstanding Resource Value Water.</p> <p>If TSS is listed as a required benchmark monitoring parameter, a benchmark value of 65 mg/L for TSS applies to the discharge at a benchmark monitoring location, instead of 100 mg/L.</p> <p>The SWPPP must contain the following components:</p> <p>A. A selection of industrial stormwater volume reduction and/or pollutant concentration reduction BMPs, designed to restrict industrial stormwater discharges to the designated water. The SWPPP must include necessary calculations to demonstrate the effectiveness of the chosen BMPs in reducing volume and/or pollutant concentrations; and</p> <p>B. A narrative discussion describing how the Permittee will monitor and maintain the BMPs the Permittee uses long-term, to ensure the industrial facility will sustain restricted industrial stormwater discharges. [Minn. R. 7050]</p>
5.12.180	Reporting. [Minn. R. 7090]
5.12.181	The Permittee shall submit a Stormwater Annual Report: Due annually, by the 31st of March of each year following permit issuance. The Permittee shall submit the Annual Report through the MPCA e-Services online portal. [Minn. R. 7090]
5.12.182	<p>The Annual Report must cover those portions of the previous calendar year the Permittee had authorization to discharge industrial stormwater. The Annual Report must include, at a minimum, the following information:</p> <p>A. A summary of inspection dates, findings, and any BMP maintenance the Permittee conducted during the course of the reporting year;</p> <p>B. The results of any inspection requirements involving oil and grease, if applicable;</p> <p>C. A confirmation that the SWPPP accurately reflects facility conditions;</p> <p>D. A confirmation that newly-exposed significant materials (if any) are identified and that the Permittee modifies the SWPPP to address them;</p> <p>E. A confirmation that the Permittee conducts a review of impaired waters and special waters;</p> <p>F. A confirmation that the Permittee modified the SWPPP to address applicable permit requirements of the Stormwater Pollution Prevention Plan and Benchmark Monitoring Requirements sections of this permit, if necessary;</p> <p>G. A confirmation that the Permittee meets the review requirements of US EPA-approved TMDLs that may apply to the facility;</p> <p>H. A description of any SWPPP modification the Permittee makes in accordance with the Stormwater Pollution Prevention Plan section of this permit;</p> <p>I. A list of all spills and leaks (as pursuant to Minn. Stat. 115.061) occurring at the facility during the reporting year; and</p> <p>J. If applicable, a summary of all facility mobile industrial activities. At a minimum, the summary must</p>

	include: i. A description including SIC code and/or narrative activity; ii. Locations of the mobile industrial activity including latitude and longitude coordinates; and iii. Length of time of the mobile industrial activity occurrence(s). [Minn. R. 7090]
5.12.183	Notification. [Minn. R. 7090]
5.12.184	If the Permittee has an industrial stormwater discharge and directly discharges into a regulated Municipal Separate Storm Sewer System (MS4), the Permittee shall notify the MS4 operator that they are discharging industrial stormwater into their storm sewer system. [Minn. R. 7090]
5.12.185	Definitions. [Minn. R. 7090]
5.12.186	"Active" means that significant materials and/or industrial activities, whether temporary or permanent, are present at the facility, regardless of if staff is present at the facility. [Minn. R. 7090]
5.12.187	"Benchmark monitoring location" for purposes of the industrial stormwater permit, means the location(s) within the boundary of the facility where the Permittee will collect stormwater samples for the purpose of compliance with the benchmark monitoring requirements of this permit. [Minn. R. 7090]
5.12.188	"Best management practices" or "BMPs" means practices to prevent or reduce the pollution of waters of the state, including schedules of activities, prohibitions of practices, and other management practices, and includes treatment requirements, operating procedures, and practices to control plant site runoff, spillage or leaks, sludge, or waste disposal or drainage from raw material storage. [Minn. Stat. ch. 115.03]
5.12.189	"Class B Foam" means a stable combination of per- and poly-fluorinated surfactants (PFAS) and foaming agents used to extinguish flammable liquids, such as burning oil, gasoline, and jet fuel, and is most commonly referred to as Aqueous Film Forming Foam (AFFF). [Minn. R. 7090]
5.12.190	"Class V Injection Well" refers to any well or disposal method used to dispose of non-hazardous fluids underground. Examples of Class V Injection Wells include stormwater drainage wells, septic system leach fields, and agricultural drainage wells. [Minn. R. 7001.1020, subp. 5]
5.12.191	"Co-located industrial activities" means any industrial activities at a facility defined by the stormwater regulations at 40 C.F.R. 122.26(b)(14)(i)-(ix) and (xi), other than the primary SIC Code or narrative activity. [Minn. R. 7090]
5.12.192	"Commissioner" means the Commissioner of the Minnesota Pollution Control Agency or the Commissioner's designee. [Minn. Stat. ch. 116.36, subp. 3]
5.12.193	"Construction activity" for this permit includes construction activity as defined in 40 C.F.R. 122.26(b)(14)(x) and small construction activity as defined in 40 C.F.R. 122.26(b)(15). This includes a disturbance to the land that results in a change in the topography, existing soil cover (both vegetative and non-vegetative), or the existing soil topography that may result in accelerated stormwater runoff, leading to soil erosion and movement of sediment into surface waters or drainage systems. Construction activity may include clearing, grading, filling, and excavating. Construction activity includes the disturbance of less than one acre of total land area that is a part of a larger common plan of development or sale if the larger common plan will ultimately disturb one (1) acre or more. [40 CFR 122.25(b)]
5.12.194	"Effluent Limit" means a restriction established by rule or permit condition on quantities, discharge rates, and concentrations of pollutants that are discharged from point sources into waters of the state. [Minn. R. 7001]
5.12.195	"Effluent monitoring location" for the purposes of this permit means the location(s) within the boundary of the facility where the Permittee will collect stormwater samples for the purpose of compliance with the Limits and Monitoring section of this permit. [Minn. R. 7090]
5.12.196	"Facility" for the purposes of this section, means land that shares a common border and that has an industrial stormwater discharge as defined in 40 C.F.R. 122.26(b)(14) with the discharge having a common owner or operator. [40 CFR 122.26(b)(14)]
5.12.197	"Impaired water" means waters identified as impaired by the MPCA, and approved by the US EPA, pursuant to section 303(d) of the Clean Water Act. [CWA Sect. 303]

5.12.198	"Impervious surface" means a constructed hard surface that either prevents or retards the entry of water into the soil and causes water to run off the surface in greater quantities and at an increased rate of flow than prior to development. Examples include rooftops, sidewalks, patios, driveways, parking lots, storage areas, and concrete, asphalt, or gravel roads. [Minn. R. 7090]
5.12.199	"Inactive" means a facility or portion of a facility at which significant materials are not present and at which no industrial activities are conducted and is not an active facility, and where the inactive portion is not covered by any active permit issued by the applicable State or Federal agency. An inactive facility has no staff, no significant materials, and no industrial activities exposed to stormwater. [Minn. R. 7090]
5.12.200	"Industrial activity" means the eleven categories of industrial activity which are directly related to manufacturing, processing, or raw materials storage areas at an industrial plant, as defined in 40 C.F.R. 122.26(b)(14)(i)-(xi). [Minn. R. 7090.0080 , subp. 6]
5.12.201	"Industrial stormwater pond" means constructed detention or retention facilities for the treatment of stormwater runoff under the requirements of this permit. This includes permanent ponds, dry ponds, flow equalization ponds (followed by other BMPs), and constructed wetlands. However, natural wetlands (including types 1-8) and other natural surface water bodies are not industrial stormwater ponds, parts of ponds or pond systems, and cannot be used as BMPs for stormwater treatment unless mitigated in accordance with applicable state rules. [Minn. R. 7090]
5.12.202	"Infiltration system" means a designed and constructed Best Management Practice to which industrial stormwater runoff is diverted, collected, or conveyed for the purpose of infiltration. An infiltration system does not include the parts of the system that diverts, collects, or conveys industrial stormwater. Incidental infiltration from conveyances such as swales or ditches, including those with erosion prevention devices such as vegetation, silt fence, or fiber bails, is not an infiltration system. However, swales, ditches, or similar devices constructed with stop logs, ditch excavation for storage or other retention devices, which are for the purpose of increased infiltration, are infiltration systems. Wetlands (including types 1 through 8) and other natural surface water bodies are not infiltration systems or parts of infiltration system systems, and cannot be used as infiltration systems, unless mitigated in accordance with applicable state rules. [Minn. R. 7090]
5.12.203	"Measurable Runoff Event" means precipitation, snow melt, or other event that causes stormwater to flow at a monitoring location. [Minn. R. 7090]
5.12.204	"Monitoring location" means any Monitoring Location (including those locations that are part of a representative location) and/or any Effluent Monitoring Location. [Minn. R. 7090]
5.12.205	<p>"Municipal separate storm sewer system or MS4" means a conveyance or system of conveyances including roads with drainage systems, municipal streets, catch basins, curbs, gutters, ditches, man-made channels, or storm drains:</p> <ul style="list-style-type: none"> A. Owned or operated by a state, city, town, county, district, association, or other public body, created by or pursuant to state law, having jurisdiction over disposal of sewage, industrial wastes, storm water, or other wastes, including special districts under state law such as a sewer district, flood control district, or drainage district or similar entity, or an Indian tribe or an authorized Indian tribe organization, or a designated and approved management agency under section 208 of the federal Clean Water Act, United States Code, title 33, section 1288, that discharges into waters of the state; B. Designed or used for collecting or conveying storm water; C. That is not a combined sewer; and D. That is not part of a publicly owned treatment works as defined in Code of Federal Regulations, title 40, section 122.2. <p>Municipal separate storm sewer systems do not include separate storm sewers in very discrete areas, such as individual buildings. [Minn. R. 7090.0800, subp. 8]</p>
5.12.206	"Narrative activity" means those industrial activities as defined by 40 C.F.R. 122.26(b)(14)(i), (iv), (v), (vii), and (ix). [40 CFR 122]
5.12.207	"No exposure" means that all industrial materials or activities are protected by a storm-resistant shelter to prevent exposure to rain, snow, snowmelt, or runoff. Industrial materials or activities include, but are not limited to, material handling equipment or activities, industrial machinery, raw

		materials, intermediate products, by-products, final products, or waste products. Material handling activities include the storage, loading and unloading, transportation, or conveyance of any raw material, intermediate product, final product, or waste product. [Minn. R. 7090.0080, subp. 9]
5.12.208		"Non-stormwater discharge" means any discharge not comprised entirely of stormwater. [Minn. R. 7090]
5.12.209		"One mile" means a direct horizontal distance of one mile measured from any monitoring location to the Ordinary High-Water Level (Minn. Stat. 103G.005, subd. 14) where the stormwater discharge associated with industrial activity enters either an impaired water, or any water described in the Additional Requirements for Discharges to Special and Impaired Waters section. [Minn. R. 7090]
5.12.210		"Operator" is the person responsible for the overall operation of an industrial facility under Minn. R. 7090.3000. [Minn. R. 7090]
5.12.211		"Owner" is the person who owns an industrial facility or part of an industrial facility under Minn. R. 7090.3000. [Minn. R. 7090]
5.12.212		"Permittee" means a person or persons, firm, or governmental agency or other institution that signs the permit application submitted to the MPCA and is responsible for compliance with the terms and conditions of this permit. [Minn. R. 7090]
5.12.213		"Person" means any human being, any municipality or other governmental or political subdivision or public agency, any public or private corporation, any partnership, firm, association, or other organization, any receiver, trustee, assignee, agent, or other legal representative of any of the foregoing, or any other legal entity, but does not include the MPCA. [Minn. Stat. ch. 116.06, subp. 17]
5.12.214		"Primary standard industrial classification (SIC) code" is the SIC code associated with the industrial activity that generates the greatest revenue. If revenue data is not available, the owner/operator shall base the determination on the number of employees engaged in the industrial activity. If it is not possible to determine the primary SIC code using either of these two methods, the owner/operator shall base the determination on the SIC code with the greatest production. The industrial activity that generates the greatest revenue, employs the most personnel, or has the greatest production, is the industrial activity assigned the primary SIC code. [Minn. R. 7090]
5.12.215		"Saturated soil" means the highest seasonal elevation in the soil that is in a reduced chemical state because of soil voids being filled with water. Saturated soil is evidenced by the presence of redoximorphic features or other information upon determination by a Minnesota-licensed Professional Geoscientist or Engineer. [Minn. R. 7090]
5.12.216		"Significant materials" includes, but is not limited to: raw materials; fuels; materials such as solvents, detergents, and plastic pellets; finished materials such as metallic products; raw materials used in food processing or production; hazardous substances designated under Section 101(14) of the Comprehensive Environmental Response, Compensation, and Liability Act (CERCLA); any chemical the facility is required to report pursuant to Section 313 of the Emergency Planning and Community Right-to-Know Act (EPCRA); fertilizers; pesticides; and waste products such as ashes, slag, and sludge that have the potential to be released with stormwater discharges. When determining whether a material is significant, the physical and chemical characteristics of the material should be considered (e.g. the material's solubility, transportability, and toxicity characteristics) to determine the material's pollution potential. [40 CFR 122.26(b)(12)]
5.12.217		"Storm-resistant shelter" means completely roofed and walled buildings or structures, as well as structures with only a top cover but no side coverings, and the material under the structure is not subjected to any run-on and subsequent runoff of stormwater. [Minn. R. 7090]
5.12.218		"Stormwater" means stormwater runoff, snowmelt runoff, and surface runoff and drainage. [Minn. R. 7090.0080 , subp. 12]
5.12.219		"Stormwater discharge associated with industrial activity" or "industrial stormwater discharge" means the discharge from any conveyance that is used for collecting and conveying stormwater and that is directly related to manufacturing, processing, or raw materials storage areas at an industrial plant. The term does not include discharges from facilities or activities excluded from the NPDES program under 40 C.F.R. pt. 122. For the categories of industries identified in this section, the term includes, but is not limited to, stormwater discharges from: A. Industrial plant yards;

	<p>B. Immediate access roads and rail lines used or traveled by carriers of raw materials, manufactured products, waste material, or by-products used or created by the facility;</p> <p>C. Material handling sites;</p> <p>D. Refuse sites;</p> <p>E. Sites used for the application or disposal of process wastewater (as defined at part 401 of this chapter);</p> <p>F. Sites used for the storage and maintenance of material handling equipment;</p> <p>G. Sites used for residual treatment, storage, or disposal;</p> <p>H. Shipping and receiving areas;</p> <p>I. Manufacturing buildings;</p> <p>J. Storage areas (including tank farms) for raw materials, and intermediate and final products; and</p> <p>K. Areas where industrial activity has taken place in the past and significant materials remain and are exposed to stormwater.</p> <p>For the purposes of this paragraph, material handling activities include storage, loading and unloading, transportation, or conveyance of any raw material, intermediate product, final product, by-product or waste product. The term excludes areas located on plant lands separate from the plant's industrial activities, such as office buildings and accompanying parking lots as long as the drainage from the excluded areas is not mixed with stormwater drained from the above-described areas. Industrial facilities include those that are federally, State, or municipally owned or operated that meet the description of the facilities listed in 40 C.F.R. 122.26 (b)(14)(i) through (xi), except (x). The term also includes those facilities designated under the provisions of 40 C.F.R. 122.26 (a)(1)(v). [40 CFR 122, Minn. R. 7090]</p>
5.12.220	"Stormwater pollution prevention plan" or "SWPPP" means a plan for stormwater discharge that includes facility-specific activities and actions to, first, identify sources of pollution or contamination at the facility, and second, select and implement BMPs to reduce or eliminate contact of stormwater with significant materials that may result in polluted runoff from the facility. [40 CFR 122.26]
5.12.221	"Control Measure or Stormwater Control Measure" means any stormwater control or other method (including numeric or narrative effluent limitations) used to prevent or reduce the discharge of pollutants to waters of the United States. [Minn. R. 7090]
5.12.222	"Surface water or waters" means all streams, lakes, ponds, marshes, wetlands, reservoirs, springs, rivers, drainage systems, waterways, watercourses, and irrigation systems whether natural or artificial, public, or private. [Minn. R. 7090]
5.12.223	"Total maximum daily load" or "TMDL" means the sum of the individual wasteload allocations for point sources and load allocations for nonpoint sources and natural background, as more fully defined in Code of Federal Regulations, title 40, section 130.2, paragraph (i). A TMDL sets and allocates the maximum amount of a pollutant that may be introduced into a water of the state and still assure attainment and maintenance of water quality standards. [Minn. R. 7052.0010, subp. 42]
5.12.224	"Waters of the state" means all streams, lakes, ponds, marshes, watercourses, waterways, wells, springs, reservoirs, aquifers, irrigation systems, drainage systems and all other bodies or accumulations of water, surface or underground, natural or artificial, public or private, which are contained within, flow through, or border upon the state or any portion thereof. [Minn. Stat. ch. 115.01, subp. 22]
5.12.225	"Water quality standards" means those provisions contained in Minn. R. 7050 and 7052. [Minn. R. 7050, Minn. R. 7052]
5.12.226	"Wetlands" are those areas that are inundated or saturated by surface water or groundwater at a frequency and duration sufficient to support, and that under normal circumstances do support, a prevalence of vegetation typically adapted for life in saturated soil conditions. Wetlands generally include swamps, marshes, bogs, and similar areas. Constructed wetlands designed for wastewater treatment are not waters of the state. Wetlands shall have the following attributes: A. A predominance of hydric soils; B. Inundated or saturated by surface water or groundwater at a frequency and duration sufficient to support a prevalence of hydrophytic vegetation typically adapted for life in a saturated soil condition; and

	C. Under normal circumstances support a prevalence of such vegetation. [Minn. R. 7050.0186, subp. 1B]
5.12.227	Sector-Specific Definitions. [Minn. R. 7090]
5.12.228	"Airport Authority" means a single management organization of the airport (usually a public entity). [Minn. R. 7090]
5.12.229	"Deicing" means both deicing (removing frost, snow, or ice) and anti-icing (preventing accumulation of frost, snow, or ice) activities, unless the Permittee chooses to specifically mention anti-icing or deicing activities. [Minn. R. 7090]
5.12.230	"Deicing Season" means the average seasonal timeframe (e.g. December- February, October - March, etc.) during which deicing activities occur at the facility. The Permittee shall identify the average deicing season length in the facility's SWPPP. [Minn. R. 7090]
5.12.231	"Primary Airport" means, as described in 49 USC 47102, a commercial service airport the Secretary determines to have more than 10,000 passenger boardings each year. [Minn. R. 7090]
5.12.232	"Tenant" means airline carriers, fixed-base operators (e.g. fueling companies and maintenance shops), and others that have leases/agreements to conduct business on airport property. Tenants of the airport that conduct industrial activities as described above, or as described anywhere in 40 C.F.R. 122.26(b)(14), are required to apply for authorization under an NPDES/SDS stormwater permit. [Minn. R. 7090]
	Total Facility Requirements (NPDES/SDS)
5.13.233	Definitions. Refer to the Permit User's Manual found on the MPCA's website at https://www.pca.state.mn.us/sites/default/files/wq-wwtp7-09.pdf for standard definitions. [Minn. R. 7001]
5.13.234	Incorporation by Reference. This permit incorporates the following applicable federal and state laws as enforceable parts of this permit: 40 CFR pts. 122.41, 122.42, 136, 403 and 503; Minn. R. chs. 7001, 7041, 7045, 7050, 7052, 7053, 7060, and 7080; and Minn. Stat. chs. 115 and 116. [Minn. R. 7001]
5.13.235	Permittee Responsibility. The Permittee shall perform the actions or conduct the activities authorized by this permit in compliance with the conditions of the permit and, if required, in accordance with the plans and specifications approved by the MPCA. [Minn. R. 7001.0150, subp. 3(E)]
5.13.236	Toxic Discharges Prohibited. Whether or not this permit includes effluent limitations for toxic pollutants, the Permittee shall not discharge a toxic pollutant except according to 40 CFR pts. 400 to 460; Minn. R. chs. 7050, 7052, and 7053; and any other applicable MPCA rules. [Minn. R. 7001.1090, subp. 1(A)]
5.13.237	Nuisance Conditions Prohibited. The Permittee's discharge shall not cause any nuisance conditions including, but not limited to: floating solids, scum and visible oil film, excessive suspended solids, material discoloration, obnoxious odors, gas ebullition, deleterious sludge deposits, undesirable slimes or fungus growths, aquatic habitat degradation, excessive growths of aquatic plants, acutely toxic conditions to aquatic life, or other adverse impact on the receiving water. The discharge shall not cause a material discoloration in the receiving water. Any discharge that results in a discernable change to the existing/ambient color of the receiving water constitutes material discoloration. [Minn. R. 7050.0210, subp. 2]
5.13.238	Property Rights. This permit does not convey a property right or an exclusive privilege. [Minn. R. 7001.0150, subp. 3(C)]
5.13.239	Liability Exemption. In issuing this permit, the State and the MPCA assume no responsibility for damage to persons, property, or the environment caused by the activities of the Permittee in the conduct of its actions, including those activities authorized, directed, or undertaken under this permit. To the extent the State and the MPCA may be liable for the activities of its employees, that liability is explicitly limited to that provided in the Tort Claims Act. [Minn. R. 7001.0150, subp. 3(O)]
5.13.240	The MPCA's issuance of this permit does not obligate the MPCA to enforce local laws, rules, or plans beyond what Minnesota statutes authorize. [Minn. R. 7001.0150, subp. 3(D)]

5.13.241	Liabilities. The MPCA's issuance of this permit does not release the Permittee from any liability, penalty, or duty imposed by Minnesota or federal statutes or rules or local ordinances, except the obligation to obtain the permit. [Minn. R. 7001.0150, subp. 3(A)]
5.13.242	The issuance of this permit does not prevent the future adoption by the MPCA of pollution control rules, standards, or orders more stringent than those now in existence and does not prevent the enforcement of these rules, standards, or orders against the Permittee. [Minn. R. 7001.0150, subp. 3(B)]
5.13.243	Severability. The provisions of this permit are severable and, if any provisions of this permit or the application of any provision of this permit to any circumstance are held invalid, the application of such provision to other circumstances and the remainder of this permit shall not be affected thereby. [Minn. R. 7001]
5.13.244	Compliance with Other Rules and Statutes. The Permittee shall comply with all applicable air quality, solid waste, and hazardous waste statutes and rules in the operation and maintenance of the facility. [Minn. R. 7001]
5.13.245	Inspection and Entry. When authorized by Minn. Stat. ch. 115.04, 115B.17, subd. 4, and 116.091, and upon presentation of proper credentials, the Permittee shall allow the MPCA, or an authorized employee or agent of the MPCA, to enter at reasonable times upon the property of the Permittee to examine and copy books, papers, records, or memoranda pertaining to the construction, modification, or operation of the facility covered by the permit or pertaining to the activity covered by the permit; and to conduct surveys and investigations, including sampling, monitoring, and other inspection equipment, pertaining to the construction, modification, or operation of the facility covered by the permit or pertaining to the activities covered by the permit. [Minn. R. 7001.0150, subp. 3(I)]
5.13.246	Control Users. The Permittee shall regulate the users of its facility to prevent the introduction of pollutants or materials that may result in the inhibition or disruption of the conveyance system, treatment facility or processes, or disposal system that would contribute to the violation of the conditions of this permit or any federal, state, or local law or regulation. [Minn. R. 7001.0150, subp. 3(F)]
5.13.247	Sampling. [Minn. R. 7001]
5.13.248	Representative Sampling. Sampling and measurements required by the permit shall be conducted as specified in the permit and shall be representative of the discharge or monitored activities. [Minn. R. 7001.0150, subp. 2(B)]
5.13.249	Additional Sampling. If the Permittee monitors more frequently than required, they shall report the results and the frequency of monitoring on their eDMR for that reporting period. [Minn. R. 7001.1090, subp. 1(E)]
5.13.250	Certified/Accredited Laboratory. A laboratory accredited by the Minnesota Department of Health [Minn. R. 4740.2010 through Minn. R. 4740.2120] and/or certified by the MPCA [Minn. R. 7001.4310 through Minn. R. 7001.4390] shall conduct analyses required by this permit, unless approved in writing by the MPCA. A certified/accredited laboratory does not need to complete analyses of dissolved oxygen, pH, temperature, specific conductance, and total residual oxidants (chlorine, bromine). Those analyses shall comply with 40 CFR pt. 136, including calibrations and the QA/QC section. Dissolved oxygen, pH, and total residual oxidants must be performed on-site. Follow the manufacturer's specifications for equipment maintenance and use. [Minn. R. 4740.2010-4740.2120, Minn. R. 7001.4310-7001.4390]
5.13.251	Sample Preservation and Procedure. Sample preservation and test procedures for the analysis of pollutants shall conform to 40 CFR pt. 136, including calibrations, the QA/QC section, and Minn. R. 7041.3200. Note - Table II of 40 CFR pt. 136.3 contains the requisite sample container, preservation (including, but not limited to thermal and pH adjustment), and holding times. [Minn. R. 7001.0150, subp. 2(B), Minn. R. 7041.3200]
5.13.252	Equipment Calibration. The Permittee shall check and/or calibrate flow meters, pumps, flumes, lift stations, or other flow monitoring equipment used for purposes of determining compliance (within plus or minus ten percent of the true flow values) with permit requirements at least twice annually. [Minn. R. 7001.0150, subp. 2(B & C)]

5.13.253	<p>Maintain Records. The Permittee shall keep the records required by this permit for at least three years, including any calculations, original recordings from automatic monitoring instruments, and laboratory sheets. The Permittee shall extend these record retention periods upon request of the MPCA. The Permittee shall maintain records for each sample and measurement. The records shall include the following information:</p> <ul style="list-style-type: none">A. The exact place, date, and time of the sample or measurement;B. The date and time of analysis;C. The name of the person who performed the sample collection, measurement, analysis, or calculation;D. The analytical techniques, procedures, and methods used; andE. The results of the analysis. [Minn. R. 7001.0150, subp. 2(C)]
5.13.254	<p>Completing Reports. The Permittee shall submit the results of the required sampling and monitoring activities on the forms provided, specified, or approved by the MPCA or as stipulated elsewhere in this permit. The Permittee shall record the information in the specified areas on those forms and in the units specified.</p> <p>Required forms may include a Sample Values Form. If required, the Permittee shall record individual values for each sample and measurement on the Sample Values Form provided by the MPCA. The Permittee shall submit the Sample Values Form with the appropriate eDMRs. The Permittee may design and use their own Sample Values Form after MPCA review and approval.</p> <p>Note: The Permittee shall also record required summary information on their eDMR. Permittee submitted summary information contained only on the Sample Values Form does not comply with reporting requirements. [Minn. R. 7001.0150, subp. 2(B), Minn. R. 7001.1090, subp. 1(D)]</p>
5.13.255	<p>Submitting Reports. The Permittee shall submit eDMRs, Sample Values Forms, and other supplemental attachment forms via MPCA e-Services after the MPCA approves their authorization request.</p> <p>The Permittee shall electronically submit eDMRs, Sample Values Forms, and other supplemental attachment forms by the 21st day of the month following the sampling period or otherwise as specified in this permit. The Permittee shall complete eDMR submittal on or before 11:59 p.m. of the 21st day of the month following the sampling period or as otherwise specified in this permit. The Permittee shall submit an eDMR for each required station even if no discharge occurred during the reporting period.</p> <p>The Permittee shall submit other reports required by this permit electronically. The Permittee shall submit reports by the date specified in this permit. The Permittee shall submit reports on or before 11:59 p.m. on the date specified in this permit.</p> <p>Electronically: wq.submittals.mPCA@state.mn.us Include water quality submittals form: www.pca.state.mn.us/sites/default/files/wq-wwprm7-71.docx. [Minn. R. 7001.0150, subp. 2(B), Minn. R. 7001.0150, subp. 3(H)]</p>
5.13.256	<p>Incomplete or Incorrect Reports. The Permittee shall immediately submit an electronically amended report or eDMR to the MPCA upon discovery by the Permittee or notification by the MPCA that it has submitted an incomplete or incorrect report or eDMR. The amended report or eDMR shall contain the missing or corrected data along with a comment on the eDMR explaining the circumstances of the incomplete or incorrect report. If it is impossible to amend the report or eDMR electronically, the Permittee shall immediately notify the MPCA and the MPCA will provide direction for the amendment submittals. [Minn. R. 7001.0150, subp. 3(G)]</p>
5.13.257	<p>Required Signatures. The Permittee or the duly authorized representative of the Permittee shall sign all eDMRs, forms, reports, and other documents submitted to the MPCA per Minn. R. 7001.0150, subp. 2(D). The person or persons who sign the eDMRs, forms, reports, or other documents shall certify that he or she understands and complies with the certification requirements of Minn. R. chs.</p>

	7001.0070 and 7001.0540, including the penalties for submitting false information. A registered professional engineer shall certify technical documents, such as design drawings and specifications, and engineering studies submitted as part of a permit application or by permit conditions. [Minn. R. 7001.0540]
5.13.258	<p>Reporting Limit (RL). The Permittee shall report monitoring results below the RL of a particular instrument as "<" the value of the RL. For example, if an instrument has a RL of 0.1 mg/L and a parameter is not detected at a value of 0.1 mg/L or greater, the Permittee shall report the concentration as "< 0.1 mg/L." The Permittee shall not use "non-detected," "undetected," "below detection limit," or "zero" when reporting results. The MPCA considers these terms as permit reporting violations.</p> <p>Where sample values are less than the RL and the permit requires reporting of an average, the Permittee shall calculate the average as follows:</p> <p>A. If some values are less than (<) the RL, substitute zero for all non-detectable values to use in the average calculation;</p> <p>B. If all values are less than (<) the RL, calculate the average and report as < the RL average concentration; and</p> <p>C. To calculate a mass loading with a less than (<) the RL concentration, use the RL value in the calculation and then add the "<" to the product of the concentration and the volume. [Minn. R. 7001.0150, subp. 2(B)]</p>
5.13.259	Records. The Permittee shall, when requested by the MPCA, submit within a reasonable time the information and reports that are relevant to the control of pollution regarding the construction, modification, or operation of the facility covered by the permit or regarding the conduct of the activities covered by the permit. [Minn. R. 7001.0150, subp. 3(H)]
5.13.260	Confidential Information. Except for data determined to be confidential according to Minn. Stat. ch. 116.075, subd. 2, all reports required by this permit are available for public inspection. The MPCA does not consider effluent data confidential. To request the MPCA maintain data as confidential, the Permittee shall follow Minn. R. 7000.1300. [Minn. R. 7000.1300]
5.13.261	Noncompliance and Enforcement. [Minn. R. 7001]
5.13.262	Subject to Enforcement Action and Penalties. Noncompliance with a term or condition of this permit subjects the Permittee to penalties provided by federal and state law set forth in section 309 of the Clean Water Act; United States Code, title 33, section 1319, as amended; and in Minn. Stat. ch. 115.071 and 116.072, including monetary penalties, imprisonment, or both. [Minn. R. 7001.1090, subp. 1(B)]
5.13.263	Criminal Activity. The Permittee shall not knowingly make a false statement, representation, or certification in a record or other document submitted to the MPCA. A person who falsifies a report or document submitted to the MPCA, or tampers with, or knowingly renders inaccurate a monitoring device or method that requires maintenance under this permit is subject to criminal and civil penalties provided by federal and state law. [Minn. R. 7001.0150, subp. 3(G), Minn. R. 7001.1090, subp. 1(G & H), Minn. Stat. ch. 609.671, subd. 1]
5.13.264	Noncompliance Defense. It shall not be a defense for the Permittee in an enforcement action that it would have been necessary to halt or reduce the permitted activity in order to maintain compliance with the conditions of this permit. [40 CFR 122.41(c)]
5.13.265	<p>Effluent Violations. If sampling by the Permittee indicates a violation of any discharge limitation specified in this permit, the Permittee shall immediately make every effort to verify the violation by collecting additional samples, if appropriate, investigate the cause of the violation, and take action to prevent future violations.</p> <p>If the Permittee discovers that noncompliance with a condition of the permit occurred and that the noncompliance could endanger human health, public drinking water supplies, or the environment, the Permittee shall within 24 hours of the discovery of the noncompliance orally notify the Commissioner and submit a written description of the noncompliance within five days of the discovery.</p>

		<p>If the Permittee discovers other noncompliance that does not explicitly endanger human health, public drinking water supplies, or the environment, the Permittee shall report the description of noncompliance within 30 days of the discovery. If no eDMR is required within 30 days, the Permittee shall submit a written report (see the Submitting Reports part of this chapter) including the description of noncompliance within 30 days of the discovery of the noncompliance. This description shall include the following information:</p> <ul style="list-style-type: none"> A. A description of the event including volume, duration, monitoring results, and receiving waters; B. The cause of the event; C. The steps taken to reduce, eliminate, and prevent reoccurrence of the event; D. The exact dates and times of the event; and E. Steps taken to reduce any adverse impact resulting from the event. <p>[Minn. R. 7001.0150, subp. 3(K)]</p>
5.13.266		<p>Upset Defense. In the event of temporary noncompliance with an applicable effluent limitation(s) resulting from an upset at the Permittee's facility due to factors beyond the control of the Permittee, the Permittee has an affirmative defense to an enforcement action brought by the MPCA as a result of the noncompliance if the Permittee demonstrates by a preponderance of competent evidence:</p> <ul style="list-style-type: none"> A. The specific cause of the upset; B. That the upset was unintentional; C. That the upset resulted from factors beyond the reasonable control of the Permittee and did not result from operational error, improperly designed treatment facilities, inadequate treatment facilities, lack of preventative maintenance, or increases in production which are beyond the design capability of the treatment facilities; D. That at the time of the upset the facility was being properly operated; E. That the Permittee properly notified the Commissioner of the upset in accordance with Minn. R. 7001.1090, subp. 1(I); and F. That the Permittee implemented the remedial measures required by Minn. R. 7001.0150, subp. 3(J). [Minn. R. 7001.1090]
5.13.267		<p>Release. [Minn. R. 7001]</p>
5.13.268		<p>Unauthorized Releases of Wastewater Prohibited. This permit prohibits overflows, discharges, spills, or other releases of wastewater or materials to the environment, whether intentional or not, except for discharges from outfalls specifically authorized by this permit. The MPCA will consider the Permittee's compliance with permit requirements, frequency of release, quantity, type, location, and other relevant factors when determining appropriate action. [Minn. Stat. ch. 115.061]</p>
5.13.269		<p>Discovery of a Release. Upon discovery of a release, the Permittee shall:</p> <ul style="list-style-type: none"> A. Take all reasonable steps to immediately end the release; B. Notify the Minnesota Department of Public Safety Duty Officer at 800-422-0798 or 651-649-5451 (metro area) immediately upon discovery of the release. In addition to the required notification to the Duty Officer, the Permittee may also contact the MPCA during business hours at 800-657-3864 or 651-296-6300 (metro area); C. Promptly after notifying the agency of a discharge, a publicly owned treatment works or a publicly or privately owned domestic sewer system owner must provide notice to the potentially impacted public and to any downstream drinking water facility that may be impacted by the discharge. Notice to the public and to any drinking water facility must be made using the most efficient communications system available to the facility owner such as in person, telephone call, radio, social media, web page, or another expedited form. In addition, signage must be posted at all impacted public use areas within the same jurisdiction or notification must be provided to the entity that has jurisdiction over any impacted public use areas. A notice under this paragraph must include the date and time of the discharge, a description of the material released, a warning of the potential public health risk, and the permittee's contact information; and D. Recover as rapidly and as thoroughly as possible all substances and materials released or immediately take other action as may be reasonably possible to minimize or abate pollution to waters of the state or potential impacts to human health caused thereby. If the Permittee cannot

	<p>immediately or completely recover the released materials or substances, the Permittee shall contact the MPCA. If directed by the MPCA, the Permittee shall consult with other local, state, or federal agencies (such as the Minnesota Department of Natural Resources and/or the Wetland Conservation Act authority) for implementation of additional clean up or remediation activities in wetland or other sensitive areas. [Minn. R. 7001.1090, Minn. Stat. ch. 115.061, subp. C]</p>
5.13.270	<p>Sampling of a Release. Upon discovery of a release, the Permittee shall:</p> <p>A. Collect representative samples of the release. The Permittee shall sample the release for permitted effluent parameters and other parameters of concern immediately following discovery of the release. The Permittee may contact the MPCA during business hours to discuss the sampling parameters and protocol. In addition, the Permittee shall collect fecal coliform bacteria samples where the Permittee determines that the release contains or may contain sewage. If the Permittee cannot immediately stop the release, the Permittee shall consult with the MPCA regarding additional sampling requirements. The Permittee shall collect samples at least, but not limited to, two times per week for as long as the release continues, or as stipulated elsewhere in this permit;</p> <p>B. The Permittee shall submit the Release Report information according to guidance found here: https://www.pca.state.mn.us/sites/default/files/wq-wwtp7-20a.docx. The Permittee shall submit the Release Report to the MPCA with the next eDMR or within 30 days, whichever is sooner. If the Permittee submits quarterly eDMRs and the next submittal is greater than 30 days, the Release Report may be submitted to the water quality submittals email address (see the Submitting Reports part of this chapter); and</p> <p>C. Submit the sampling results on the Release Report located on the MPCA's website at https://www.pca.state.mn.us/business-with-us/discharge-monitoring-reports. [Minn. R. 7001.1090]</p>
5.13.271	<p>Bypass. [Minn. R. 7001]</p>
5.13.272	<p>"Essential Maintenance" is a scheduled maintenance event that is required to ensure efficient operation of the facility. [Minn. R. 7001.1020, subp. 13]</p>
5.13.273	<p>"Effluent limitation" means a restriction established by rule or permit condition on quantities, discharge rates, and concentrations of pollutants that are discharged from point sources into waters of the state. [Minn. R. 7001.1020, subp. 13]</p>
5.13.274	<p>Anticipated Bypass. The Permittee may allow any bypass to occur that does not cause effluent limitation exceedances, but only if the bypass is for a scheduled essential maintenance event to assure efficient operation of the facility. The Permittee shall submit prior notice to the MPCA at least ten days before the date of the bypass, if possible. The notice of the need for an anticipated bypass shall include the following information:</p> <p>A. The proposed date and estimated duration of the bypass;</p> <p>B. The alternatives to bypassing; and</p> <p>C. A proposal for effluent sampling during the bypass. Any bypass wastewater shall enter waters of the state from outfalls specifically authorized by this permit. Therefore, the Permittee shall collect samples at the frequency and location identified in this permit or two times per week for as long as the bypass continues, whichever is more frequent. [Minn. R. 7001.1090, subp. 1(J)]</p>
5.13.275	<p>Any bypass that is not anticipated for a scheduled essential maintenance event is considered unanticipated and is prohibited. This permit prohibits all other bypasses.</p> <p>In the event of an unanticipated bypass, the Permittee shall:</p> <p>A. Take all reasonable steps to immediately end the bypass;</p> <p>B. Notify the Minnesota Department of Public Safety Duty Officer at 800-422-0798 or 651-649-5451 (metro area) immediately upon commencement of the bypass. In addition to the required notification to the Duty Officer, the Permittee may also contact the MPCA during business hours at 800-657-3864 or 651-296-6300 (metro area);</p> <p>C. Immediately take action as may be reasonably possible to minimize or abate pollution to waters of the state or potential impacts to human health caused thereby. If directed by the MPCA, the Permittee shall consult with other local, state, or federal agencies for implementation of abatement, clean up, or remediation activities; and</p> <p>D. The Permittee shall collect samples at the frequency and location identified in this permit or two</p>

	times per week for as long as the bypass continues, whichever is more frequent. The Permittee shall also follow the reporting requirements for effluent violations as specified in this permit. [Minn. R. 7001.1090, subp. 1(K), Minn. Stat. ch. 115.061]
5.13.276	<p>Notification of the Public. Following immediate notification to the Minnesota Department of Public Safety Duty Officer and the MPCA of any discharge event that could endanger human health, public drinking water supplies, or the environment, or a Release or Bypass, as described above, the Permittee shall promptly notify the public and any drinking water facility of the discharge.</p> <p>Notice to the public and to any drinking water facility must be made using the most efficient communications system available to the facility owner such as in person, telephone call, radio, social media, webpage, or another expedited form. In addition, signage must be posted at all impacted public use areas within the same jurisdiction or notification must be provided to the entity that has jurisdiction over any impacted public use areas. A notice under this requirement must include the date and time of the discharge, a description of the material released, a warning of the potential public health risk, and the Permittee's contact information. [Minn. Stat. ch. 115.061]</p>
5.13.277	In addition to other facts or incidents required by the permit to be reported within 24 hours, the Permittee shall report in accordance with part 7001.0150, subpart 3, item K any unanticipated bypass, or upset that causes an exceedance of an applicable effluent limitation. [Minn. R. 7001.1090, subp. 1]
5.13.278	Operation and Maintenance. [Minn. R. 7001]
5.13.279	The Permittee shall at all times properly operate and maintain the facilities, sewer system, and systems of treatment and control, and the appurtenances related to them which are installed or used by the Permittee to achieve compliance with the conditions of the permit. Proper operation and maintenance includes effective performance, adequate funding, adequate operator staffing and training, and adequate laboratory and process controls, including appropriate quality assurance procedures. The Permittee shall install and maintain appropriate backup or auxiliary facilities if they are necessary to achieve compliance with the conditions of the permit and, for all permits other than hazardous waste facility permits, if these backup or auxiliary facilities are technically and economically feasible. [Minn. R. 7001.0150, subp. 3(F)]
5.13.280	In the event of a reduction or loss of effective treatment of wastewater at the facility, the Permittee shall control production or curtail discharges to the extent necessary to maintain compliance with the terms and conditions of this permit. The Permittee shall continue this control or curtailment until they restore facility treatment processes or until the Permittee provides an alternative method of treatment. [Minn. R. 7001.1090, subp. 1(C)]
5.13.281	Solids Management. The Permittee shall properly store, transport, and manage biosolids, septage, sediments, residual solids, filter backwash, screenings, oil, grease, and other substances so that pollutants do not enter surface waters or groundwaters of the state. The Permittee shall manage solids in accordance with local, state, and federal requirements. [40 CFR 503, Minn. R. 7041]
5.13.282	Scheduled Maintenance. The Permittee shall schedule maintenance of the treatment works during non-critical water quality periods to prevent water quality degradation, except where the facility requires emergency maintenance to prevent a condition that would be detrimental to water quality or human health. [Minn. R. 7001.0150, subp. 2(B), Minn. R. 7001.0150, subp. 3(F)]
5.13.283	Control Tests. The Permittee shall conduct in-plant control tests at a frequency adequate to ensure compliance with the conditions of this permit. [Minn. R. 7001.0150, subp. 2(B), Minn. R. 7001.0150, subp. 3(F)]
5.13.284	Changes to the Facility or Permit. [Minn. R. 7001]
5.13.285	<p>Permit Modifications. Except as provided under Minn. Stat. ch. 115.07, subd. 1 and 3, no person required by statute or rule to obtain a permit may construct, install, modify, or operate the facility to be permitted, nor shall a person commence an activity for which a permit is required by statute or rule until the MPCA issues a written permit for the facility or activity.</p> <p>Permittees that propose to make changes to the facility or discharge that requires permit modification shall follow Minn. R. 7001.0190. If the Permittee cannot determine whether the</p>

	<p>proposed changes require a permit modification, the Permittee shall contact the MPCA prior to any action. The MPCA recommends that Permittees submit the application for permit modification to the MPCA at least 180 days prior to the planned change. [Minn. R. 7001.0030]</p>
5.13.286	<p>This permit does not require plans, specifications, and MPCA approval when maintenance dictates the need for installation of new equipment, provided the equipment is the same design size and has the same design intent. For instance, Permittees can replace a broken pipe, lift station pump, aerator, or blower with the same design-sized equipment without MPCA approval.</p> <p>If this permit does not expressly authorize the Permittee proposed construction, the MPCA may require a permit modification. If the proposed construction project requires an Environmental Assessment Worksheet under Minn. R. 4410, no construction shall begin until the MPCA issues a negative declaration and the Permittee receives or implements all approvals. [Minn. R. 7001.0030]</p>
5.13.287	<p>Report Changes. The Permittee shall give advance notice as soon as possible to the MPCA of any substantial changes in operational procedures, activities that may alter the nature or frequency of the discharge, and/or material factors that may affect compliance with the conditions of this permit. [Minn. R. 7001.0150, subp. 3(M)]</p>
5.13.288	<p>Chemical Additives. The Permittee shall receive prior written approval from the MPCA before increasing the use of a chemical additive authorized by this permit, or using a chemical additive not authorized by this permit, in quantities or concentrations that have the potential to change the characteristics, nature, and/or quality of the discharge.</p> <p>The Permittee shall request approval for an increase or new use of a chemical additive at least 60 days, or as soon as possible, before the proposed increase or new use. The Permittee shall include at least the following information for the proposed additive as instructed in the chemical additive approvals section on the MPCA's website at https://www.pca.state.mn.us/business-with-us/wastewater-permit-additional-guidance-and-information (under Chemical additive approvals):</p> <ul style="list-style-type: none"> A. Follow Chemical Additive Review Guidance (wq-prm2-12) and complete the Chemical Additive calculator tool (wq-wwprm2-12a.xlsm), including; B. The process for which the additive will be used; C. Safety Data Sheet (SDS) which shall include aquatic toxicity, human health, and environmental fate information for the proposed additive. The aquatic toxicity information shall include at minimum the results of: a) a 48-hour LC50 or EC50 acute study for a North American freshwater planktonic crustacean (such as Ceriodaphnia or Daphnia sp.) and b) a 96-hour LC50/EC50 acute study such as rainbow trout, bluegill, or fathead minnow or another North American freshwater aquatic species other than a planktonic crustacean; D. A complete product use and instruction label; E. The commercial and chemical names and Chemical Abstract Survey (CAS) number for all ingredients in the additive (If the SDS does not include information on chemical composition, including percentages for each ingredient totaling to 100%, the Permittee shall contact the supplier to have this information provided); and F. The proposed method of application, application frequency, and maximum rates of use. <p>Upon review of the information submitted regarding the proposed chemical additive, the MPCA may require additional information be submitted for consideration. This permit may be modified to restrict the use or discharge of a chemical additive and include additional influent and effluent monitoring requirements. Approval for the use of an additive or use of an additive not requiring formal review and approval shall not justify the exceedance of any effluent limitation nor shall it be used as a defense against pollutant levels in the discharge causing or contributing to the violation of a water quality standard, including nuisance conditions and material discoloration. [Minn. R. 7001.0170]</p>
5.13.289	<p>MPCA-Initiated Permit Modification, Suspension, or Revocation. The MPCA may modify or revoke and reissue this permit pursuant to Minn. R. 7001.0170. The MPCA may revoke without reissuance of this permit pursuant to Minn. R. 7001.0180. [Minn. R. 7001.0170, Minn. R. 7001.0180]</p>

5.13.290	<p>Total Maximum Daily Load (TMDL) Impacts. The MPCA may require facilities that discharge to an impaired surface water, watershed, or drainage basin to comply with additional permits or permit requirements. These requirements can include additional restriction or relaxation of limits and monitoring as authorized by the CWA 303(d)(4)(A) and 40 CFR ch. 122.44(l)(2)(i), necessary to ensure consistency with the assumptions and requirements of any applicable EPA approved wasteload allocations resulting from TMDL studies. [40 CFR 122.44(l)(2)(i)]</p>
5.13.291	<p>Permit Transfer. This permit is not transferable to any person without the express written approval of the MPCA after compliance with the requirements of Minn. R. 7001.0190. A person who receives permit transference shall comply with the conditions of this permit. [Minn. R. 7001.0150, subp. 3(N)]</p>
5.13.292	<p>Facility Closure or Significant Reduction in Activity. The Permittee is responsible for closure and post-closure care of the facility. The Permittee shall notify the MPCA of a significant reduction or cessation of the activities described in this permit at least 180 days before the reduction or cessation. The Permittee may submit a Facility Closure Plan to the MPCA no later than 150 days prior to the Facility Closure, and the MPCA may require submittal of a Facility Closure Plan via written notification. The Permittee may comply with the submitted Facility Closure Plan.</p> <p>The MPCA may require a permit modification or reissuance for facility closure that could result in a potential long-term water quality concern, such as the ongoing discharge of wastewater to surface or groundwater.</p> <p>The MPCA may require the Permittee to establish and maintain financial assurance to ensure performance of certain obligations under this permit, including closure, post-closure care, and remedial action at the facility. If the MPCA requires financial assurance, the MPCA shall approve the amount and type of financial assurance, and proposed modifications to previously MPCA-approved financial assurance. [Minn. Stat. ch. 116.07, subd. 4]</p>
5.13.293	<p>Permit Reissuance. If the Permittee desires to continue permit coverage beyond the date of permit expiration, the Permittee shall submit an application for permit reissuance: Due by 180 days prior to permit expiration. [Minn. R. 7001.0040]</p>
5.13.294	<p>If the Permittee does not intend to continue the activities authorized by this permit after the expiration date of this permit, the Permittee shall notify the MPCA in writing at least 180 days before permit expiration. If the Permittee has submitted a timely application for permit reissuance, the Permittee may continue to conduct the activities authorized by this permit, in compliance with the requirements of this permit, until the MPCA takes final action on the application, unless the MPCA determines any of the following:</p> <ul style="list-style-type: none"> A. The Permittee is not in substantial compliance with the requirements of this permit, or with a stipulation agreement or compliance schedule designed to bring the Permittee into compliance with this permit; B. The MPCA, as a result of an action or failure to act by the Permittee, has been unable to take final action on the application on or before the expiration date of the permit; or C. The Permittee has submitted an application with major deficiencies or has failed to properly supplement the application in a timely manner after being informed of deficiencies. <p>[Minn. R. 7001.0040, Minn. R. 7001.0160]</p>

6. Submittal action summary

SD 001	Stormwater, Non-specific Runoff	
		Facility Specific Limit and Monitoring Requirements
	6.1.1	The Permittee shall submit a monthly DMR: Due by 21 days after the end of each calendar month following permit issuance. [Minn. R. 7001.0150, Subp. 2(B)]
SD 002	Stormwater, Non-specific Runoff	
		Facility Specific Limit and Monitoring Requirements
	6.2.1	The Permittee shall submit a quarterly DMR: Due by 21 days after the end of each calendar quarter following permit issuance. [Minn. R. 7001.0150, Subp. 2(B)]
SD 003	Stormwater, Non-specific Runoff	
		Facility Specific Limit and Monitoring Requirements
	6.3.1	The Permittee shall submit a monthly DMR: Due by 21 days after the end of each calendar month following permit issuance. [Minn. R. 7001.0150, Subp. 2(B)]
SD 004	Stormwater, Non-specific Runoff	
		Facility Specific Limit and Monitoring Requirements
	6.4.1	The Permittee shall submit a monthly DMR: Due by 21 days after the end of each calendar month following permit issuance. [Minn. R. 7001.0150, Subp. 2(B)]
SD 005	Stormwater, Non-specific Runoff	
		Facility Specific Limit and Monitoring Requirements
	6.5.1	The Permittee shall submit a monthly DMR: Due by 21 days after the end of each calendar month following permit issuance. [Minn. R. 7001.0150, Subp. 2(B)]
MN0052141	US Air Force Reserve/934th Airlift Wing	
		Special Requirements
	6.6.1	The Permittee shall submit a report: Due by 21 days after the end of each calendar month following permit issuance. The Permittee shall monitor and collect data on the daily usage of all aircraft and pavement deicing fluids. This information shall be included in a report that is submitted to the MPCA with monthly eDMRs. This report shall include a summary table of total quantities and types of aircraft and pavement deicing fluids applied for the entire facility, including a breakdown of all quantities by date, specific location, number of aircraft and by drainage area. [Minn. R. 7001]

6.6.2	<p>The Permittee shall install equipment: Due by three years after permit issuance. The Permittee shall install a sample port to monitor stormwater discharges for the area of the facility located to the northeast of the military aircraft parking apron. Stormwater discharges from this area of the facility are identified as SD 005. The sampling port shall be in a location where stormwater can be monitored after hydrodynamic separator treatment and shall be installed by three years after permit issuance. The facility shall monitor stormwater discharges from either the stormwater collection basin located on MAC property, or within the final chamber of the hydrodynamic separator, post treatment, until completion of the sampling port installation. Once the sampling port has been installed, the facility shall only monitor SD 005 discharges from the sampling port location. [Minn. R. 7001]</p>
	<p>Phosphorus Management Plan</p>
6.7.3	<p>The Permittee shall submit a Phosphorus Management Plan: Due by 180 days after permit issuance. [Minn. R. 7001]</p>
	<p>Per- and Polyfluoroalkyl Substances (PFAS)</p>
6.8.4	<p>The Permittee shall complete and submit a PFAS Source Identification and Reduction Report by 180 days prior to permit expiration. The report will include a compilation of all annual PFAS Source Identification and Reduction Evaluations over the life of the permit, summaries, recommendations, and discussion of corrective actions planned for the future. The Permittee shall submit a PFAS Source Identification and Reduction Report: Due by 180 days prior to permit expiration. [Minn. R. 7001]</p>
	<p>Industrial Stormwater Sector S: Air Transportation</p>
6.9.5	<p>The Permittee shall submit a Stormwater Annual Report: Due annually, by the 31st of March of each year following permit issuance. The Permittee shall submit the Annual Report through the MPCA e-Services online portal. [Minn. R. 7090]</p>
	<p>Total Facility Requirements (NPDES/SDS)</p>
6.10.6	<p>Permit Reissuance. If the Permittee desires to continue permit coverage beyond the date of permit expiration, the Permittee shall submit an application for permit reissuance: Due by 180 days prior to permit expiration. [Minn. R. 7001.0040]</p>

7. Limits and monitoring

The Permittee shall comply with the limits and monitoring requirements as specified below.

Subject item	Parameter	Discharge limitations						Monitoring requirements			Notes	
		Quantity /Loading avg.	Quantity /Loading max.	Quantity /Loading units	Quality /Conc. min.	Quality /Conc. avg.	Quality /Conc. max.	Quality/ Conc. units	Frequency	Sample type		Effective period
SD 001 Aircraft Parking Apron	11-Chloroperfluoro-3-oxaundecanesulfonic acid (11Cl-PF3OUdS / F-53B Minor)					Monitor only. calendar quarter average	Monitor only. daily maximum	nanograms per liter	once per quarter	Grab	Mar, Jun, Sep, Dec	
SD 001 Aircraft Parking Apron	2-(N-Ethylperfluorooctanesulfonamido)acetic acid (N-EtFOSAA / NEtFOSAA / EtFOSAA)					Monitor only. calendar quarter average	Monitor only. daily maximum	nanograms per liter	once per quarter	Grab	Mar, Jun, Sep, Dec	
SD 001 Aircraft Parking Apron	2-(N-methylperfluoro-1-octanesulfonamido)-ethanol (NMeFOSE)					Monitor only. calendar quarter average	Monitor only. daily maximum	nanograms per liter	once per quarter	Grab	Mar, Jun, Sep, Dec	
SD 001 Aircraft Parking Apron	2-(N-Methylperfluorooctanesulfonamido)acetic acid (N-MeFOSAA / NMeFOSAA / MeFOSAA)					Monitor only. calendar quarter average	Monitor only. daily maximum	nanograms per liter	once per quarter	Grab	Mar, Jun, Sep, Dec	
SD 001 Aircraft Parking Apron	2-(Perfluorobutyl)-1-ethanesulfonic acid (4:2 FTS)					Monitor only. calendar quarter average	Monitor only. daily maximum	nanograms per liter	once per quarter	Grab	Mar, Jun, Sep, Dec	
SD 001 Aircraft Parking Apron	2H,2H,3H,3H-Perfluorooctanoic acid (5:3 FTCA)					Monitor only. calendar quarter average	Monitor only. daily maximum	nanograms per liter	once per quarter	Grab	Mar, Jun, Sep, Dec	

Subject item	Parameter	Discharge limitations						Monitoring requirements				Notes
		Quantity /Loading avg.	Quantity /Loading max.	Quantity /Loading units	Quality /Conc. min.	Quality /Conc. avg.	Quality /Conc. max.	Quality/ Conc. units	Frequency	Sample type	Effective period	
SD 001 Aircraft Parking Apron	3-(Perfluoroheptyl)propanoic acid (7:3 FTCA)					Monitor only. calendar quarter average	Monitor only. daily maximum	nanograms per liter	once per quarter	Grab	Mar, Jun, Sep, Dec	
SD 001 Aircraft Parking Apron	3:3 Fluorotelomer carboxylic acid (3:3 FTCA)					Monitor only. calendar quarter average	Monitor only. daily maximum	nanograms per liter	once per quarter	Grab	Mar, Jun, Sep, Dec	
SD 001 Aircraft Parking Apron	4,8-Dioxa-3H-perfluorononanoic acid (ADONA)					Monitor only. calendar quarter average	Monitor only. daily maximum	nanograms per liter	once per quarter	Grab	Mar, Jun, Sep, Dec	
SD 001 Aircraft Parking Apron	6:2 Fluorotelomer sulfonic acid (6:2 FTS)					Monitor only. calendar quarter average	Monitor only. daily maximum	nanograms per liter	once per quarter	Grab	Mar, Jun, Sep, Dec	
SD 001 Aircraft Parking Apron	8:2 Fluorotelomer sulfonic acid (8:2 FTS)					Monitor only. calendar quarter average	Monitor only. daily maximum	nanograms per liter	once per quarter	Grab	Mar, Jun, Sep, Dec	
SD 001 Aircraft Parking Apron	Benzene						4487 daily maximum	micrograms per liter	once per quarter	Grab	Mar, Jun, Sep, Dec	
SD 001 Aircraft Parking Apron	BOD, 05 Day (20 Deg C)					Monitor only. calendar month average	Monitor only. calendar month maximum	milligrams per liter	twice per month	Grab	Nov-Mar	

Subject item	Parameter	Discharge limitations						Monitoring requirements				Notes
		Quantity /Loading avg.	Quantity /Loading max.	Quantity /Loading units	Quality /Conc. min.	Quality /Conc. avg.	Quality /Conc. max.	Quality/ Conc. units	Frequency	Sample type	Effective period	
SD 001 Aircraft Parking Apron	BOD, Carbonaceous 05 Day (20 Deg C)					Monitor only. calendar quarter average		milligrams per liter	once per quarter	Grab	Mar, Jun, Sep, Dec	The benchmark value is 25 mg/L. If this value is exceeded, the Permittee shall refer to the Industrial Stormwater Sector S: Air Transportation Facilities section of this permit.
SD 001 Aircraft Parking Apron	COD (Chemical Oxygen Demand)					Monitor only. calendar quarter average		milligrams per liter	once per quarter	Grab	Mar, Jun, Sep, Dec	The benchmark value is 120 mg/L. If this value is exceeded, the Permittee shall refer to the Industrial Stormwater Sector S: Air Transportation Facilities section of this permit.
SD 001 Aircraft Parking Apron	Ethylbenzene						1859 daily maximum	micrograms per liter	once per quarter	Grab	Mar, Jun, Sep, Dec	
SD 001 Aircraft Parking Apron	Flow		Monitor only. calendar month total	million gallons		Monitor only. calendar month average	Monitor only. calendar month maximum	million gallons per day	once per day	Estimate	Jan-Dec	
SD 001 Aircraft Parking Apron	N-Ethyl-N-(2- hydroxyethyl)perfluorooct ane sulfonamide (N- EtFOSE)					Monitor only. calendar quarter average	Monitor only. daily maximum	nanograms per liter	once per quarter	Grab	Mar, Jun, Sep, Dec	
SD 001 Aircraft Parking Apron	N- Ethylperfluorooctanesulfo namide (EtFOSA / N- EtFOSA)					Monitor only. calendar quarter average	Monitor only. daily maximum	nanograms per liter	once per quarter	Grab	Mar, Jun, Sep, Dec	

Subject item	Parameter	Discharge limitations						Monitoring requirements				Notes
		Quantity /Loading avg.	Quantity /Loading max.	Quantity /Loading units	Quality /Conc. min.	Quality /Conc. avg.	Quality /Conc. max.	Quality/ Conc. units	Frequency	Sample type	Effective period	
SD 001 Aircraft Parking Apron	N-methylperfluoro-1-octanesulfonamide (MeFOSA / NMeFOSA)					Monitor only. calendar quarter average	Monitor only. daily maximum	nanograms per liter	once per quarter	Grab	Mar, Jun, Sep, Dec	
SD 001 Aircraft Parking Apron	Naphthalene						409 daily maximum	micrograms per liter	once per quarter	Grab	Mar, Jun, Sep, Dec	
SD 001 Aircraft Parking Apron	Nitrogen, Ammonia, Total (as N)					Monitor only. calendar quarter average		milligrams per liter	once per quarter	Grab	Mar, Jun, Sep, Dec	The benchmark value is 2.8 mg/L. If this value is exceeded, the Permittee shall refer to the Industrial Stormwater Sector S: Air Transportation Facilities section of this permit.
SD 001 Aircraft Parking Apron	Organics, Diesel Range as diesel, Total						2757 daily maximum	micrograms per liter	once per quarter	Grab	Mar, Jun, Sep, Dec	
SD 001 Aircraft Parking Apron	Organics, Gasoline Range as gasoline, Total						1818 daily maximum	micrograms per liter	once per quarter	Grab	Mar, Jun, Sep, Dec	
SD 001 Aircraft Parking Apron	Perfluoro(2-((6-chlorohexyl)oxy)ethanesulfonic acid) (9CI-PF3ONS / F53B Major)					Monitor only. calendar quarter average	Monitor only. daily maximum	nanograms per liter	once per quarter	Grab	Mar, Jun, Sep, Dec	

Subject item	Parameter	Discharge limitations						Monitoring requirements				Notes
		Quantity /Loading avg.	Quantity /Loading max.	Quantity /Loading units	Quality /Conc. min.	Quality /Conc. avg.	Quality /Conc. max.	Quality/ Conc. units	Frequency	Sample type	Effective period	
SD 001 Aircraft Parking Apron	Perfluoro(4-methoxybutanoic acid) (PFECA-A / PFMBA)					Monitor only. calendar quarter average	Monitor only. daily maximum	nanograms per liter	once per quarter	Grab	Mar, Jun, Sep, Dec	
SD 001 Aircraft Parking Apron	Perfluoro-2-ethoxyethanesulfonic acid (PFEESA)					Monitor only. calendar quarter average	Monitor only. daily maximum	nanograms per liter	once per quarter	Grab	Mar, Jun, Sep, Dec	
SD 001 Aircraft Parking Apron	Perfluoro-2-methyl-3-oxahexanoic acid (HFPO-DA / GenX)					Monitor only. calendar quarter average	Monitor only. daily maximum	nanograms per liter	once per quarter	Grab	Mar, Jun, Sep, Dec	
SD 001 Aircraft Parking Apron	Perfluoro-3,6-dioxaheptanoic acid (PFECA-B / NFDHA)					Monitor only. calendar quarter average	Monitor only. daily maximum	nanograms per liter	once per quarter	Grab	Mar, Jun, Sep, Dec	
SD 001 Aircraft Parking Apron	Perfluoro-3-methoxypropanoic acid (PFMPA)					Monitor only. calendar quarter average	Monitor only. daily maximum	nanograms per liter	once per quarter	Grab	Mar, Jun, Sep, Dec	
SD 001 Aircraft Parking Apron	Perfluorobutanesulfonic acid (PFBS)					Monitor only. calendar quarter average	Monitor only. daily maximum	nanograms per liter	once per quarter	Grab	Mar, Jun, Sep, Dec	

Subject item	Parameter	Discharge limitations						Monitoring requirements				Notes
		Quantity /Loading avg.	Quantity /Loading max.	Quantity /Loading units	Quality /Conc. min.	Quality /Conc. avg.	Quality /Conc. max.	Quality/ Conc. units	Frequency	Sample type	Effective period	
SD 001 Aircraft Parking Apron	Perfluorobutanoic acid (PFBA)					Monitor only. calendar quarter average	Monitor only. daily maximum	nanograms per liter	once per quarter	Grab	Mar, Jun, Sep, Dec	
SD 001 Aircraft Parking Apron	Perfluorodecanesulfonic acid (PFDS)					Monitor only. calendar quarter average	Monitor only. daily maximum	nanograms per liter	once per quarter	Grab	Mar, Jun, Sep, Dec	
SD 001 Aircraft Parking Apron	Perfluorodecanoic acid (PFDA)					Monitor only. calendar quarter average	Monitor only. daily maximum	nanograms per liter	once per quarter	Grab	Mar, Jun, Sep, Dec	
SD 001 Aircraft Parking Apron	Perfluorododecanesulfonic acid (PFDoS)					Monitor only. calendar quarter average	Monitor only. daily maximum	nanograms per liter	once per quarter	Grab	Mar, Jun, Sep, Dec	
SD 001 Aircraft Parking Apron	Perfluorododecanoic acid (PFDoA)					Monitor only. calendar quarter average	Monitor only. daily maximum	nanograms per liter	once per quarter	Grab	Mar, Jun, Sep, Dec	
SD 001 Aircraft Parking Apron	Perfluoroheptanesulfonic acid (PFHpS)					Monitor only. calendar quarter average	Monitor only. daily maximum	nanograms per liter	once per quarter	Grab	Mar, Jun, Sep, Dec	

Subject item	Parameter	Discharge limitations						Monitoring requirements				Notes
		Quantity /Loading avg.	Quantity /Loading max.	Quantity /Loading units	Quality /Conc. min.	Quality /Conc. avg.	Quality /Conc. max.	Quality/ Conc. units	Frequency	Sample type	Effective period	
SD 001 Aircraft Parking Apron	Perfluoroheptanoic acid (PFHpA)					Monitor only. calendar quarter average	Monitor only. daily maximum	nanograms per liter	once per quarter	Grab	Mar, Jun, Sep, Dec	
SD 001 Aircraft Parking Apron	Perfluorohexanesulfonic acid (PFH1S / PFHS / PFHxS)					Monitor only. calendar quarter average	Monitor only. daily maximum	nanograms per liter	once per quarter	Grab	Mar, Jun, Sep, Dec	
SD 001 Aircraft Parking Apron	Perfluorohexanoic acid (PFHxA)					Monitor only. calendar quarter average	Monitor only. daily maximum	nanograms per liter	once per quarter	Grab	Mar, Jun, Sep, Dec	
SD 001 Aircraft Parking Apron	Perfluorononanesulfonic acid (PFNS)					Monitor only. calendar quarter average	Monitor only. daily maximum	nanograms per liter	once per quarter	Grab	Mar, Jun, Sep, Dec	
SD 001 Aircraft Parking Apron	Perfluorononanoic acid (PFNA)					Monitor only. calendar quarter average	Monitor only. daily maximum	nanograms per liter	once per quarter	Grab	Mar, Jun, Sep, Dec	
SD 001 Aircraft Parking Apron	Perfluorooctanesulfonamide (PFOSA / FOSA)					Monitor only. calendar quarter average	Monitor only. daily maximum	nanograms per liter	once per quarter	Grab	Mar, Jun, Sep, Dec	

Subject item	Parameter	Discharge limitations						Monitoring requirements				Notes
		Quantity /Loading avg.	Quantity /Loading max.	Quantity /Loading units	Quality /Conc. min.	Quality /Conc. avg.	Quality /Conc. max.	Quality/ Conc. units	Frequency	Sample type	Effective period	
SD 001 Aircraft Parking Apron	Perfluorooctanesulfonic acid (PFOS)					Monitor only. calendar quarter average	Monitor only. daily maximum	nanograms per liter	once per quarter	Grab	Mar, Jun, Sep, Dec	
SD 001 Aircraft Parking Apron	Perfluorooctanoic acid (PFOA)					Monitor only. calendar quarter average	Monitor only. daily maximum	nanograms per liter	once per quarter	Grab	Mar, Jun, Sep, Dec	
SD 001 Aircraft Parking Apron	Perfluoropentanesulfonic acid (PFPeS)					Monitor only. calendar quarter average	Monitor only. daily maximum	nanograms per liter	once per quarter	Grab	Mar, Jun, Sep, Dec	
SD 001 Aircraft Parking Apron	Perfluoropentanoic acid (PFPeA)					Monitor only. calendar quarter average	Monitor only. daily maximum	nanograms per liter	once per quarter	Grab	Mar, Jun, Sep, Dec	
SD 001 Aircraft Parking Apron	Perfluorotetradecanoic acid (PFTeDA / PFTeA / PFTA)					Monitor only. calendar quarter average	Monitor only. daily maximum	nanograms per liter	once per quarter	Grab	Mar, Jun, Sep, Dec	
SD 001 Aircraft Parking Apron	Perfluorotridecanoic acid (PFTrA / PFTrDA)					Monitor only. calendar quarter average	Monitor only. daily maximum	nanograms per liter	once per quarter	Grab	Mar, Jun, Sep, Dec	

Subject item	Parameter	Discharge limitations						Monitoring requirements				Notes
		Quantity /Loading avg.	Quantity /Loading max.	Quantity /Loading units	Quality /Conc. min.	Quality /Conc. avg.	Quality /Conc. max.	Quality/ Conc. units	Frequency	Sample type	Effective period	
SD 002 Discharge to Minneapolis Storm Sewer	11-Chloroperfluoro-3-oxaundecanesulfonic acid (11Cl-PF3OUdS / F-53B Minor)					Monitor only. calendar quarter average	Monitor only. daily maximum	nanograms per liter	once per quarter	Grab	Jan-Dec	
SD 002 Discharge to Minneapolis Storm Sewer	2-(N-Ethylperfluorooctanesulfonamido)acetic acid (N-EtFOSAA / NEtFOSAA / EtFOSAA)					Monitor only. calendar quarter average	Monitor only. daily maximum	nanograms per liter	once per quarter	Grab	Jan-Dec	
SD 002 Discharge to Minneapolis Storm Sewer	2-(N-methylperfluoro-1-octanesulfonamido)-ethanol (NMeFOSE)					Monitor only. calendar quarter average	Monitor only. daily maximum	nanograms per liter	once per quarter	Grab	Jan-Dec	
SD 002 Discharge to Minneapolis Storm Sewer	2-(N-Methylperfluorooctanesulfonamido)acetic acid (N-MeFOSAA / NMeFOSAA / MeFOSAA)					Monitor only. calendar quarter average	Monitor only. daily maximum	nanograms per liter	once per quarter	Grab	Jan-Dec	
SD 002 Discharge to Minneapolis Storm Sewer	2-(Perfluorobutyl)-1-ethanesulfonic acid (4:2 FTS)					Monitor only. calendar quarter average	Monitor only. daily maximum	nanograms per liter	once per quarter	Grab	Jan-Dec	
SD 002 Discharge to Minneapolis Storm Sewer	2H,2H,3H,3H-Perfluorooctanoic acid (5:3 FTCA)					Monitor only. calendar quarter average	Monitor only. daily maximum	nanograms per liter	once per quarter	Grab	Jan-Dec	

Subject item	Parameter	Discharge limitations						Monitoring requirements				Notes
		Quantity /Loading avg.	Quantity /Loading max.	Quantity /Loading units	Quality /Conc. min.	Quality /Conc. avg.	Quality /Conc. max.	Quality/ Conc. units	Frequency	Sample type	Effective period	
SD 002 Discharge to Minneapolis Storm Sewer	3- (Perfluoroheptyl)propanoi c acid (7:3 FTCA)					Monitor only. calendar quarter average	Monitor only. daily maximum	nanograms per liter	once per quarter	Grab	Jan-Dec	
SD 002 Discharge to Minneapolis Storm Sewer	3:3 Fluorotelomer carboxylic acid (3:3 FTCA)					Monitor only. calendar quarter average	Monitor only. daily maximum	nanograms per liter	once per quarter	Grab	Jan-Dec	
SD 002 Discharge to Minneapolis Storm Sewer	4,8-Dioxa-3H- perfluorononanoic acid (ADONA)					Monitor only. calendar quarter average	Monitor only. daily maximum	nanograms per liter	once per quarter	Grab	Jan-Dec	
SD 002 Discharge to Minneapolis Storm Sewer	6:2 Fluorotelomer sulfonic acid (6:2 FTS)					Monitor only. calendar quarter average	Monitor only. daily maximum	nanograms per liter	once per quarter	Grab	Jan-Dec	
SD 002 Discharge to Minneapolis Storm Sewer	8:2 Fluorotelomer sulfonic acid (8:2 FTS)					Monitor only. calendar quarter average	Monitor only. daily maximum	nanograms per liter	once per quarter	Grab	Jan-Dec	
SD 002 Discharge to Minneapolis Storm Sewer	Benzene						4487 daily maximum	micrograms per liter	once per quarter	Grab	Jan-Dec	

Subject item	Parameter	Discharge limitations						Monitoring requirements				Notes
		Quantity /Loading avg.	Quantity /Loading max.	Quantity /Loading units	Quality /Conc. min.	Quality /Conc. avg.	Quality /Conc. max.	Quality/ Conc. units	Frequency	Sample type	Effective period	
SD 002 Discharge to Minneapolis Storm Sewer	BOD, Carbonaceous 05 Day (20 Deg C)					Monitor only. calendar quarter average		milligrams per liter	once per quarter	Grab	Jan-Dec	The benchmark value is 25 mg/L. If this value is exceeded, the Permittee shall refer to the Industrial Stormwater Sector S: Air Transportation Facilities section of this permit.
SD 002 Discharge to Minneapolis Storm Sewer	COD (Chemical Oxygen Demand)					Monitor only. calendar quarter average		milligrams per liter	once per quarter	Grab	Jan-Dec	The benchmark value is 120 mg/L. If this value is exceeded, the Permittee shall refer to the Industrial Stormwater Sector S: Air Transportation Facilities section of this permit.
SD 002 Discharge to Minneapolis Storm Sewer	Ethylbenzene						1859 daily maximum	micrograms per liter	once per quarter	Grab	Jan-Dec	
SD 002 Discharge to Minneapolis Storm Sewer	Flow		Monitor only. calendar quarter total	million gallons		Monitor only. calendar quarter average	Monitor only. calendar quarter maximum	million gallons per day	once per day	Estimate	Jan-Dec	
SD 002 Discharge to Minneapolis Storm Sewer	N-Ethyl-N-(2- hydroxyethyl)perfluorooct ane sulfonamide (N- EtFOSE)					Monitor only. calendar quarter average	Monitor only. daily maximum	nanograms per liter	once per quarter	Grab	Jan-Dec	
SD 002 Discharge to Minneapolis Storm Sewer	N- Ethylperfluorooctanesulfo namide (EtFOSA / N- EtFOSA)					Monitor only. calendar quarter average	Monitor only. daily maximum	nanograms per liter	once per quarter	Grab	Jan-Dec	

Subject item	Parameter	Discharge limitations						Monitoring requirements				Notes
		Quantity /Loading avg.	Quantity /Loading max.	Quantity /Loading units	Quality /Conc. min.	Quality /Conc. avg.	Quality /Conc. max.	Quality/ Conc. units	Frequency	Sample type	Effective period	
SD 002 Discharge to Minneapolis Storm Sewer	N-methylperfluoro-1- octanesulfonamide (MeFOSA / NMeFOSA)					Monitor only. calendar quarter average	Monitor only. daily maximum	nanograms per liter	once per quarter	Grab	Jan-Dec	
SD 002 Discharge to Minneapolis Storm Sewer	Naphthalene						409 daily maximum	micrograms per liter	once per quarter	Grab	Jan-Dec	
SD 002 Discharge to Minneapolis Storm Sewer	Nitrogen, Ammonia, Total (as N)					Monitor only. calendar quarter average		milligrams per liter	once per quarter	Grab	Jan-Dec	The benchmark value is 2.8 mg/L. If this value is exceeded, the Permittee shall refer to the Industrial Stormwater Sector S: Air Transportation Facilities section of this permit.
SD 002 Discharge to Minneapolis Storm Sewer	Organics, Diesel Range as diesel, Total						2757 daily maximum	micrograms per liter	once per quarter	Grab	Jan-Dec	
SD 002 Discharge to Minneapolis Storm Sewer	Organics, Gasoline Range as gasoline, Total						1818 daily maximum	micrograms per liter	once per quarter	Grab	Jan-Dec	
SD 002 Discharge to Minneapolis Storm Sewer	Perfluoro(2-((6- chlorohexyl)oxy)ethanesul fonic acid) (9CI-PF3ONS / F53B Major)					Monitor only. calendar quarter average	Monitor only. daily maximum	nanograms per liter	once per quarter	Grab	Jan-Dec	

Subject item	Parameter	Discharge limitations						Monitoring requirements				Notes
		Quantity /Loading avg.	Quantity /Loading max.	Quantity /Loading units	Quality /Conc. min.	Quality /Conc. avg.	Quality /Conc. max.	Quality/ Conc. units	Frequency	Sample type	Effective period	
SD 002 Discharge to Minneapolis Storm Sewer	Perfluoro(4- methoxybutanoic acid) (PFECA-A / PFMBA)					Monitor only. calendar quarter average	Monitor only. daily maximum	nanograms per liter	once per quarter	Grab	Jan-Dec	
SD 002 Discharge to Minneapolis Storm Sewer	Perfluoro-2- ethoxyethanesulfonic acid (PFEEESA)					Monitor only. calendar quarter average	Monitor only. daily maximum	nanograms per liter	once per quarter	Grab	Jan-Dec	
SD 002 Discharge to Minneapolis Storm Sewer	Perfluoro-2-methyl-3- oxahexanoic acid (HFPO- DA / GenX)					Monitor only. calendar quarter average	Monitor only. daily maximum	nanograms per liter	once per quarter	Grab	Jan-Dec	
SD 002 Discharge to Minneapolis Storm Sewer	Perfluoro-3,6- dioxahheptanoic acid (PFECA-B / NFDHA)					Monitor only. calendar quarter average	Monitor only. daily maximum	nanograms per liter	once per quarter	Grab	Jan-Dec	
SD 002 Discharge to Minneapolis Storm Sewer	Perfluoro-3- methoxypropanoic acid (PFMPA)					Monitor only. calendar quarter average	Monitor only. daily maximum	nanograms per liter	once per quarter	Grab	Jan-Dec	
SD 002 Discharge to Minneapolis Storm Sewer	Perfluorobutanesulfonic acid (PFBS)					Monitor only. calendar quarter average	Monitor only. daily maximum	nanograms per liter	once per quarter	Grab	Jan-Dec	

Subject item	Parameter	Discharge limitations						Monitoring requirements				Notes
		Quantity /Loading avg.	Quantity /Loading max.	Quantity /Loading units	Quality /Conc. min.	Quality /Conc. avg.	Quality /Conc. max.	Quality/ Conc. units	Frequency	Sample type	Effective period	
SD 002 Discharge to Minneapolis Storm Sewer	Perfluorobutanoic acid (PFBA)					Monitor only. calendar quarter average	Monitor only. daily maximum	nanograms per liter	once per quarter	Grab	Jan-Dec	
SD 002 Discharge to Minneapolis Storm Sewer	Perfluorodecanesulfonic acid (PFDS)					Monitor only. calendar quarter average	Monitor only. daily maximum	nanograms per liter	once per quarter	Grab	Jan-Dec	
SD 002 Discharge to Minneapolis Storm Sewer	Perfluorodecanoic acid (PFDA)					Monitor only. calendar quarter average	Monitor only. daily maximum	nanograms per liter	once per quarter	Grab	Jan-Dec	
SD 002 Discharge to Minneapolis Storm Sewer	Perfluorododecanesulfoni c acid (PFDoS)					Monitor only. calendar quarter average	Monitor only. daily maximum	nanograms per liter	once per quarter	Grab	Jan-Dec	
SD 002 Discharge to Minneapolis Storm Sewer	Perfluorododecanoic acid (PFDoA)					Monitor only. calendar quarter average	Monitor only. daily maximum	nanograms per liter	once per quarter	Grab	Jan-Dec	
SD 002 Discharge to Minneapolis Storm Sewer	Perfluoroheptanesulfonic acid (PFHpS)					Monitor only. calendar quarter average	Monitor only. daily maximum	nanograms per liter	once per quarter	Grab	Jan-Dec	

Subject item	Parameter	Discharge limitations						Monitoring requirements				Notes
		Quantity /Loading avg.	Quantity /Loading max.	Quantity /Loading units	Quality /Conc. min.	Quality /Conc. avg.	Quality /Conc. max.	Quality/ Conc. units	Frequency	Sample type	Effective period	
SD 002 Discharge to Minneapolis Storm Sewer	Perfluoroheptanoic acid (PFHpA)					Monitor only. calendar quarter average	Monitor only. daily maximum	nanograms per liter	once per quarter	Grab	Jan-Dec	
SD 002 Discharge to Minneapolis Storm Sewer	Perfluorohexanesulfonic acid (PFH1S / PFHS / PFHxS)					Monitor only. calendar quarter average	Monitor only. daily maximum	nanograms per liter	once per quarter	Grab	Jan-Dec	
SD 002 Discharge to Minneapolis Storm Sewer	Perfluorohexanoic acid (PFHxA)					Monitor only. calendar quarter average	Monitor only. daily maximum	nanograms per liter	once per quarter	Grab	Jan-Dec	
SD 002 Discharge to Minneapolis Storm Sewer	Perfluorononanesulfonic acid (PFNS)					Monitor only. calendar quarter average	Monitor only. daily maximum	nanograms per liter	once per quarter	Grab	Jan-Dec	
SD 002 Discharge to Minneapolis Storm Sewer	Perfluorononanoic acid (PFNA)					Monitor only. calendar quarter average	Monitor only. daily maximum	nanograms per liter	once per quarter	Grab	Jan-Dec	
SD 002 Discharge to Minneapolis Storm Sewer	Perfluorooctanesulfonamide (PFOSA / FOSA)					Monitor only. calendar quarter average	Monitor only. daily maximum	nanograms per liter	once per quarter	Grab	Jan-Dec	

Subject item	Parameter	Discharge limitations						Monitoring requirements				Notes
		Quantity /Loading avg.	Quantity /Loading max.	Quantity /Loading units	Quality /Conc. min.	Quality /Conc. avg.	Quality /Conc. max.	Quality/ Conc. units	Frequency	Sample type	Effective period	
SD 002 Discharge to Minneapolis Storm Sewer	Perfluorooctanesulfonic acid (PFOS)					Monitor only. calendar quarter average	Monitor only. daily maximum	nanograms per liter	once per quarter	Grab	Jan-Dec	
SD 002 Discharge to Minneapolis Storm Sewer	Perfluorooctanoic acid (PFOA)					Monitor only. calendar quarter average	Monitor only. daily maximum	nanograms per liter	once per quarter	Grab	Jan-Dec	
SD 002 Discharge to Minneapolis Storm Sewer	Perfluoropentanesulfonic acid (PFPeS)					Monitor only. calendar quarter average	Monitor only. daily maximum	nanograms per liter	once per quarter	Grab	Jan-Dec	
SD 002 Discharge to Minneapolis Storm Sewer	Perfluoropentanoic acid (PFPeA)					Monitor only. calendar quarter average	Monitor only. daily maximum	nanograms per liter	once per quarter	Grab	Jan-Dec	
SD 002 Discharge to Minneapolis Storm Sewer	Perfluorotetradecanoic acid (PFTeDA / PFTeA / PFTA)					Monitor only. calendar quarter average	Monitor only. daily maximum	nanograms per liter	once per quarter	Grab	Jan-Dec	
SD 002 Discharge to Minneapolis Storm Sewer	Perfluorotridecanoic acid (PFTrA / PFTrDA)					Monitor only. calendar quarter average	Monitor only. daily maximum	nanograms per liter	once per quarter	Grab	Jan-Dec	

Subject item	Parameter	Discharge limitations						Monitoring requirements				Notes
		Quantity /Loading avg.	Quantity /Loading max.	Quantity /Loading units	Quality /Conc. min.	Quality /Conc. avg.	Quality /Conc. max.	Quality/ Conc. units	Frequency	Sample type	Effective period	
SD 003 Base Area D-Secondary Containment	11-Chloroperfluoro-3-oxaundecanesulfonic acid (11Cl-PF3OUdS / F-53B Minor)					Monitor only. calendar year average	Monitor only. daily maximum	nanograms per liter	once per year	Grab	Dec	
SD 003 Base Area D-Secondary Containment	2-(N-Ethylperfluorooctanesulfonamido)acetic acid (N-EtFOSAA / NEtFOSAA / EtFOSAA)					Monitor only. calendar year average	Monitor only. daily maximum	nanograms per liter	once per year	Grab	Dec	
SD 003 Base Area D-Secondary Containment	2-(N-methylperfluoro-1-octanesulfonamido)-ethanol (NMeFOSE)					Monitor only. calendar year average	Monitor only. daily maximum	nanograms per liter	once per year	Grab	Dec	
SD 003 Base Area D-Secondary Containment	2-(N-Methylperfluorooctanesulfonamido)acetic acid (N-MeFOSAA / NMeFOSAA / MeFOSAA)					Monitor only. calendar year average	Monitor only. daily maximum	nanograms per liter	once per year	Grab	Dec	
SD 003 Base Area D-Secondary Containment	2-(Perfluorobutyl)-1-ethanesulfonic acid (4:2 FTS)					Monitor only. calendar year average	Monitor only. daily maximum	nanograms per liter	once per year	Grab	Dec	
SD 003 Base Area D-Secondary Containment	2H,2H,3H,3H-Perfluorooctanoic acid (5:3 FTCA)					Monitor only. calendar year average	Monitor only. daily maximum	nanograms per liter	once per year	Grab	Dec	

Subject item	Parameter	Discharge limitations						Monitoring requirements				Notes
		Quantity /Loading avg.	Quantity /Loading max.	Quantity /Loading units	Quality /Conc. min.	Quality /Conc. avg.	Quality /Conc. max.	Quality/ Conc. units	Frequency	Sample type	Effective period	
SD 003 Base Area D-Secondary Containment	3-(Perfluoroheptyl)propanoic acid (7:3 FTCA)					Monitor only. calendar year average	Monitor only. daily maximum	nanograms per liter	once per year	Grab	Dec	
SD 003 Base Area D-Secondary Containment	3:3 Fluorotelomer carboxylic acid (3:3 FTCA)					Monitor only. calendar year average	Monitor only. daily maximum	nanograms per liter	once per year	Grab	Dec	
SD 003 Base Area D-Secondary Containment	4,8-Dioxa-3H-perfluorononanoic acid (ADONA)					Monitor only. calendar year average	Monitor only. daily maximum	nanograms per liter	once per year	Grab	Dec	
SD 003 Base Area D-Secondary Containment	6:2 Fluorotelomer sulfonic acid (6:2 FTS)					Monitor only. calendar year average	Monitor only. daily maximum	nanograms per liter	once per year	Grab	Dec	
SD 003 Base Area D-Secondary Containment	8:2 Fluorotelomer sulfonic acid (8:2 FTS)					Monitor only. calendar year average	Monitor only. daily maximum	nanograms per liter	once per year	Grab	Dec	
SD 003 Base Area D-Secondary Containment	Benzene						4487 daily maximum	micrograms per liter	once per quarter	Grab	Mar, Jun, Sep, Dec	
SD 003 Base Area D-Secondary Containment	Ethylbenzene						1859 daily maximum	micrograms per liter	once per quarter	Grab	Mar, Jun, Sep, Dec	

Subject item	Parameter	Discharge limitations							Monitoring requirements			Notes
		Quantity /Loading avg.	Quantity /Loading max.	Quantity /Loading units	Quality /Conc. min.	Quality /Conc. avg.	Quality /Conc. max.	Quality /Conc. units	Frequency	Sample type	Effective period	
SD 003 Base Area D-Secondary Containment	Flow		Monitor only. calendar quarter total	million gallons		Monitor only. calendar quarter average	Monitor only. calendar quarter maximum	million gallons per day	once per day	Estimate	Mar, Jun, Sep, Dec	
SD 003 Base Area D-Secondary Containment	N-Ethyl-N-(2-hydroxyethyl)perfluorooctane sulfonamide (N-EtFOSE)					Monitor only. calendar year average	Monitor only. daily maximum	nanograms per liter	once per year	Grab	Dec	
SD 003 Base Area D-Secondary Containment	N-Ethylperfluorooctanesulfonamide (EtFOSA / N-EtFOSA)					Monitor only. calendar year average	Monitor only. daily maximum	nanograms per liter	once per year	Grab	Dec	
SD 003 Base Area D-Secondary Containment	N-methylperfluoro-1-octanesulfonamide (MeFOSA / NMeFOSA)					Monitor only. calendar year average	Monitor only. daily maximum	nanograms per liter	once per year	Grab	Dec	
SD 003 Base Area D-Secondary Containment	Naphthalene						409 daily maximum	micrograms per liter	once per quarter	Grab	Mar, Jun, Sep, Dec	
SD 003 Base Area D-Secondary Containment	Organics, Diesel Range as diesel, Total						2757 daily maximum	micrograms per liter	once per quarter	Grab	Mar, Jun, Sep, Dec	
SD 003 Base Area D-Secondary Containment	Organics, Gasoline Range as gasoline, Total						1818 daily maximum	micrograms per liter	once per quarter	Grab	Mar, Jun, Sep, Dec	

Subject item	Parameter	Discharge limitations						Monitoring requirements				Notes
		Quantity /Loading avg.	Quantity /Loading max.	Quantity /Loading units	Quality /Conc. min.	Quality /Conc. avg.	Quality /Conc. max.	Quality/ Conc. units	Frequency	Sample type	Effective period	
SD 003 Base Area D-Secondary Containment	Perfluoro(2-((6-chlorohexyl)oxy)ethanesulfonic acid) (9CI-PF3ONS / F53B Major)					Monitor only. calendar year average	Monitor only. daily maximum	nanograms per liter	once per year	Grab	Dec	
SD 003 Base Area D-Secondary Containment	Perfluoro(4-methoxybutanoic acid) (PFECA-A / PFMBA)					Monitor only. calendar year average	Monitor only. daily maximum	nanograms per liter	once per year	Grab	Dec	
SD 003 Base Area D-Secondary Containment	Perfluoro-2-ethoxyethanesulfonic acid (PFEEESA)					Monitor only. calendar year average	Monitor only. daily maximum	nanograms per liter	once per year	Grab	Dec	
SD 003 Base Area D-Secondary Containment	Perfluoro-2-methyl-3-oxahexanoic acid (HFPO-DA / GenX)					Monitor only. calendar year average	Monitor only. daily maximum	nanograms per liter	once per year	Grab	Dec	
SD 003 Base Area D-Secondary Containment	Perfluoro-3,6-dioxaheptanoic acid (PFECA-B / NFDHA)					Monitor only. calendar year average	Monitor only. daily maximum	nanograms per liter	once per year	Grab	Dec	
SD 003 Base Area D-Secondary Containment	Perfluoro-3-methoxypropanoic acid (PFMPA)					Monitor only. calendar year average	Monitor only. daily maximum	nanograms per liter	once per year	Grab	Dec	

Subject item	Parameter	Discharge limitations						Monitoring requirements				Notes
		Quantity /Loading avg.	Quantity /Loading max.	Quantity /Loading units	Quality /Conc. min.	Quality /Conc. avg.	Quality /Conc. max.	Quality/ Conc. units	Frequency	Sample type	Effective period	
SD 003 Base Area D-Secondary Containment	Perfluorobutanesulfonic acid (PFBS)					Monitor only. calendar year average	Monitor only. daily maximum	nanograms per liter	once per year	Grab	Dec	
SD 003 Base Area D-Secondary Containment	Perfluorobutanoic acid (PFBA)					Monitor only. calendar year average	Monitor only. daily maximum	nanograms per liter	once per year	Grab	Dec	
SD 003 Base Area D-Secondary Containment	Perfluorodecanesulfonic acid (PFDS)					Monitor only. calendar year average	Monitor only. daily maximum	nanograms per liter	once per year	Grab	Dec	
SD 003 Base Area D-Secondary Containment	Perfluorodecanoic acid (PFDA)					Monitor only. calendar year average	Monitor only. daily maximum	nanograms per liter	once per year	Grab	Dec	
SD 003 Base Area D-Secondary Containment	Perfluorododecanesulfonic acid (PFDoS)					Monitor only. calendar year average	Monitor only. daily maximum	nanograms per liter	once per year	Grab	Dec	
SD 003 Base Area D-Secondary Containment	Perfluorododecanoic acid (PFDoA)					Monitor only. calendar year average	Monitor only. daily maximum	nanograms per liter	once per year	Grab	Dec	

Subject item	Parameter	Discharge limitations						Monitoring requirements				Notes
		Quantity /Loading avg.	Quantity /Loading max.	Quantity /Loading units	Quality /Conc. min.	Quality /Conc. avg.	Quality /Conc. max.	Quality/ Conc. units	Frequency	Sample type	Effective period	
SD 003 Base Area D-Secondary Containment	Perfluoroheptanesulfonic acid (PFHpS)					Monitor only. calendar year average	Monitor only. daily maximum	nanograms per liter	once per year	Grab	Dec	
SD 003 Base Area D-Secondary Containment	Perfluoroheptanoic acid (PFHpA)					Monitor only. calendar year average	Monitor only. daily maximum	nanograms per liter	once per year	Grab	Dec	
SD 003 Base Area D-Secondary Containment	Perfluorohexanesulfonic acid (PFH1S / PFHS / PFHxS)					Monitor only. calendar year average	Monitor only. daily maximum	nanograms per liter	once per year	Grab	Dec	
SD 003 Base Area D-Secondary Containment	Perfluorohexanoic acid (PFHxA)					Monitor only. calendar year average	Monitor only. daily maximum	nanograms per liter	once per year	Grab	Dec	
SD 003 Base Area D-Secondary Containment	Perfluorononanesulfonic acid (PFNS)					Monitor only. calendar year average	Monitor only. daily maximum	nanograms per liter	once per year	Grab	Dec	
SD 003 Base Area D-Secondary Containment	Perfluorononanoic acid (PFNA)					Monitor only. calendar year average	Monitor only. daily maximum	nanograms per liter	once per year	Grab	Dec	

Subject item	Parameter	Discharge limitations						Monitoring requirements				Notes
		Quantity /Loading avg.	Quantity /Loading max.	Quantity /Loading units	Quality /Conc. min.	Quality /Conc. avg.	Quality /Conc. max.	Quality/ Conc. units	Frequency	Sample type	Effective period	
SD 003 Base Area D-Secondary Containment	Perfluorooctanesulfonamide (PFOSA / FOSA)					Monitor only. calendar year average	Monitor only. daily maximum	nanograms per liter	once per year	Grab	Dec	
SD 003 Base Area D-Secondary Containment	Perfluorooctanesulfonic acid (PFOS)					Monitor only. calendar year average	Monitor only. daily maximum	nanograms per liter	once per year	Grab	Dec	
SD 003 Base Area D-Secondary Containment	Perfluorooctanoic acid (PFOA)					Monitor only. calendar year average	Monitor only. daily maximum	nanograms per liter	once per year	Grab	Dec	
SD 003 Base Area D-Secondary Containment	Perfluoropentanesulfonic acid (PFPeS)					Monitor only. calendar year average	Monitor only. daily maximum	nanograms per liter	once per year	Grab	Dec	
SD 003 Base Area D-Secondary Containment	Perfluoropentanoic acid (PFPeA)					Monitor only. calendar year average	Monitor only. daily maximum	nanograms per liter	once per year	Grab	Dec	
SD 003 Base Area D-Secondary Containment	Perfluorotetradecanoic acid (PFTeDA / PFTeA / PFTA)					Monitor only. calendar year average	Monitor only. daily maximum	nanograms per liter	once per year	Grab	Dec	

Subject item	Parameter	Discharge limitations						Monitoring requirements				Notes
		Quantity /Loading avg.	Quantity /Loading max.	Quantity /Loading units	Quality /Conc. min.	Quality /Conc. avg.	Quality /Conc. max.	Quality/ Conc. units	Frequency	Sample type	Effective period	
SD 003 Base Area D-Secondary Containment	Perfluorotridecanoic acid (PFTTrA / PFTTrDA)					Monitor only. calendar year average	Monitor only. daily maximum	nanograms per liter	once per year	Grab	Dec	
SD 003 Base Area D-Secondary Containment	Perfluoroundecanoic acid (PFUnA)					Monitor only. calendar year average	Monitor only. daily maximum	nanograms per liter	once per year	Grab	Dec	
SD 003 Base Area D-Secondary Containment	pH				6.0 instantaneous minimum		9.0 instantaneous maximum	standard units	once per quarter	Grab	Mar, Jun, Sep, Dec	
SD 003 Base Area D-Secondary Containment	Phosphorus, Total (as P)					Monitor only. calendar quarter average		milligrams per liter	once per quarter	Grab	Mar, Jun, Sep, Dec	
SD 003 Base Area D-Secondary Containment	Toluene						1352 daily maximum	micrograms per liter	once per quarter	Grab	Mar, Jun, Sep, Dec	
SD 003 Base Area D-Secondary Containment	Xylenes, Total						1407 daily maximum	micrograms per liter	once per quarter	Grab	Mar, Jun, Sep, Dec	
SD 004 Base Area D-Perimeter	11-Chloroperfluoro-3-oxaundecanesulfonic acid (11Cl-PF3OUdS / F-53B Minor)					Monitor only. calendar year average	Monitor only. daily maximum	nanograms per liter	once per year	Grab	Dec	

Subject item	Parameter	Discharge limitations						Monitoring requirements				Notes
		Quantity /Loading avg.	Quantity /Loading max.	Quantity /Loading units	Quality /Conc. min.	Quality /Conc. avg.	Quality /Conc. max.	Quality/ Conc. units	Frequency	Sample type	Effective period	
SD 004 Base Area D-Perimeter	2-(N-Ethylperfluorooctanesulfonamido)acetic acid (N-EtFOSAA / NEtFOSAA / EtFOSAA)					Monitor only. calendar year average	Monitor only. daily maximum	nanograms per liter	once per year	Grab	Dec	
SD 004 Base Area D-Perimeter	2-(N-methylperfluoro-1-octanesulfonamido)-ethanol (NMeFOSE)					Monitor only. calendar year average	Monitor only. daily maximum	nanograms per liter	once per year	Grab	Dec	
SD 004 Base Area D-Perimeter	2-(N-Methylperfluorooctanesulfonamido)acetic acid (N-MeFOSAA / NMeFOSAA / MeFOSAA)					Monitor only. calendar year average	Monitor only. daily maximum	nanograms per liter	once per year	Grab	Dec	
SD 004 Base Area D-Perimeter	2-(Perfluorobutyl)-1-ethanesulfonic acid (4:2 FTS)					Monitor only. calendar year average	Monitor only. daily maximum	nanograms per liter	once per year	Grab	Dec	
SD 004 Base Area D-Perimeter	2H,2H,3H,3H-Perfluorooctanoic acid (5:3 FTCA)					Monitor only. calendar year average	Monitor only. daily maximum	nanograms per liter	once per year	Grab	Dec	
SD 004 Base Area D-Perimeter	3-(Perfluoroheptyl)propanoic acid (7:3 FTCA)					Monitor only. calendar year average	Monitor only. daily maximum	nanograms per liter	once per year	Grab	Dec	

Subject item	Parameter	Discharge limitations						Monitoring requirements				Notes
		Quantity /Loading avg.	Quantity /Loading max.	Quantity /Loading units	Quality /Conc. min.	Quality /Conc. avg.	Quality /Conc. max.	Quality/ Conc. units	Frequency	Sample type	Effective period	
SD 004 Base Area D-Perimeter	3:3 Fluorotelomer carboxylic acid (3:3 FTCA)					Monitor only. calendar year average	Monitor only. daily maximum	nanograms per liter	once per year	Grab	Dec	
SD 004 Base Area D-Perimeter	4,8-Dioxa-3H-perfluorononanoic acid (ADONA)					Monitor only. calendar year average	Monitor only. daily maximum	nanograms per liter	once per year	Grab	Dec	
SD 004 Base Area D-Perimeter	6:2 Fluorotelomer sulfonic acid (6:2 FTS)					Monitor only. calendar year average	Monitor only. daily maximum	nanograms per liter	once per year	Grab	Dec	
SD 004 Base Area D-Perimeter	8:2 Fluorotelomer sulfonic acid (8:2 FTS)					Monitor only. calendar year average	Monitor only. daily maximum	nanograms per liter	once per year	Grab	Dec	
SD 004 Base Area D-Perimeter	Benzene						4487 daily maximum	micrograms per liter	once per quarter	Grab	Mar, Jun, Sep, Dec	
SD 004 Base Area D-Perimeter	Ethylbenzene						1859 daily maximum	micrograms per liter	once per quarter	Grab	Mar, Jun, Sep, Dec	
SD 004 Base Area D-Perimeter	Flow		Monitor only. calendar quarter total	million gallons		Monitor only. calendar quarter average	Monitor only. calendar quarter maximum	million gallons per day	once per day	Estimate	Mar, Jun, Sep, Dec	

Subject item	Parameter	Discharge limitations						Monitoring requirements				Notes
		Quantity /Loading avg.	Quantity /Loading max.	Quantity /Loading units	Quality /Conc. min.	Quality /Conc. avg.	Quality /Conc. max.	Quality/ Conc. units	Frequency	Sample type	Effective period	
SD 004 Base Area D-Perimeter	N-Ethyl-N-(2-hydroxyethyl)perfluorooctane sulfonamide (N-EtFOSE)					Monitor only. calendar year average	Monitor only. daily maximum	nanograms per liter	once per year	Grab	Dec	
SD 004 Base Area D-Perimeter	N-Ethylperfluorooctanesulfonamide (EtFOSA / N-EtFOSA)					Monitor only. calendar year average	Monitor only. daily maximum	nanograms per liter	once per year	Grab	Dec	
SD 004 Base Area D-Perimeter	N-methylperfluoro-1-octanesulfonamide (MeFOSA / NMeFOSA)					Monitor only. calendar year average	Monitor only. daily maximum	nanograms per liter	once per year	Grab	Dec	
SD 004 Base Area D-Perimeter	Naphthalene						409 daily maximum	micrograms per liter	once per quarter	Grab	Mar, Jun, Sep, Dec	
SD 004 Base Area D-Perimeter	Organics, Diesel Range as diesel, Total						2757 daily maximum	micrograms per liter	once per quarter	Grab	Mar, Jun, Sep, Dec	
SD 004 Base Area D-Perimeter	Organics, Gasoline Range as gasoline, Total						1818 daily maximum	micrograms per liter	once per quarter	Grab	Mar, Jun, Sep, Dec	
SD 004 Base Area D-Perimeter	Perfluoro(2-((6-chlorohexyl)oxy)ethanesulfonic acid) (9CI-PF3ONS / F53B Major)					Monitor only. calendar year average	Monitor only. daily maximum	nanograms per liter	once per year	Grab	Dec	
SD 004 Base Area D-Perimeter	Perfluoro(4-methoxybutanoic acid) (PFECA-A / PFMBA)					Monitor only. calendar year average	Monitor only. daily maximum	nanograms per liter	once per year	Grab	Dec	

Subject item	Parameter	Discharge limitations						Monitoring requirements				Notes
		Quantity /Loading avg.	Quantity /Loading max.	Quantity /Loading units	Quality /Conc. min.	Quality /Conc. avg.	Quality /Conc. max.	Quality/ Conc. units	Frequency	Sample type	Effective period	
SD 004 Base Area D-Perimeter	Perfluoro-2-ethoxyethanesulfonic acid (PFEESA)					Monitor only. calendar year average	Monitor only. daily maximum	nanograms per liter	once per year	Grab	Dec	
SD 004 Base Area D-Perimeter	Perfluoro-2-methyl-3-oxahexanoic acid (HFPO-DA / GenX)					Monitor only. calendar year average	Monitor only. daily maximum	nanograms per liter	once per year	Grab	Dec	
SD 004 Base Area D-Perimeter	Perfluoro-3,6-dioxaheptanoic acid (PFECA-B / NFDHA)					Monitor only. calendar year average	Monitor only. daily maximum	nanograms per liter	once per year	Grab	Dec	
SD 004 Base Area D-Perimeter	Perfluoro-3-methoxypropanoic acid (PFMPA)					Monitor only. calendar year average	Monitor only. daily maximum	nanograms per liter	once per year	Grab	Dec	
SD 004 Base Area D-Perimeter	Perfluorobutanesulfonic acid (PFBS)					Monitor only. calendar year average	Monitor only. daily maximum	nanograms per liter	once per year	Grab	Dec	
SD 004 Base Area D-Perimeter	Perfluorobutanoic acid (PFBA)					Monitor only. calendar year average	Monitor only. daily maximum	nanograms per liter	once per year	Grab	Dec	

Subject item	Parameter	Discharge limitations						Monitoring requirements			Notes	
		Quantity /Loading avg.	Quantity /Loading max.	Quantity /Loading units	Quality /Conc. min.	Quality /Conc. avg.	Quality /Conc. max.	Quality/ Conc. units	Frequency	Sample type		Effective period
SD 004 Base Area D-Perimeter	Perfluorodecanesulfonic acid (PFDS)					Monitor only. calendar year average	Monitor only. daily maximum	nanograms per liter	once per year	Grab	Dec	
SD 004 Base Area D-Perimeter	Perfluorodecanoic acid (PFDA)					Monitor only. calendar year average	Monitor only. daily maximum	nanograms per liter	once per year	Grab	Dec	
SD 004 Base Area D-Perimeter	Perfluorododecanesulfonic acid (PFDoS)					Monitor only. calendar year average	Monitor only. daily maximum	nanograms per liter	once per year	Grab	Dec	
SD 004 Base Area D-Perimeter	Perfluorododecanoic acid (PFDoA)					Monitor only. calendar year average	Monitor only. daily maximum	nanograms per liter	once per year	Grab	Dec	
SD 004 Base Area D-Perimeter	Perfluoroheptanesulfonic acid (PFHpS)					Monitor only. calendar year average	Monitor only. daily maximum	nanograms per liter	once per year	Grab	Dec	
SD 004 Base Area D-Perimeter	Perfluoroheptanoic acid (PFHpA)					Monitor only. calendar year average	Monitor only. daily maximum	nanograms per liter	once per year	Grab	Dec	

Subject item	Parameter	Discharge limitations						Monitoring requirements				Notes
		Quantity /Loading avg.	Quantity /Loading max.	Quantity /Loading units	Quality /Conc. min.	Quality /Conc. avg.	Quality /Conc. max.	Quality/ Conc. units	Frequency	Sample type	Effective period	
SD 004 Base Area D-Perimeter	Perfluorohexanesulfonic acid (PFH1S / PFHS / PFHxS)					Monitor only. calendar year average	Monitor only. daily maximum	nanograms per liter	once per year	Grab	Dec	
SD 004 Base Area D-Perimeter	Perfluorohexanoic acid (PFHxA)					Monitor only. calendar year average	Monitor only. daily maximum	nanograms per liter	once per year	Grab	Dec	
SD 004 Base Area D-Perimeter	Perfluorononanesulfonic acid (PFNS)					Monitor only. calendar year average	Monitor only. daily maximum	nanograms per liter	once per year	Grab	Dec	
SD 004 Base Area D-Perimeter	Perfluorononanoic acid (PFNA)					Monitor only. calendar year average	Monitor only. daily maximum	nanograms per liter	once per year	Grab	Dec	
SD 004 Base Area D-Perimeter	Perfluorooctanesulfonamide (PFOSA / FOSA)					Monitor only. calendar year average	Monitor only. daily maximum	nanograms per liter	once per year	Grab	Dec	
SD 004 Base Area D-Perimeter	Perfluorooctanesulfonic acid (PFOS)					Monitor only. calendar year average	Monitor only. daily maximum	nanograms per liter	once per year	Grab	Dec	

Subject item	Parameter	Discharge limitations						Monitoring requirements				Notes
		Quantity /Loading avg.	Quantity /Loading max.	Quantity /Loading units	Quality /Conc. min.	Quality /Conc. avg.	Quality /Conc. max.	Quality/ Conc. units	Frequency	Sample type	Effective period	
SD 004 Base Area D-Perimeter	Perfluorooctanoic acid (PFOA)					Monitor only. calendar year average	Monitor only. daily maximum	nanograms per liter	once per year	Grab	Dec	
SD 004 Base Area D-Perimeter	Perfluoropentanesulfonic acid (PFPeS)					Monitor only. calendar year average	Monitor only. daily maximum	nanograms per liter	once per year	Grab	Dec	
SD 004 Base Area D-Perimeter	Perfluoropentanoic acid (PFPeA)					Monitor only. calendar year average	Monitor only. daily maximum	nanograms per liter	once per year	Grab	Dec	
SD 004 Base Area D-Perimeter	Perfluorotetradecanoic acid (PFTeDA / PFTeA / PFTA)					Monitor only. calendar year average	Monitor only. daily maximum	nanograms per liter	once per year	Grab	Dec	
SD 004 Base Area D-Perimeter	Perfluorotridecanoic acid (PFTTrA / PFTTrDA)					Monitor only. calendar year average	Monitor only. daily maximum	nanograms per liter	once per year	Grab	Dec	
SD 004 Base Area D-Perimeter	Perfluoroundecanoic acid (PFUnA)					Monitor only. calendar year average	Monitor only. daily maximum	nanograms per liter	once per year	Grab	Dec	
SD 004 Base Area D-Perimeter	pH				6.0 instantaneous minimum		9.0 instantaneous maximum	standard units	once per quarter	Grab	Mar, Jun, Sep, Dec	

Subject item	Parameter	Discharge limitations						Monitoring requirements				Notes
		Quantity /Loading avg.	Quantity /Loading max.	Quantity /Loading units	Quality /Conc. min.	Quality /Conc. avg.	Quality /Conc. max.	Quality/ Conc. units	Frequency	Sample type	Effective period	
SD 004 Base Area D-Perimeter	Phosphorus, Total (as P)					Monitor only. calendar quarter average		milligrams per liter	once per quarter	Grab	Mar, Jun, Sep, Dec	
SD 004 Base Area D-Perimeter	Toluene						1352 daily maximum	micrograms per liter	once per quarter	Grab	Mar, Jun, Sep, Dec	
SD 004 Base Area D-Perimeter	Xylenes, Total						1407 daily maximum	micrograms per liter	once per quarter	Grab	Mar, Jun, Sep, Dec	
SD 005 Glycol Transfer Pad to MSP Storm Sewer	11-Chloroperfluoro-3-oxaundecanesulfonic acid (11Cl-PF3OUdS / F-53B Minor)					Monitor only. calendar quarter average	Monitor only. daily maximum	nanograms per liter	once per quarter	Grab	Mar, Jun, Sep, Dec	
SD 005 Glycol Transfer Pad to MSP Storm Sewer	2-(N-Ethylperfluorooctanesulfonamido)acetic acid (N-EtFOSAA / NEtFOSAA / EtFOSAA)					Monitor only. calendar quarter average	Monitor only. daily maximum	nanograms per liter	once per quarter	Grab	Mar, Jun, Sep, Dec	
SD 005 Glycol Transfer Pad to MSP Storm Sewer	2-(N-methylperfluoro-1-octanesulfonamido)-ethanol (NMeFOSE)					Monitor only. calendar quarter average	Monitor only. daily maximum	nanograms per liter	once per quarter	Grab	Mar, Jun, Sep, Dec	
SD 005 Glycol Transfer Pad to MSP Storm Sewer	2-(N-Methylperfluorooctanesulfonamido)acetic acid (N-MeFOSAA / NMeFOSAA / MeFOSAA)					Monitor only. calendar quarter average	Monitor only. daily maximum	nanograms per liter	once per quarter	Grab	Mar, Jun, Sep, Dec	

Subject item	Parameter	Discharge limitations						Monitoring requirements				Notes
		Quantity /Loading avg.	Quantity /Loading max.	Quantity /Loading units	Quality /Conc. min.	Quality /Conc. avg.	Quality /Conc. max.	Quality/ Conc. units	Frequency	Sample type	Effective period	
SD 005 Glycol Transfer Pad to MSP Storm Sewer	2-(Perfluorobutyl)-1-ethanesulfonic acid (4:2 FTS)					Monitor only. calendar quarter average	Monitor only. daily maximum	nanograms per liter	once per quarter	Grab	Mar, Jun, Sep, Dec	
SD 005 Glycol Transfer Pad to MSP Storm Sewer	2H,2H,3H,3H-Perfluorooctanoic acid (5:3 FTCA)					Monitor only. calendar quarter average	Monitor only. daily maximum	nanograms per liter	once per quarter	Grab	Mar, Jun, Sep, Dec	
SD 005 Glycol Transfer Pad to MSP Storm Sewer	3-(Perfluoroheptyl)propanoic acid (7:3 FTCA)					Monitor only. calendar quarter average	Monitor only. daily maximum	nanograms per liter	once per quarter	Grab	Mar, Jun, Sep, Dec	
SD 005 Glycol Transfer Pad to MSP Storm Sewer	3:3 Fluorotelomer carboxylic acid (3:3 FTCA)					Monitor only. calendar quarter average	Monitor only. daily maximum	nanograms per liter	once per quarter	Grab	Mar, Jun, Sep, Dec	
SD 005 Glycol Transfer Pad to MSP Storm Sewer	4,8-Dioxa-3H-perfluorononanoic acid (ADONA)					Monitor only. calendar quarter average	Monitor only. daily maximum	nanograms per liter	once per quarter	Grab	Mar, Jun, Sep, Dec	
SD 005 Glycol Transfer Pad to MSP Storm Sewer	6:2 Fluorotelomer sulfonic acid (6:2 FTS)					Monitor only. calendar quarter average	Monitor only. daily maximum	nanograms per liter	once per quarter	Grab	Mar, Jun, Sep, Dec	

Subject item	Parameter	Discharge limitations						Monitoring requirements				Notes
		Quantity /Loading avg.	Quantity /Loading max.	Quantity /Loading units	Quality /Conc. min.	Quality /Conc. avg.	Quality /Conc. max.	Quality/ Conc. units	Frequency	Sample type	Effective period	
SD 005 Glycol Transfer Pad to MSP Storm Sewer	8:2 Fluorotelomer sulfonic acid (8:2 FTS)					Monitor only. calendar quarter average	Monitor only. daily maximum	nanograms per liter	once per quarter	Grab	Mar, Jun, Sep, Dec	
SD 005 Glycol Transfer Pad to MSP Storm Sewer	Benzene						4487 daily maximum	micrograms per liter	once per quarter	Grab	Mar, Jun, Sep, Dec	
SD 005 Glycol Transfer Pad to MSP Storm Sewer	BOD, 05 Day (20 Deg C)					Monitor only. calendar month average	Monitor only. calendar month maximum	milligrams per liter	twice per month	Grab	Nov-Mar	
SD 005 Glycol Transfer Pad to MSP Storm Sewer	BOD, Carbonaceous 05 Day (20 Deg C)					Monitor only. calendar quarter average		milligrams per liter	once per quarter	Grab	Mar, Jun, Sep, Dec	The benchmark value is 25 mg/L. If this value is exceeded, the Permittee shall refer to the Industrial Stormwater Sector S: Air Transportation Facilities section of this permit.
SD 005 Glycol Transfer Pad to MSP Storm Sewer	COD (Chemical Oxygen Demand)					Monitor only. calendar quarter average		milligrams per liter	once per quarter	Grab	Mar, Jun, Sep, Dec	The benchmark value is 120 mg/L. If this value is exceeded, the Permittee shall refer to the Industrial Stormwater Sector S: Air Transportation Facilities section of this permit.

Subject item	Parameter	Discharge limitations						Monitoring requirements				Notes
		Quantity /Loading avg.	Quantity /Loading max.	Quantity /Loading units	Quality /Conc. min.	Quality /Conc. avg.	Quality /Conc. max.	Quality/ Conc. units	Frequency	Sample type	Effective period	
SD 005 Glycol Transfer Pad to MSP Storm Sewer	Ethylbenzene						1859 daily maximum	micrograms per liter	once per quarter	Grab	Mar, Jun, Sep, Dec	
SD 005 Glycol Transfer Pad to MSP Storm Sewer	Flow		Monitor only. calendar month total	million gallons		Monitor only. calendar month average	Monitor only. calendar month maximum	million gallons per day	once per day	Estimate	Jan-Dec	
SD 005 Glycol Transfer Pad to MSP Storm Sewer	N-Ethyl-N-(2-hydroxyethyl)perfluorooctane sulfonamide (N-EtFOSE)					Monitor only. calendar quarter average	Monitor only. daily maximum	nanograms per liter	once per quarter	Grab	Mar, Jun, Sep, Dec	
SD 005 Glycol Transfer Pad to MSP Storm Sewer	N-Ethylperfluorooctanesulfonamide (EtFOSA / N-EtFOSA)					Monitor only. calendar quarter average	Monitor only. daily maximum	nanograms per liter	once per quarter	Grab	Mar, Jun, Sep, Dec	
SD 005 Glycol Transfer Pad to MSP Storm Sewer	N-methylperfluoro-1-octanesulfonamide (MeFOSA / NMeFOSA)					Monitor only. calendar quarter average	Monitor only. daily maximum	nanograms per liter	once per quarter	Grab	Mar, Jun, Sep, Dec	
SD 005 Glycol Transfer Pad to MSP Storm Sewer	Naphthalene						409 daily maximum	micrograms per liter	once per quarter	Grab	Mar, Jun, Sep, Dec	

Subject item	Parameter	Discharge limitations						Monitoring requirements				Notes
		Quantity /Loading avg.	Quantity /Loading max.	Quantity /Loading units	Quality /Conc. min.	Quality /Conc. avg.	Quality /Conc. max.	Quality/ Conc. units	Frequency	Sample type	Effective period	
SD 005 Glycol Transfer Pad to MSP Storm Sewer	Nitrogen, Ammonia, Total (as N)					Monitor only. calendar quarter average		milligrams per liter	once per quarter	Grab	Mar, Jun, Sep, Dec	The benchmark value is 2.8 mg/L. If this value is exceeded, the Permittee shall refer to the Industrial Stormwater Sector S: Air Transportation Facilities section of this permit.
SD 005 Glycol Transfer Pad to MSP Storm Sewer	Organics, Diesel Range as diesel, Total						2757 daily maximum	micrograms per liter	once per quarter	Grab	Mar, Jun, Sep, Dec	
SD 005 Glycol Transfer Pad to MSP Storm Sewer	Organics, Gasoline Range as gasoline, Total						1818 daily maximum	micrograms per liter	once per quarter	Grab	Mar, Jun, Sep, Dec	
SD 005 Glycol Transfer Pad to MSP Storm Sewer	Perfluoro(2-((6- chlorohexyl)oxy)ethanesul fonic acid) (9CI-PF3ONS / F53B Major)					Monitor only. calendar quarter average	Monitor only. daily maximum	nanograms per liter	once per quarter	Grab	Mar, Jun, Sep, Dec	
SD 005 Glycol Transfer Pad to MSP Storm Sewer	Perfluoro(4- methoxybutanoic acid) (PFECA-A / PFMBA)					Monitor only. calendar quarter average	Monitor only. daily maximum	nanograms per liter	once per quarter	Grab	Mar, Jun, Sep, Dec	
SD 005 Glycol Transfer Pad to MSP Storm Sewer	Perfluoro-2- ethoxyethanesulfonic acid (PFEESA)					Monitor only. calendar quarter average	Monitor only. daily maximum	nanograms per liter	once per quarter	Grab	Mar, Jun, Sep, Dec	

Subject item	Parameter	Discharge limitations						Monitoring requirements				Notes
		Quantity /Loading avg.	Quantity /Loading max.	Quantity /Loading units	Quality /Conc. min.	Quality /Conc. avg.	Quality /Conc. max.	Quality/ Conc. units	Frequency	Sample type	Effective period	
SD 005 Glycol Transfer Pad to MSP Storm Sewer	Perfluoro-2-methyl-3-oxahexanoic acid (HFPO-DA / GenX)					Monitor only. calendar quarter average	Monitor only. daily maximum	nanograms per liter	once per quarter	Grab	Mar, Jun, Sep, Dec	
SD 005 Glycol Transfer Pad to MSP Storm Sewer	Perfluoro-3,6-dioxaheptanoic acid (PFECA-B / NFDHA)					Monitor only. calendar quarter average	Monitor only. daily maximum	nanograms per liter	once per quarter	Grab	Mar, Jun, Sep, Dec	
SD 005 Glycol Transfer Pad to MSP Storm Sewer	Perfluoro-3-methoxypropanoic acid (PFMPA)					Monitor only. calendar quarter average	Monitor only. daily maximum	nanograms per liter	once per quarter	Grab	Mar, Jun, Sep, Dec	
SD 005 Glycol Transfer Pad to MSP Storm Sewer	Perfluorobutanesulfonic acid (PFBS)					Monitor only. calendar quarter average	Monitor only. daily maximum	nanograms per liter	once per quarter	Grab	Mar, Jun, Sep, Dec	
SD 005 Glycol Transfer Pad to MSP Storm Sewer	Perfluorobutanoic acid (PFBA)					Monitor only. calendar quarter average	Monitor only. daily maximum	nanograms per liter	once per quarter	Grab	Mar, Jun, Sep, Dec	
SD 005 Glycol Transfer Pad to MSP Storm Sewer	Perfluorodecanesulfonic acid (PFDS)					Monitor only. calendar quarter average	Monitor only. daily maximum	nanograms per liter	once per quarter	Grab	Mar, Jun, Sep, Dec	

Subject item	Parameter	Discharge limitations						Monitoring requirements				Notes
		Quantity /Loading avg.	Quantity /Loading max.	Quantity /Loading units	Quality /Conc. min.	Quality /Conc. avg.	Quality /Conc. max.	Quality/ Conc. units	Frequency	Sample type	Effective period	
SD 005 Glycol Transfer Pad to MSP Storm Sewer	Perfluorodecanoic acid (PFDA)					Monitor only. calendar quarter average	Monitor only. daily maximum	nanograms per liter	once per quarter	Grab	Mar, Jun, Sep, Dec	
SD 005 Glycol Transfer Pad to MSP Storm Sewer	Perfluorododecanesulfonic acid (PFDoS)					Monitor only. calendar quarter average	Monitor only. daily maximum	nanograms per liter	once per quarter	Grab	Mar, Jun, Sep, Dec	
SD 005 Glycol Transfer Pad to MSP Storm Sewer	Perfluorododecanoic acid (PFDoA)					Monitor only. calendar quarter average	Monitor only. daily maximum	nanograms per liter	once per quarter	Grab	Mar, Jun, Sep, Dec	
SD 005 Glycol Transfer Pad to MSP Storm Sewer	Perfluoroheptanesulfonic acid (PFHpS)					Monitor only. calendar quarter average	Monitor only. daily maximum	nanograms per liter	once per quarter	Grab	Mar, Jun, Sep, Dec	
SD 005 Glycol Transfer Pad to MSP Storm Sewer	Perfluoroheptanoic acid (PFHpA)					Monitor only. calendar quarter average	Monitor only. daily maximum	nanograms per liter	once per quarter	Grab	Mar, Jun, Sep, Dec	
SD 005 Glycol Transfer Pad to MSP Storm Sewer	Perfluorohexanesulfonic acid (PFH1S / PFHS / PFHxS)					Monitor only. calendar quarter average	Monitor only. daily maximum	nanograms per liter	once per quarter	Grab	Mar, Jun, Sep, Dec	

Subject item	Parameter	Discharge limitations						Monitoring requirements				Notes
		Quantity /Loading avg.	Quantity /Loading max.	Quantity /Loading units	Quality /Conc. min.	Quality /Conc. avg.	Quality /Conc. max.	Quality/ Conc. units	Frequency	Sample type	Effective period	
SD 005 Glycol Transfer Pad to MSP Storm Sewer	Perfluorohexanoic acid (PFHxA)					Monitor only. calendar quarter average	Monitor only. daily maximum	nanograms per liter	once per quarter	Grab	Mar, Jun, Sep, Dec	
SD 005 Glycol Transfer Pad to MSP Storm Sewer	Perfluorononanesulfonic acid (PFNS)					Monitor only. calendar quarter average	Monitor only. daily maximum	nanograms per liter	once per quarter	Grab	Mar, Jun, Sep, Dec	
SD 005 Glycol Transfer Pad to MSP Storm Sewer	Perfluorononanoic acid (PFNA)					Monitor only. calendar quarter average	Monitor only. daily maximum	nanograms per liter	once per quarter	Grab	Mar, Jun, Sep, Dec	
SD 005 Glycol Transfer Pad to MSP Storm Sewer	Perfluorooctanesulfonamide (PFOSA / FOSA)					Monitor only. calendar quarter average	Monitor only. daily maximum	nanograms per liter	once per quarter	Grab	Mar, Jun, Sep, Dec	
SD 005 Glycol Transfer Pad to MSP Storm Sewer	Perfluorooctanesulfonic acid (PFOS)					Monitor only. calendar quarter average	Monitor only. daily maximum	nanograms per liter	once per quarter	Grab	Mar, Jun, Sep, Dec	
SD 005 Glycol Transfer Pad to MSP Storm Sewer	Perfluorooctanoic acid (PFOA)					Monitor only. calendar quarter average	Monitor only. daily maximum	nanograms per liter	once per quarter	Grab	Mar, Jun, Sep, Dec	

Subject item	Parameter	Discharge limitations						Monitoring requirements				Notes
		Quantity /Loading avg.	Quantity /Loading max.	Quantity /Loading units	Quality /Conc. min.	Quality /Conc. avg.	Quality /Conc. max.	Quality/ Conc. units	Frequency	Sample type	Effective period	
SD 005 Glycol Transfer Pad to MSP Storm Sewer	Perfluoropentanesulfonic acid (PFPeS)					Monitor only. calendar quarter average	Monitor only. daily maximum	nanograms per liter	once per quarter	Grab	Mar, Jun, Sep, Dec	
SD 005 Glycol Transfer Pad to MSP Storm Sewer	Perfluoropentanoic acid (PFPeA)					Monitor only. calendar quarter average	Monitor only. daily maximum	nanograms per liter	once per quarter	Grab	Mar, Jun, Sep, Dec	
SD 005 Glycol Transfer Pad to MSP Storm Sewer	Perfluorotetradecanoic acid (PFTeDA / PFTeA / PFTA)					Monitor only. calendar quarter average	Monitor only. daily maximum	nanograms per liter	once per quarter	Grab	Mar, Jun, Sep, Dec	
SD 005 Glycol Transfer Pad to MSP Storm Sewer	Perfluorotridecanoic acid (PFTrA / PFTrDA)					Monitor only. calendar quarter average	Monitor only. daily maximum	nanograms per liter	once per quarter	Grab	Mar, Jun, Sep, Dec	
SD 005 Glycol Transfer Pad to MSP Storm Sewer	Perfluoroundecanoic acid (PFUnA)					Monitor only. calendar quarter average	Monitor only. daily maximum	nanograms per liter	once per quarter	Grab	Mar, Jun, Sep, Dec	
SD 005 Glycol Transfer Pad to MSP Storm Sewer	pH				6.0 instantaneous minimum		9.0 instantaneous maximum	standard units	once per quarter	Grab	Mar, Jun, Sep, Dec	

Subject item	Parameter	Discharge limitations						Monitoring requirements			Notes	
		Quantity /Loading avg.	Quantity /Loading max.	Quantity /Loading units	Quality /Conc. min.	Quality /Conc. avg.	Quality /Conc. max.	Quality/ Conc. units	Frequency	Sample type		Effective period
SD 005 Glycol Transfer Pad to MSP Storm Sewer	Phosphorus, Total (as P)					Monitor only. calendar quarter average		milligrams per liter	once per quarter	Grab	Mar, Jun, Sep, Dec	
SD 005 Glycol Transfer Pad to MSP Storm Sewer	Solids, Total Suspended (TSS)					Monitor only. calendar quarter average		milligrams per liter	once per quarter	Grab	Mar, Jun, Sep, Dec	The benchmark value is 65 mg/L. If this value is exceeded, the Permittee shall refer to the Industrial Stormwater Sector S: Air Transportation Facilities section of this permit.
SD 005 Glycol Transfer Pad to MSP Storm Sewer	Toluene						1352 daily maximum	micrograms per liter	once per quarter	Grab	Mar, Jun, Sep, Dec	
SD 005 Glycol Transfer Pad to MSP Storm Sewer	Xylenes, Total						1407 daily maximum	micrograms per liter	once per quarter	Grab	Mar, Jun, Sep, Dec	

8. Chemical additives

Chemical additives currently approved for use at this facility consist of the following:

Name	Purpose	Dosage frequency	Location and maximum addition rate
Octaflo EF	Aircraft Deicing	18 days per year/avg	Aircraft Parking Apron/420 gal/day
Cryotech E36	Pavement Deicing	3 days per year/avg	Aircraft Parking Apron/2,350 gal/day
Cryotech NAAC	Pavement Deicing	3 days per year/avg	Aircraft Parking Apron/6,615 lbs/day
All Clear Lift Off P-88 Concentrate	Aircraft Deicing	1-3 times per week	Aircraft Parking Apron 50 gal/day